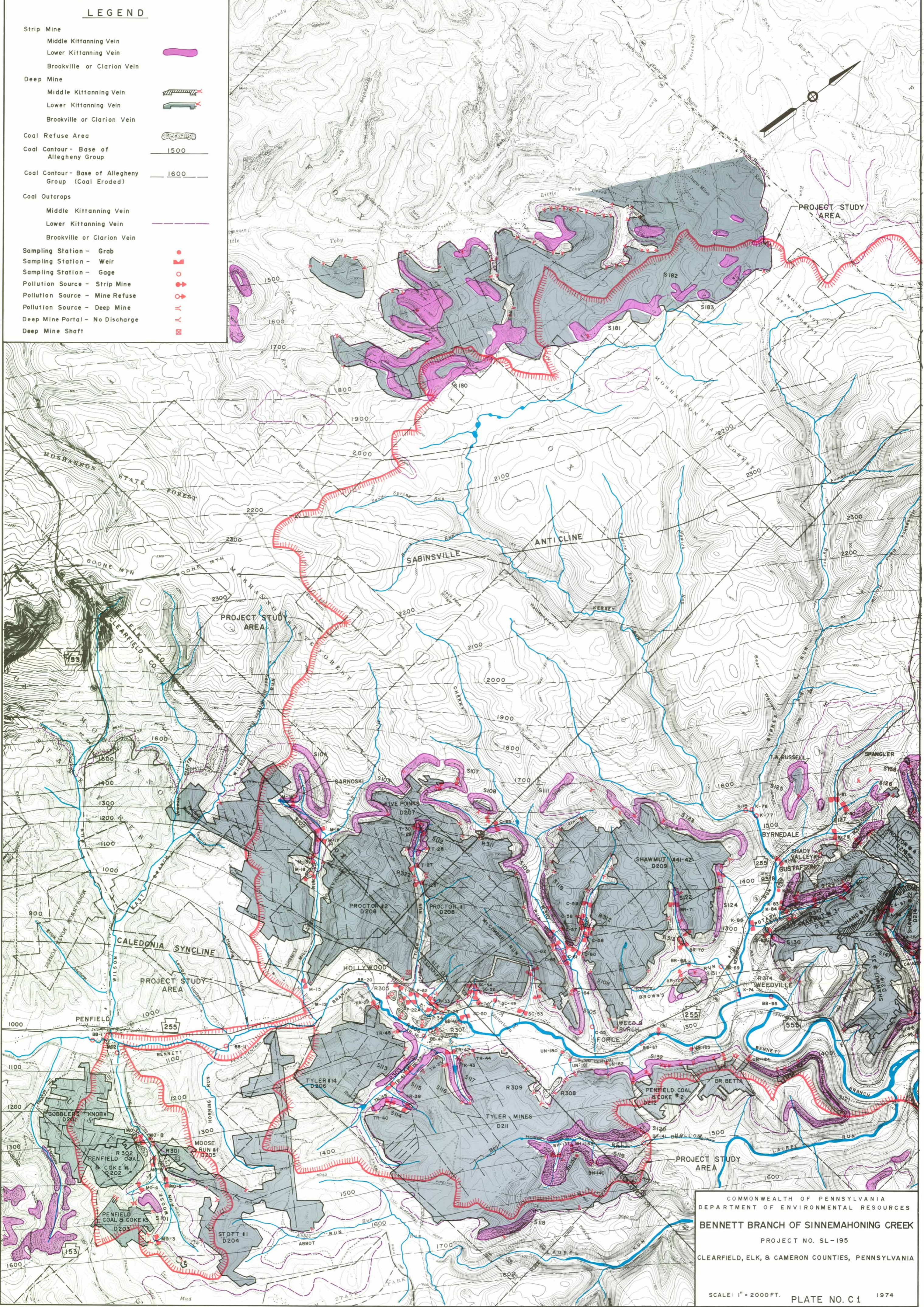


**LEGEND**

- Strip Mine
  - Middle Kittanning Vein
  - Lower Kittanning Vein
  - Brookville or Clarion Vein
- Deep Mine
  - Middle Kittanning Vein
  - Lower Kittanning Vein
  - Brookville or Clarion Vein
- Coal Refuse Area
- Coal Contour - Base of Allegheny Group
  - 1500
- Coal Contour - Base of Allegheny Group (Coal Eroded)
  - 1600
- Coal Outcrops
  - Middle Kittanning Vein
  - Lower Kittanning Vein
  - Brookville or Clarion Vein
- Sampling Station - Grab
- Sampling Station - Weir
- Sampling Station - Gage
- Pollution Source - Strip Mine
- Pollution Source - Mine Refuse
- Pollution Source - Deep Mine
- Deep Mine Portal - No Discharge
- Deep Mine Shaft



COMMONWEALTH OF PENNSYLVANIA  
 DEPARTMENT OF ENVIRONMENTAL RESOURCES  
**BENNETT BRANCH OF SINNEMAHONING CREEK**  
 PROJECT NO. SL-195  
 CLEARFIELD, ELK, & CAMERON COUNTIES, PENNSYLVANIA

SCALE: 1" = 2000 FT.    PLATE NO. C.1    1974