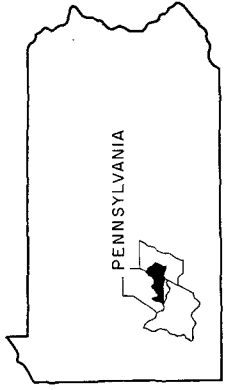


COAL MINING INVENTORY MAPS

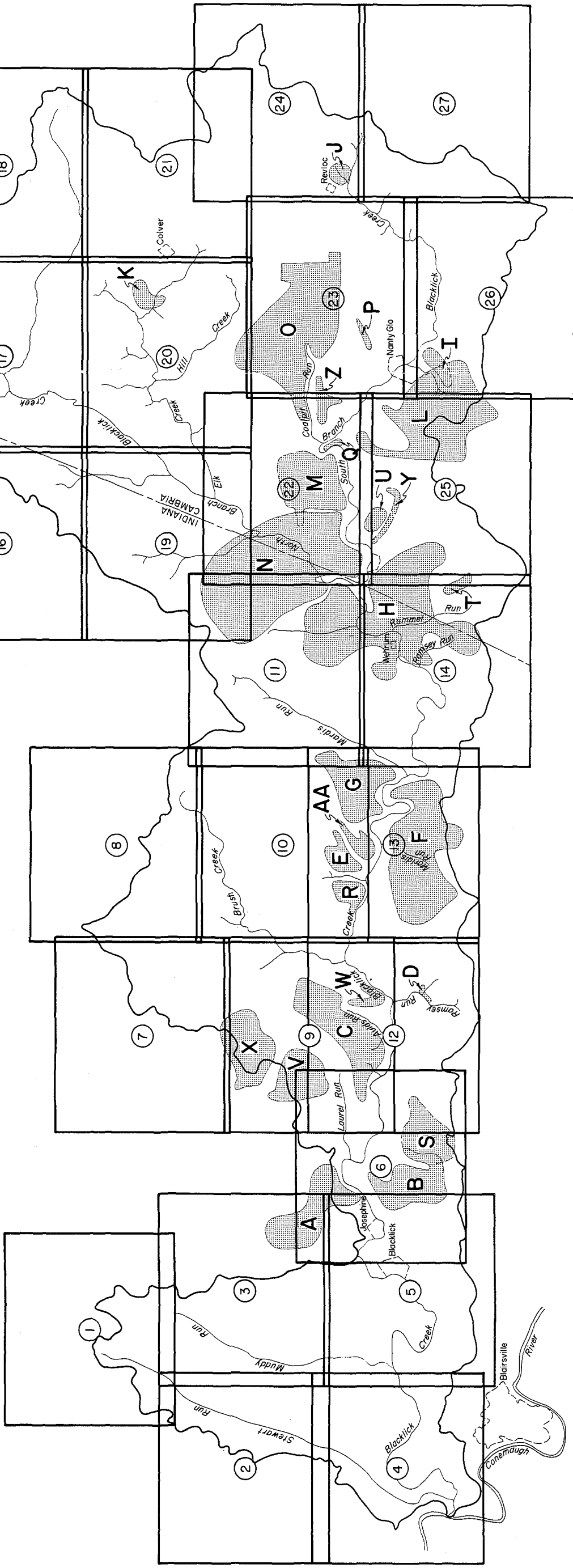
The Coal Mining Inventory Maps are detailed illustrations at a scale of 1"=2000' showing coal structure contours, stream and pollution source sampling stations, strip mines, coal waste banks, underground mine openings, and the general extent of some of the underground mining within the watershed. This information is superimposed over the most recent photo revised 7-1/2 minute U.S.G.S. topographic mapping.

The following detailed maps have been compiled from: (1) the available U.S.G.S. folios for the watershed and P.G.S. Atlas 57, 4th Series; (2) mapping that resulted from the cooperative State-Federal mine drainage investigations for the Kiskiminetas River Basin (3) abandoned mine maps from the U.S. Bureau of Mines and the WPA mine maps; (4) mine maps made available by mine companies in the watershed; (5) mine maps on file with the Bureau of Land Protection & Reclamation, Division of Mine Subsidence Regulation of DER; and (5) extensive field investigations.

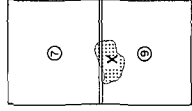
Because mining has been so extensive throughout the watershed, only the extent of deep mining for the mines involved with the major pollution sites has been delineated on the Coal Mining Inventory Maps to alleviate confusion in using the report.



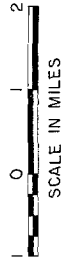
LOCATION MAP



GENERAL LIMITS OF ALL INTERRELATED STRIP MINES, DEEP MINE WORKINGS AND COAL WASTE BANKS—DEFINED AS AN INDIVIDUAL SITE WITHIN THIS REPORT



LOCATION OF SITE SHOWING COVERAGE OF COAL MINING INVENTORY MAPS



COMMONWEALTH OF PENNSYLVANIA
DEPARTMENT OF ENVIRONMENTAL RESOURCES

OPERATION SCARLIFT PROJECT SL 185
BLACKLICK CREEK WATERSHED
Cambria & Indiana Counties

COAL MINING INVENTORY
MAP SHEET INDEX

SEPT 1974

L E G E N D

- SURFACE MINE
- COAL WASTE
- DRIFT MINE
- SLOPE MINE
- MINE SHAFT
- DISCHARGE FROM MINE OPENING
- STRUCTURE CONTOUR
- STRUCTURAL AXIS
- EXTENT OF DEEP MINING
(AVAILABLE INFORMATION)
WITHIN MULTIPLE SEAMS

- PGH—PITTSBURGH
- UF—UPPER FREEPORT
- LF—LOWER FREEPORT
- UK—UPPER KITTANNING
- MK—MIDDLE KITTANNING
- LK—LOWER KITTANNING

- WATERSHED DIVIDE
- SUB-BASIN DIVIDE
- 26,48A
- 26,48B
- 26,48C

- WATER QUALITY SAMPLING STATION
(4895, 5125 AND OTHER FOUR DIGIT
NUMBERS ARE EPA STATIONS)
- COAL PREPARATION PLANT
- MINE DRAINAGE TREATMENT PLANT



COMMONWEALTH OF PENNSYLVANIA
DEPARTMENT OF ENVIRONMENTAL RESOURCES
OPERATION SCARLIFT PROJECT SL 185
BLACKLICK CREEK WATERSHED
 Cambria & Indiana Counties

COAL MINING INVENTORY

SEPT. 1974

SHEET 1 of 27





L E G E N D

- SURFACE MINE
- COAL WASTE
- DRIFT MINE
- SLOPE MINE
- MINE SHAFT
- DISCHARGE FROM MINE OPENING
- STRUCTURE CONTOUR
- STRUCTURAL AXIS
- EXTENT OF DEEP MINING
(AVAILABLE INFORMATION)
WITHIN MULTIPLE SEAMS
- PGH—PITTSBURGH
- UF—UPPER FREEPORT
- LF—LOWER FREEPORT
- WATERSHED DIVIDE
- SUB-BASIN DIVIDE
- SUB-BASIN NUMBER
- WATER QUALITY SAMPLING STATION
(4895, 5125 AND OTHER FOUR DIGIT
NUMBERS ARE EPA STATIONS)
- COAL PREPARATION PLANT
- MINE DRAINAGE TREATMENT PLANT

COMMONWEALTH OF PENNSYLVANIA
 DEPARTMENT OF ENVIRONMENTAL RESOURCES
 OPERATION SCARLIFT PROJECT SL 185
 BLACKLICK CREEK WATERSHED
 Cambria & Indiana Counties

COAL MINING INVENTORY

SEPT. 1974

SHEET 2 of 27

L E G E N D

- SURFACE MINE
- COAL WASTE
- DRIFT MINE
- SLOPE MINE
- MINE SHAFT
- DISCHARGE FROM MINE OPENING
- STRUCTURE CONTOUR
- STRUCTURAL AXIS
- EXTENT OF DEEP MINING
(AVAILABLE INFORMATION)
WITHIN MULTIPLE SEAMS

- ANTICLINE
- SYNCLINE
- WATER QUALITY SAMPLING STATION
(4895, 5125 AND OTHER FOUR DIGIT
NUMBERS ARE EPA STATIONS)
- COAL PREPARATION PLANT
- MINE DRAINAGE TREATMENT PLANT

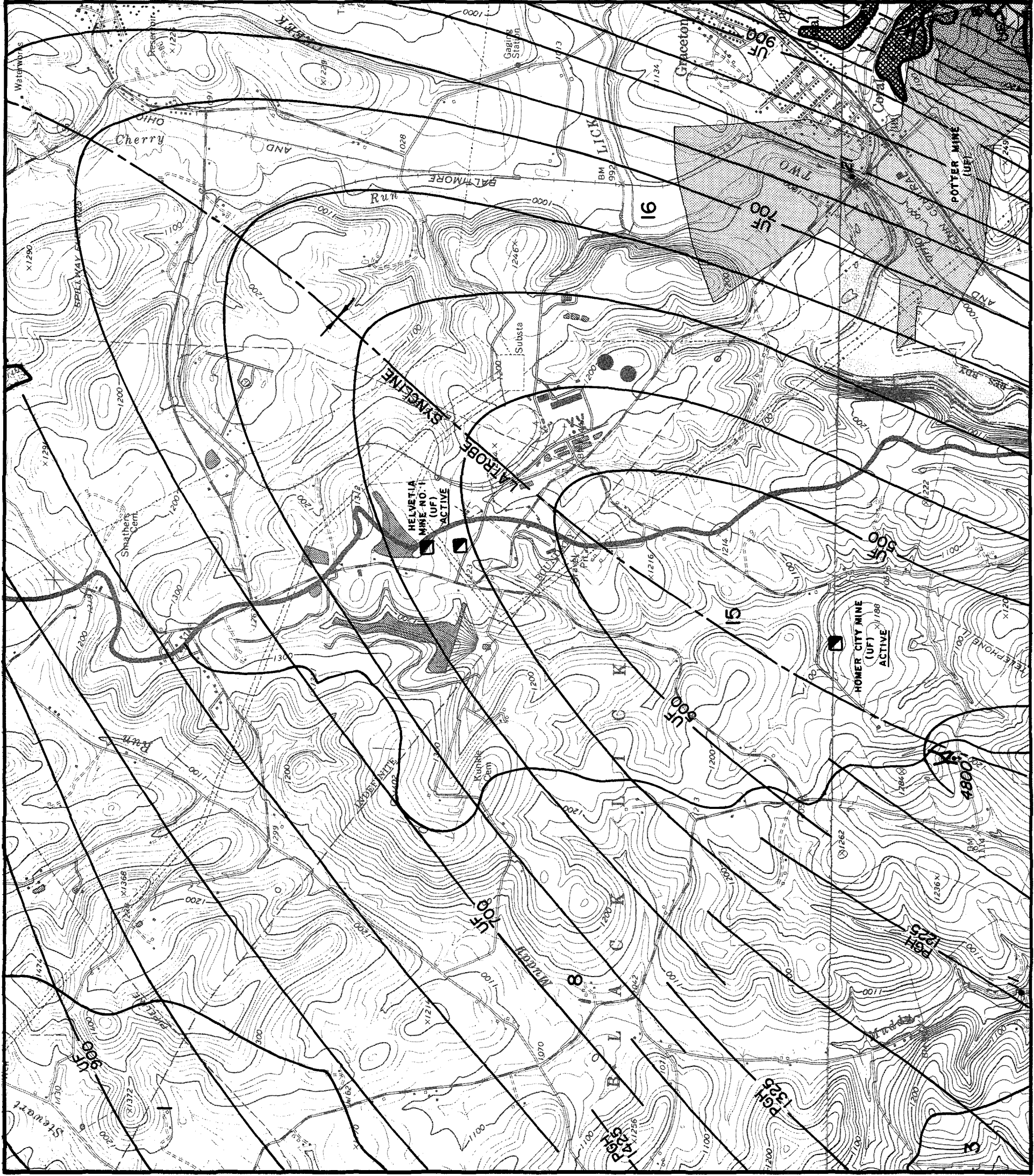
- PGH—PITTSBURGH
- UF—UPPER FREEPORT
- LF—LOWER FREEPORT
- UK—UPPER KITTANNING
- MK—MIDDLE KITTANNING
- LK—LOWER KITTANNING
- WATERSHED DIVIDE
- SUB-BASIN DIVIDE
- SUB-BASIN NUMBER

- WATER QUALITY SAMPLING STATION
(4895, 5125 AND OTHER FOUR DIGIT
NUMBERS ARE EPA STATIONS)
- COAL PREPARATION PLANT
- MINE DRAINAGE TREATMENT PLANT

SCALE IN MILES
0 1/2 1

COMMONWEALTH OF PENNSYLVANIA
DEPARTMENT OF ENVIRONMENTAL RESOURCES
OPERATION SCARLIFT PROJECT SL 185
BLACKLICK CREEK WATERSHED
Cambria & Indiana Counties
COAL MINING INVENTORY

SHEET 3 of 27
SEPT. 1974



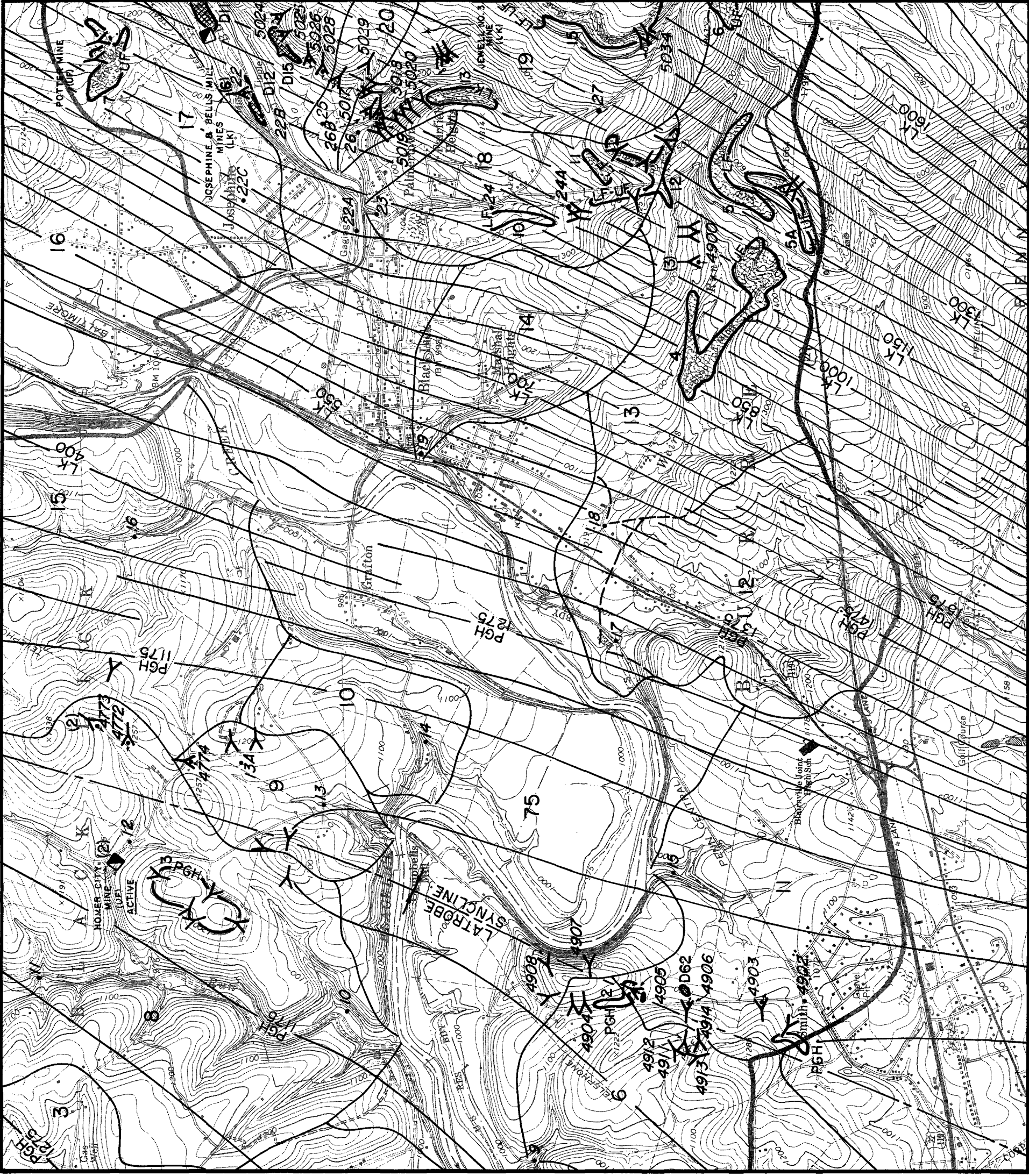


L E G E N D

- SURFACE MINE
- COAL WASTE
- DRIFT MINE
- SLOPE MINE
- MINE SHAFT
- DISCHARGE FROM MINE OPENING
- STRUCTURE CONTOUR
- STRUCTURAL AXIS
- EXTENT OF DEEP MINING (AVAILABLE INFORMATION) WITHIN MULTIPLE SEAMS
- ANTICLINE
- SYNCLINE
- PGH-PITTSBURGH
- UF-UPPER FREEPORT
- LF-LOWER FREEPORT
- WATERSHED DIVIDE
- SUB-BASIN DIVIDE
- SUB-BASIN NUMBER
- WATER QUALITY SAMPLING STATION (4895, 5125 AND OTHER FOUR DIGIT NUMBERS ARE EPA STATIONS)
- COAL PREPARATION PLANT
- MINE DRAINAGE TREATMENT PLANT



COMMONWEALTH OF PENNSYLVANIA
 DEPARTMENT OF ENVIRONMENTAL RESOURCES
 OPERATION SCARLIFT PROJECT SL 185
 BLACKLICK CREEK WATERSHED
 Cambria & Indiana Counties
 COAL MINING INVENTORY



L E G E N D

- SURFACE MINE
- COAL WASTE
- DRIFT MINE
- SLOPE MINE
- MINE SHAFT
- DISCHARGE FROM MINE OPENING
- STRUCTURE CONTOUR
- STRUCTURAL AXIS
- EXTENT OF DEEP MINING (AVAILABLE INFORMATION) WITHIN MULTIPLE SEAMS
- ANTICLINE
- SYNCLINE
- WATERSHED DIVIDE
- SUB-BASIN DIVIDE
- SUB-BASIN NUMBER
- WATER QUALITY SAMPLING STATION (4895, 5125 AND OTHER FOUR DIGIT NUMBERS ARE EPA STATIONS)
- COAL PREPARATION PLANT
- MINE DRAINAGE TREATMENT PLANT

PGH - PITTSBURGH
 UF - UPPER FREEPORT
 LF - LOWER FREEPORT

UK - UPPER KITTANNING
 MK - MIDDLE KITTANNING
 LK - LOWER KITTANNING

26,48A

• 21,46C

SCALE IN MILES

0 1/2 1

COMMONWEALTH OF PENNSYLVANIA

DEPARTMENT OF ENVIRONMENTAL RESOURCES

OPERATION SCARLIFT PROJECT SL 185

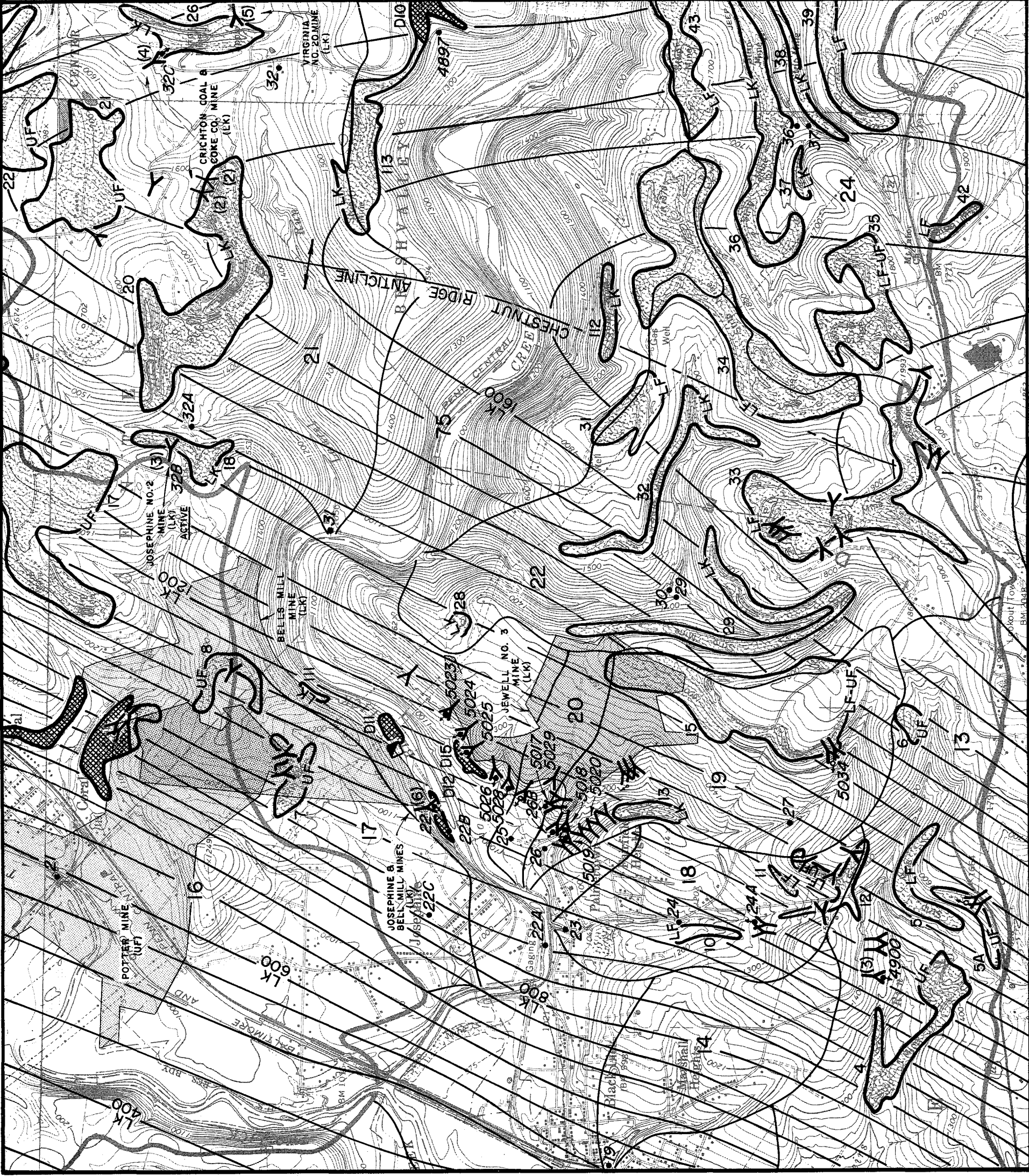
BLACKLICK CREEK WATERSHED

Cambria & Indiana Counties

COAL MINING INVENTORY

SHEET 5 of 27

SEPT. 1974



L E G E N D

SURFACE MINE
 COAL WASTE
 DRIFT MINE
 SLOPE MINE
 MINE SHAFT
 DISCHARGE FROM MINE OPENING
 STRUCTURE CONTOUR
 STRUCTURAL AXIS
 EXTENT OF DEEP MINING
 (AVAILABLE INFORMATION)
 WITHIN MULTIPLE SEAMS

PGH—PITTSBURGH
 UF—UPPER FREEPORT
 LF—LOWER FREEPORT

UK—UPPER KITTANNING
 MK—MIDDLE KITTANNING
 LK—LOWER KITTANNING

WATERSHED DIVIDE
 SUB-BASIN DIVIDE
 SUB-BASIN NUMBER

WATER QUALITY SAMPLING STATION
 (4895, 5125 AND OTHER FOUR DIGIT
 NUMBERS ARE EPA STATIONS)

COAL PREPARATION PLANT
 MINE DRAINAGE TREATMENT PLANT

26,48A
 • 21,46C

SCALE IN MILES
 0 1/2 1

COMMONWEALTH OF PENNSYLVANIA
 DEPARTMENT OF ENVIRONMENTAL RESOURCES
 OPERATION SCARLIFT PROJECT SL 185
 BLACKLICK CREEK WATERSHED
 Cambria & Indiana Counties

COAL MINING INVENTORY

SEPT. 1974

SHEET 6 of 27

L E G E N D

SURFACE MINE

COAL WASTE

DRIFT MINE

SLOPE MINE

MINE SHAFT

DISCHARGE FROM MINE OPENING

STRUCTURE CONTOUR

STRUCTURAL AXIS

EXTENT OF DEEP MINING
(AVAILABLE INFORMATION)
WITHIN MULTIPLE SEAMS

PGH - PITTSBURGH
UF - UPPER FREEPORT
LF - LOWER FREEPORT

WATERSHED DIVIDE

SUB - BASIN DIVIDE

SUB - BASIN NUMBER

WATER QUALITY SAMPLING STATION
(4895, 5125 AND OTHER FOUR DIGIT
NUMBERS ARE EPA STATIONS)

COAL PREPARATION PLANT

MINE DRAINAGE TREATMENT PLANT

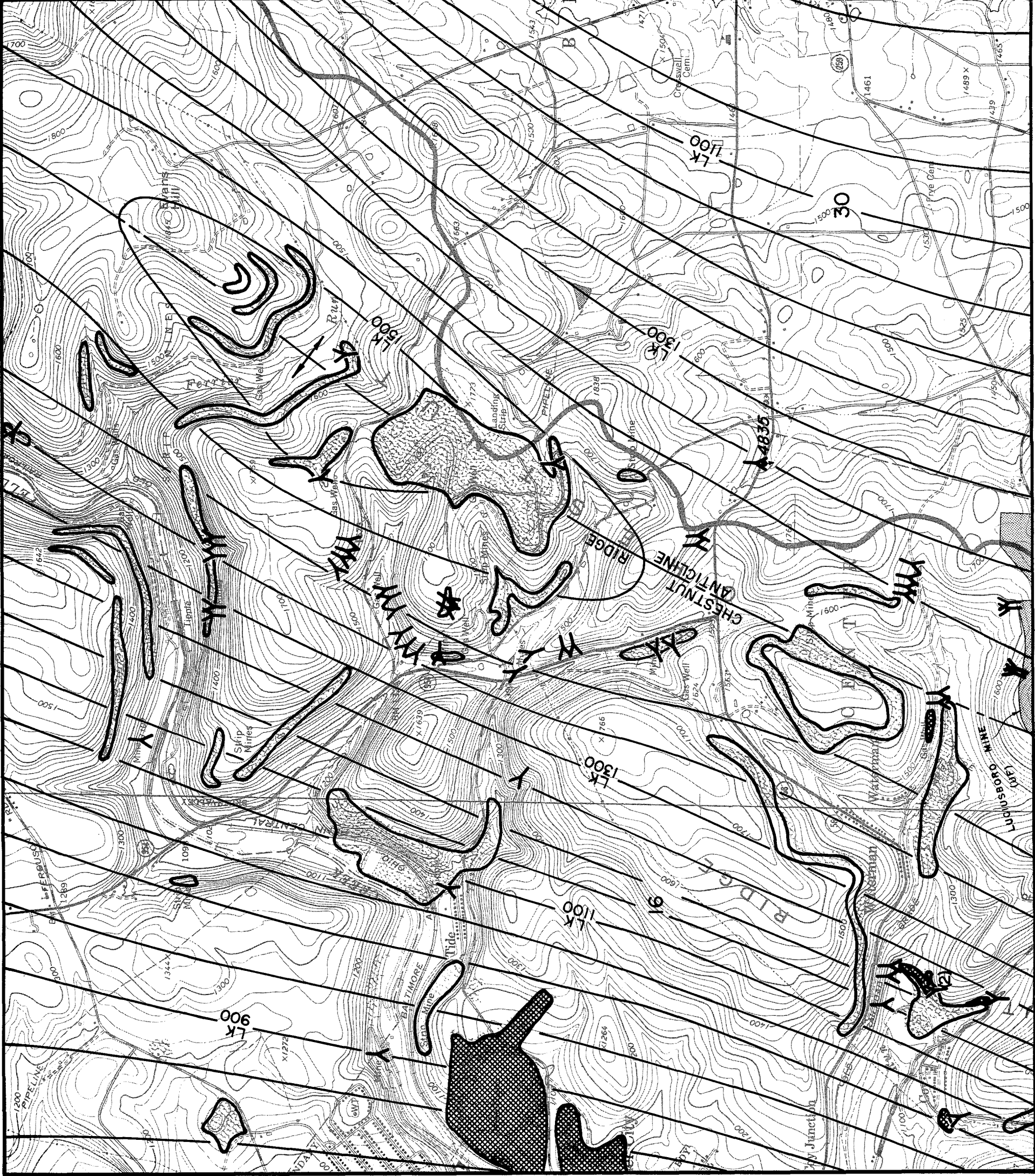


COMMONWEALTH OF PENNSYLVANIA
DEPARTMENT OF ENVIRONMENTAL RESOURCES
OPERATION SCARLIFT PROJECT SL 185
BLACKLICK CREEK WATERSHED
Cambria & Indiana Counties







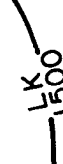
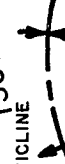
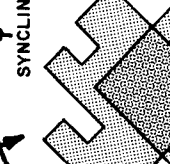





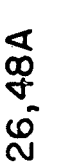
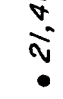


COAL MINING INVENTORY

SEPT. 1974

SHEET 7 of 27



L E G E N D

-  SURFACE MINE
-  COAL WASTE
-  DRIFT MINE
-  SLOPE MINE
-  MINE SHAFT
-  DISCHARGE FROM MINE OPENING
-  STRUCTURE CONTOUR
-  STRUCTURAL AXIS
-  EXTENT OF DEEP MINING
(AVAILABLE INFORMATION)
WITHIN MULTIPLE SEAMS
-  PGH—PITTSBURGH
-  UF—UPPER FREEPORT
-  LF—LOWER FREEPORT
-  WATERSHED DIVIDE
-  SUB-BASIN DIVIDE
-  SUB-BASIN NUMBER
-  WATER QUALITY SAMPLING STATION
(4895, 5125 AND OTHER FOUR DIGIT
NUMBERS ARE EPA STATIONS)
-  COAL PREPARATION PLANT
-  MINE DRAINAGE TREATMENT PLANT

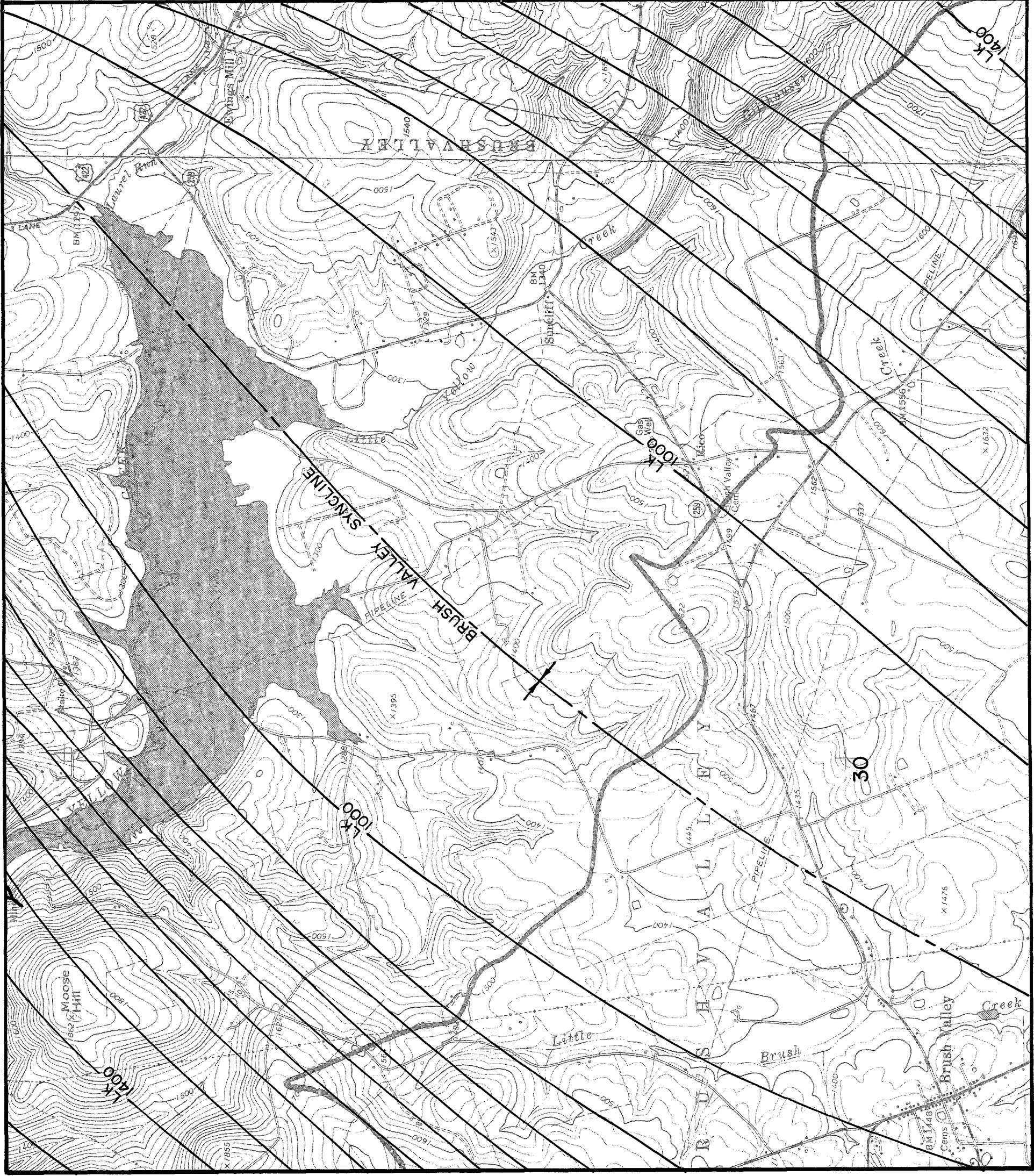


COMMONWEALTH OF PENNSYLVANIA
DEPARTMENT OF ENVIRONMENTAL RESOURCES
OPERATION SCARLIFT PROJECT SL 185
BLACKLICK CREEK WATERSHED
Cambria & Indiana Counties

COAL MINING INVENTORY

SEPT. 1974

SHEET 8 of 27



L E G E N D

9 SURFACE MINE

D9 COAL WASTE

DRIFT MINE

SLOPE MINE

MINE SHAFT

DISCHARGE FROM MINE OPENING

STRUCTURE CONTOUR

STRUCTURAL AXIS

EXTENT OF DEEP MINING
(AVAILABLE INFORMATION)
WITHIN MULTIPLE SEAMS

PGH—PITTSBURGH UK—UPPER KITTANNING
UF—UPPER FREEPORT MK—MIDDLE KITTANNING
LF—LOWER FREEPORT LK—LOWER KITTANNING

WATERSHED DIVIDE

SUB-BASIN DIVIDE

SUB-BASIN NUMBER

26, 48A

• 21, 46C
WATER QUALITY SAMPLING STATION
(4895, 5125 AND OTHER FOUR DIGIT
NUMBERS ARE EPA STATIONS)

COAL PREPARATION PLANT

MINE DRAINAGE TREATMENT PLANT

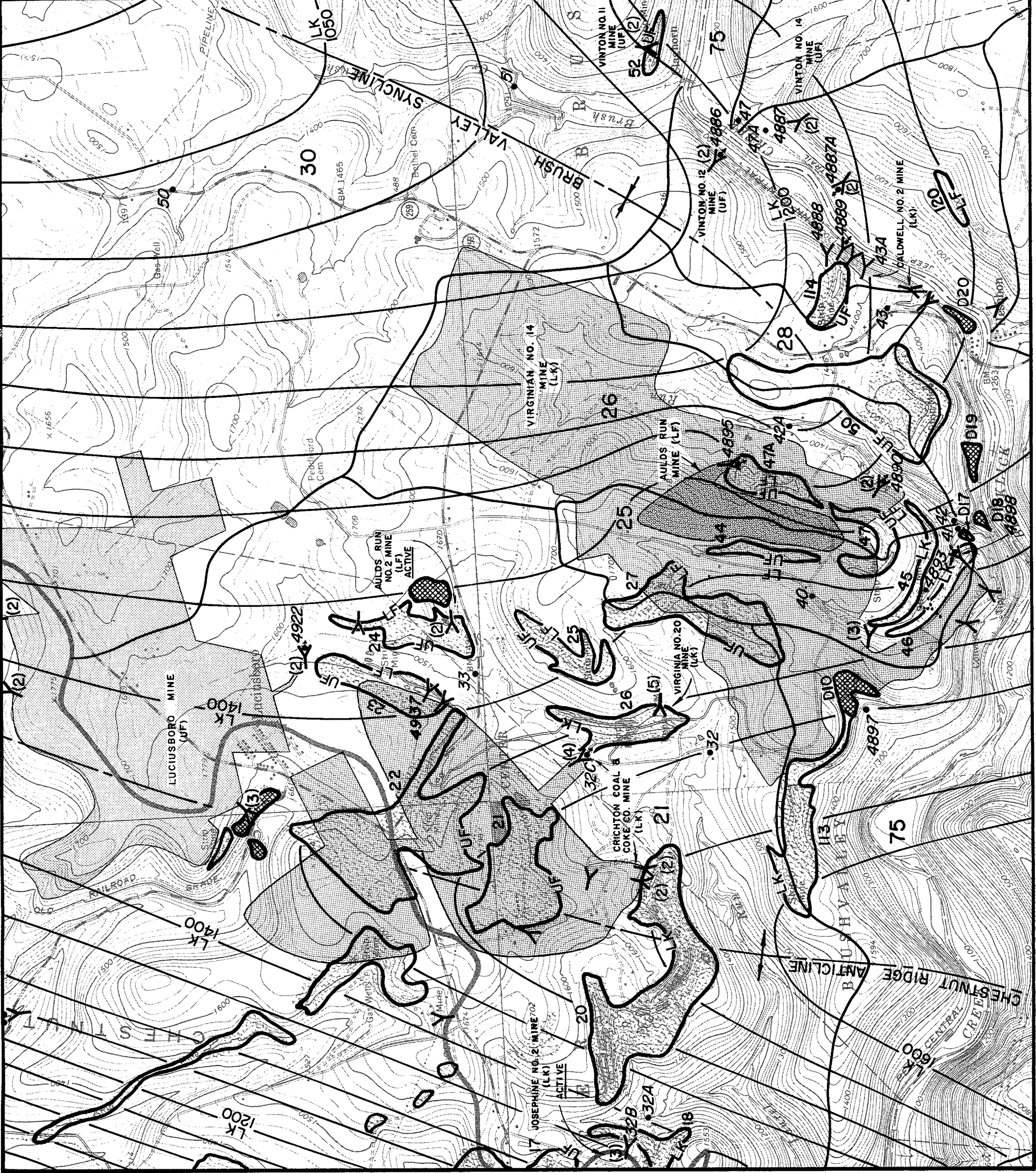


COMMONWEALTH OF PENNSYLVANIA
DEPARTMENT OF ENVIRONMENTAL RESOURCES
OPERATION SCARLIFT PROJECT SL 185
BLACKLICK CREEK WATERSHED
Cambria & Indiana Counties

COAL MINING INVENTORY

SEPT. 1974

SHEET 9 of 27



L E G E N D

SURFACE MINE



COAL WASTE



DRIFT MINE



SLOPE MINE



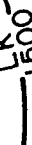
MINE SHAFT



DISCHARGE FROM MINE OPENING



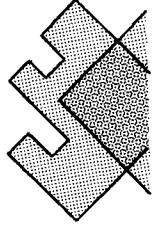
STRUCTURE CONTOUR



STRUCTURAL AXIS



EXTENT OF DEEP MINING
(AVAILABLE INFORMATION)
WITHIN MULTIPLE SEAMS



PGH - PITTSBURGH
UK - UPPER KITTANNING
UF - UPPER FREEPORT
MK - MIDDLE KITTANNING
LF - LOWER FREEPORT
LK - LOWER KITTANNING

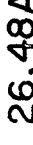
WATERSHED DIVIDE



SUB - BASIN DIVIDE



SUB - BASIN NUMBER



WATER QUALITY SAMPLING STATION
(4895, 5125 AND OTHER FOUR DIGIT
NUMBERS ARE EPA STATIONS)



COAL PREPARATION PLANT



MINE DRAINAGE TREATMENT PLANT



SCALE IN MILES

COMMONWEALTH OF PENNSYLVANIA

DEPARTMENT OF ENVIRONMENTAL RESOURCES

OPERATION SCARLIFT PROJECT SL 185

BLACKLICK CREEK WATERSHED

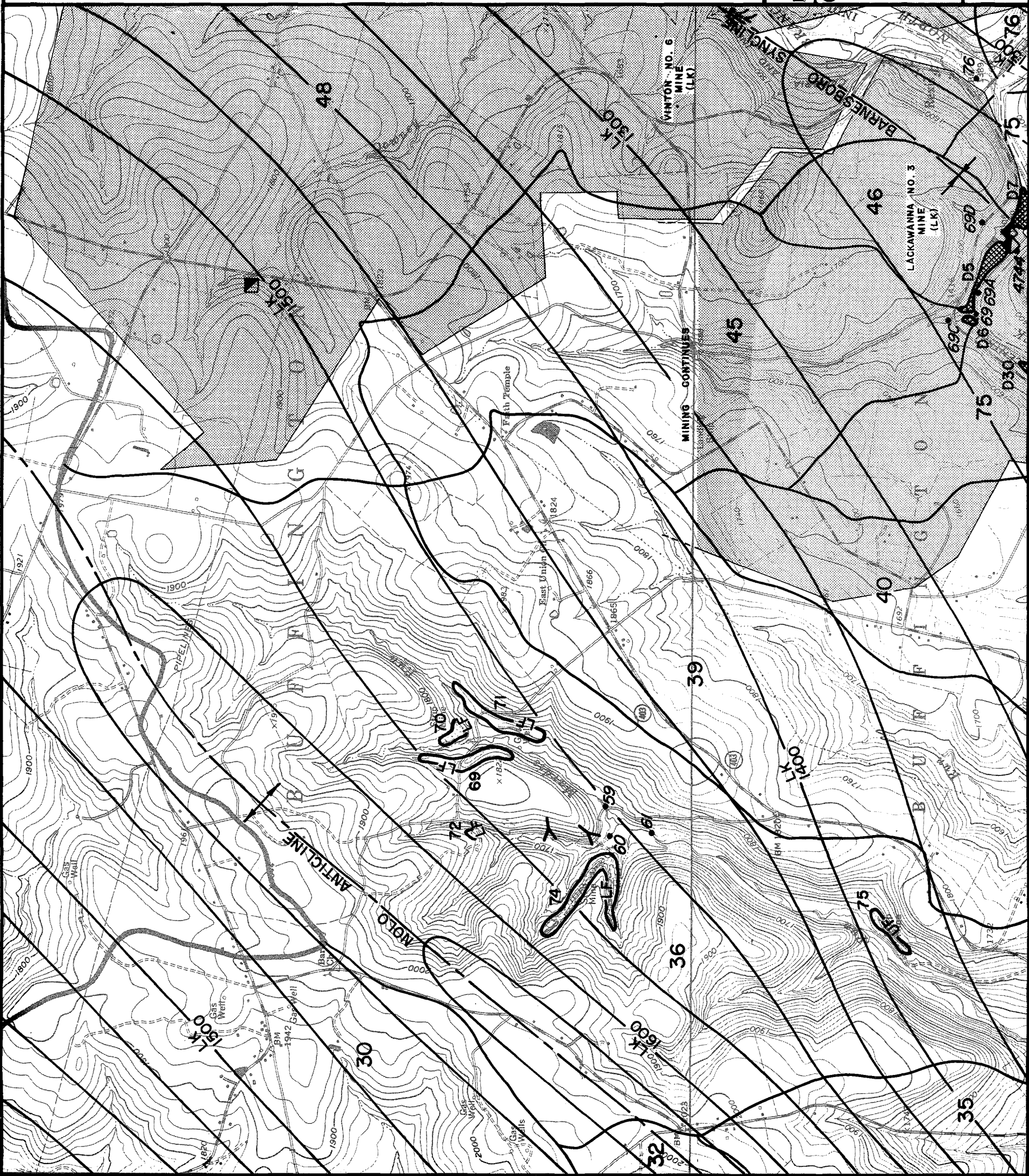
Cambria & Indiana Counties

COAL MINING INVENTORY

SEPT. 1974

SHEET 10 of 27





L E G E N D

- SURFACE MINE
- COAL WASTE
- DRIFT MINE
- SLOPE MINE
- MINE SHAFT
- DISCHARGE FROM MINE OPENING
- STRUCTURE CONTOUR
- STRUCTURAL AXIS
- EXTENT OF DEEP MINING (AVAILABLE INFORMATION) WITHIN MULTIPLE SEAMS
- PGH - PITTSBURGH
- UF - UPPER FREEPORT
- LF - LOWER FREEPORT
- UK - UPPER KITTANNING
- MK - MIDDLE KITTANNING
- LK - LOWER KITTANNING
- WATERSHED DIVIDE
- SUB - BASIN DIVIDE
- SUB - BASIN NUMBER
- WATER QUALITY SAMPLING STATION (4895, 5125 AND OTHER FOUR DIGIT NUMBERS ARE EPA STATIONS)
- COAL PREPARATION PLANT
- MINE DRAINAGE TREATMENT PLANT



COMMONWEALTH OF PENNSYLVANIA
 DEPARTMENT OF ENVIRONMENTAL RESOURCES
 OPERATION SCARLIFT PROJECT SL 185
 BLACKLICK CREEK WATERSHED
 Cambria & Indiana Counties

COAL MINING INVENTORY

SEPT. 1974

L E G E N D

- SURFACE MINE
- COAL WASTE
- DRIFT MINE
- SLOPE MINE
- MINE SHAFT
- DISCHARGE FROM MINE OPENING
- STRUCTURE CONTOUR
- STRUCTURAL AXIS
- EXTENT OF DEEP MINING (AVAILABLE INFORMATION) WITHIN MULTIPLE SEAMS

- PGH-PITTSBURGH
- UF-UPPER FREEPORT
- LF-LOWER FREEPORT
- WATERSHED DIVIDE
- SUB-BASIN DIVIDE
- SUB-BASIN NUMBER
- WATER QUALITY SAMPLING STATION (4895, 5125 AND OTHER FOUR DIGIT NUMBERS ARE EPA STATIONS)
- COAL PREPARATION PLANT
- MINE DRAINAGE TREATMENT PLANT

UK-UPPER KITTANNING
 MK-MIDDLE KITTANNING
 LK-LOWER KITTANNING

26,48A

• 21,46C

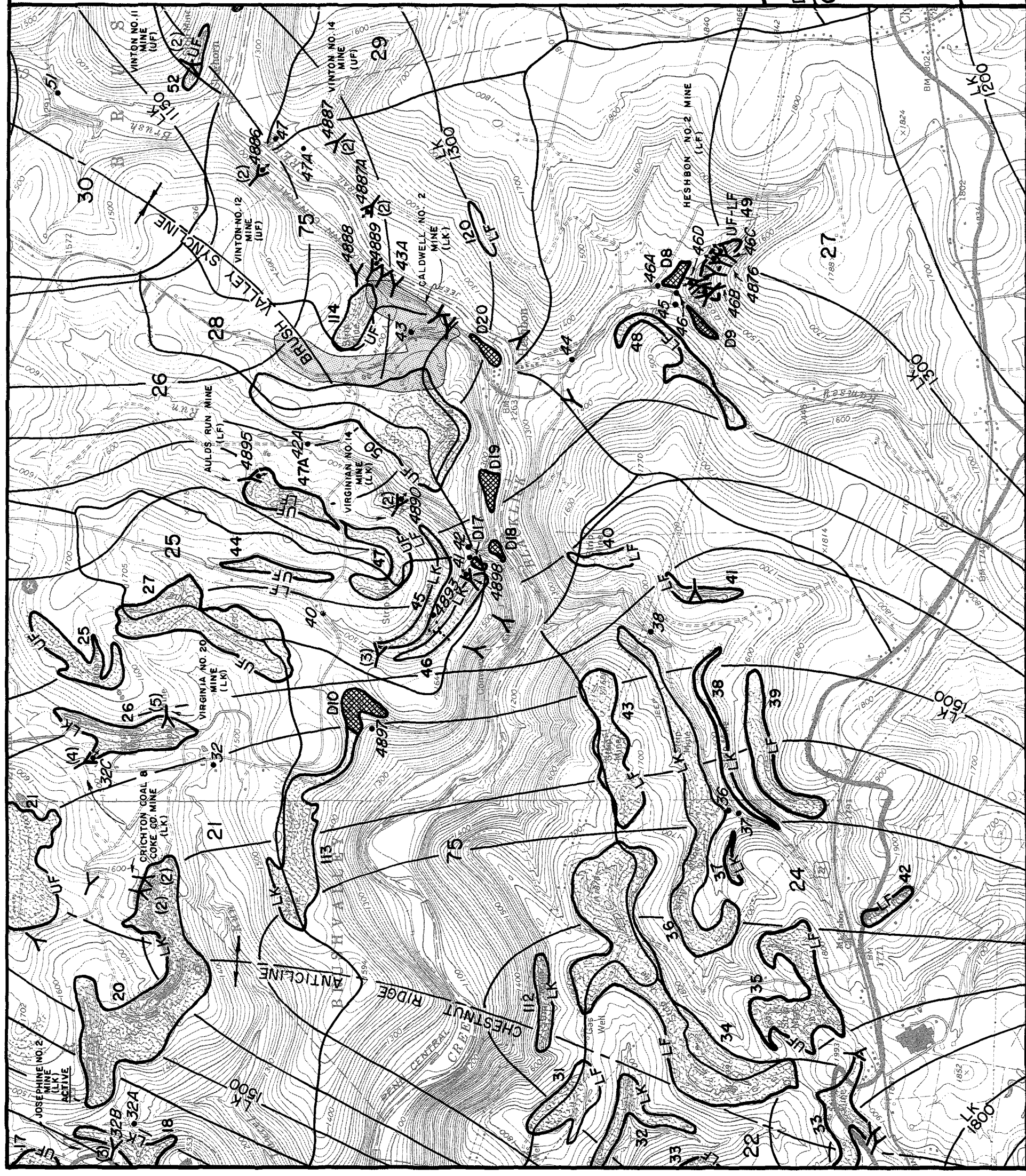
SCALE IN MILES
 0 1/2

COMMONWEALTH OF PENNSYLVANIA
 DEPARTMENT OF ENVIRONMENTAL RESOURCES
 OPERATION SCARLIFT PROJECT SL 185
 BLACKLICK CREEK WATERSHED
 Cambria & Indiana Counties

COAL MINING INVENTORY

SEPT. 1974

SHEET 12 of 27



L E G E N D

9 SURFACE MINE

D9 COAL WASTE

— DRIFT MINE

— SLOPE MINE

■ MINE SHAFT

→ DISCHARGE FROM MINE OPENING

— STRUCTURE CONTOUR

— STRUCTURAL AXIS

EXTENT OF DEEP MINING
(AVAILABLE INFORMATION)
WITHIN MULTIPLE SEAMS

PGH—PITTSBURGH UK—UPPER KITTANNING
UF—UPPER FREEPORT MK—MIDDLE KITTANNING
LF—LOWER FREEPORT LK—LOWER KITTANNING

— WATERSHED DIVIDE

— SUB-BASIN DIVIDE

— SUB-BASIN NUMBER

26,48A
• 21,46C

● COAL PREPARATION PLANT

▲ MINE DRAINAGE TREATMENT PLANT

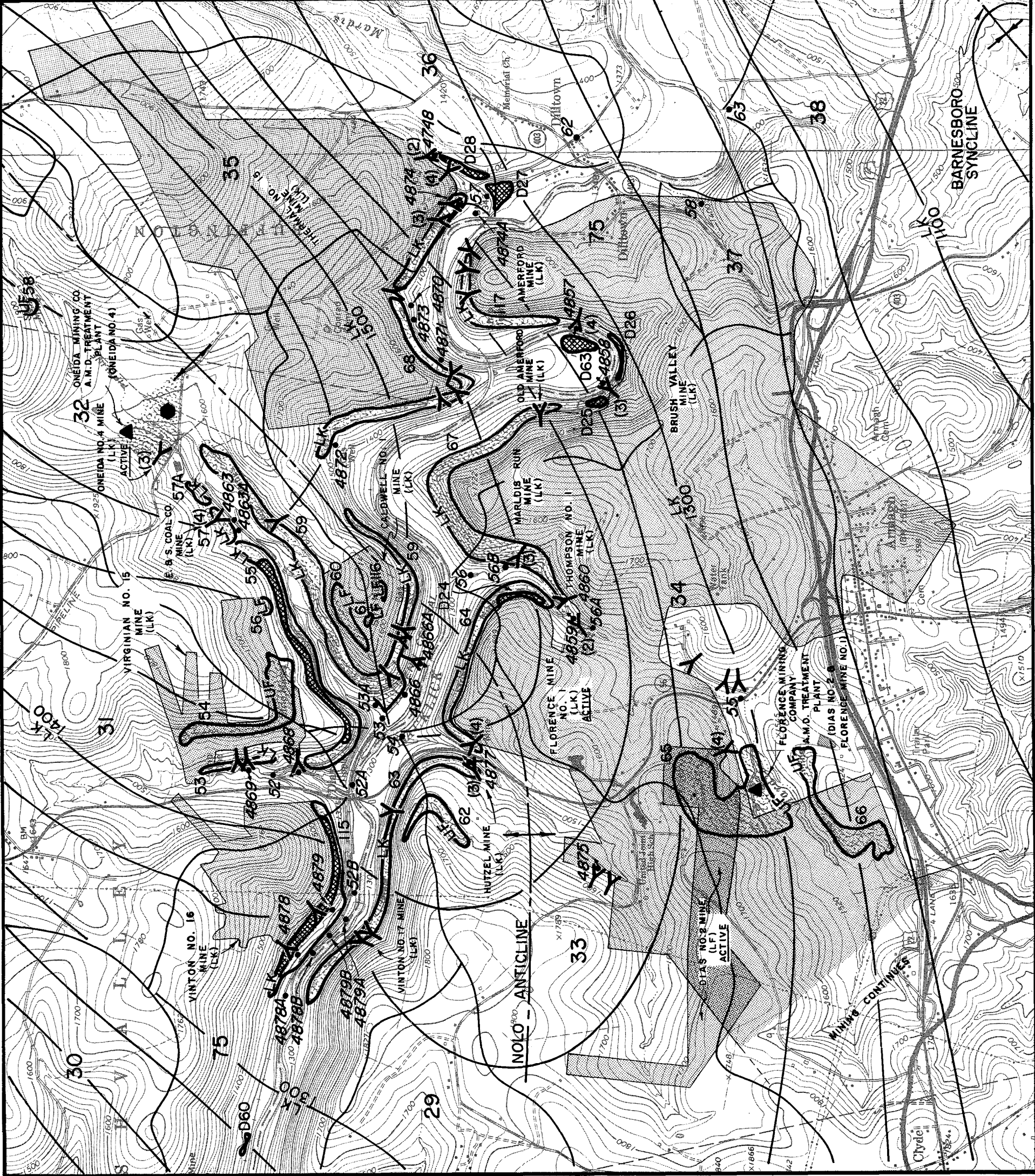
0 1/2 1
SCALE IN MILES

COMMONWEALTH OF PENNSYLVANIA
DEPARTMENT OF ENVIRONMENTAL RESOURCES
OPERATION SCARLIFT PROJECT SL 185
BLACKLICK CREEK WATERSHED
Cambria & Indiana Counties

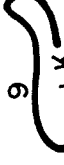








COAL MINING INVENTORY

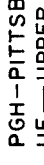
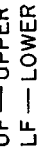




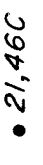


SEPT. 1974

SHEET 13 of 27



L E G E N D

-  SURFACE MINE
-  COAL WASTE
-  DRIFT MINE
-  SLOPE MINE
-  MINE SHAFT
-  DISCHARGE FROM MINE OPENING
-  STRUCTURE CONTOUR
-  STRUCTURAL AXIS
-  EXTENT OF DEEP MINING (AVAILABLE INFORMATION) WITHIN MULTIPLE SEAMS

-  PGH - PITTSBURGH
-  UF - UPPER FREEPORT
-  LF - LOWER FREEPORT
-  WATERSHED DIVIDE
-  SUB-BASIN DIVIDE
-  SUB-BASIN NUMBER
-  WATER QUALITY SAMPLING STATION (4895, 5125 AND OTHER FOUR DIGIT NUMBERS ARE EPA STATIONS)
-  COAL PREPARATION PLANT
-  MINE DRAINAGE TREATMENT PLANT



COMMONWEALTH OF PENNSYLVANIA
 DEPARTMENT OF ENVIRONMENTAL RESOURCES
 OPERATION SCARLIFT PROJECT SL 185
 BLACKLICK CREEK WATERSHED
 Cambria & Indiana Counties
 COAL MINING INVENTORY

SHEET 14 of 27
 SEPT. 1974

