

**L E G E N D**

- SURFACE MINE
- COAL WASTE
- DRIFT MINE
- SLOPE MINE
- MINE SHAFT
- DISCHARGE FROM MINE OPENING
- STRUCTURE CONTOUR
- STRUCTURAL AXIS
- EXTENT OF DEEP MINING (AVAILABLE INFORMATION) WITHIN MULTIPLE SEAMS
- PGH-PITTSBURGH
- UK-UPPER KITTANNING
- UF-UPPER FREEPORT
- MK-MIDDLE KITTANNING
- LF-LOWER FREEPORT
- LK-LOWER KITTANNING
- WATERSHED DIVIDE
- SUB-BASIN DIVIDE
- SUB-BASIN NUMBER
- WATER QUALITY SAMPLING STATION (4895, 5125 AND OTHER FOUR DIGIT NUMBERS ARE EPA STATIONS)
- COAL PREPARATION PLANT
- MINE DRAINAGE TREATMENT PLANT

0 1/2 1  
SCALE IN MILES

**COMMONWEALTH OF PENNSYLVANIA**  
**DEPARTMENT OF ENVIRONMENTAL RESOURCES**  
**OPERATION SCARLIFT PROJECT SL 185**  
**BLACKLICK CREEK WATERSHED**  
 Cambria & Indiana Counties

**COAL MINING INVENTORY**

**26,48A**

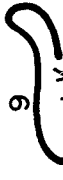
**SEPT. 1974**

**SHEET 15 of 27**



**L E G E N D**

SURFACE MINE



COAL WASTE



DRIFT MINE



SLOPE MINE



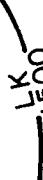
MINE SHAFT



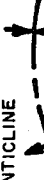
DISCHARGE FROM MINE OPENING



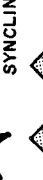
STRUCTURE CONTOUR



STRUCTURAL AXIS



EXTENT OF DEEP MINING  
(AVAILABLE INFORMATION)  
WITHIN MULTIPLE SEAMS



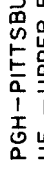
ANTICLINE



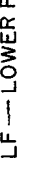
SYNCLINE



WATERSHED DIVIDE



SUB-BASIN DIVIDE



SUB-BASIN NUMBER



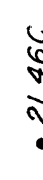
WATER QUALITY SAMPLING STATION  
(4895,5125 AND OTHER FOUR DIGIT  
NUMBERS ARE EPA STATIONS)



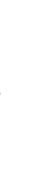
COAL PREPARATION PLANT



MINE DRAINAGE TREATMENT PLANT



SCALE IN MILES



PGH—PITTSBURGH  
UF—UPPER FREEPORT  
LF—LOWER FREEPORT

UK—UPPER KITTANNING  
MK—MIDDLE KITTANNING  
LK—LOWER KITTANNING

26,48A

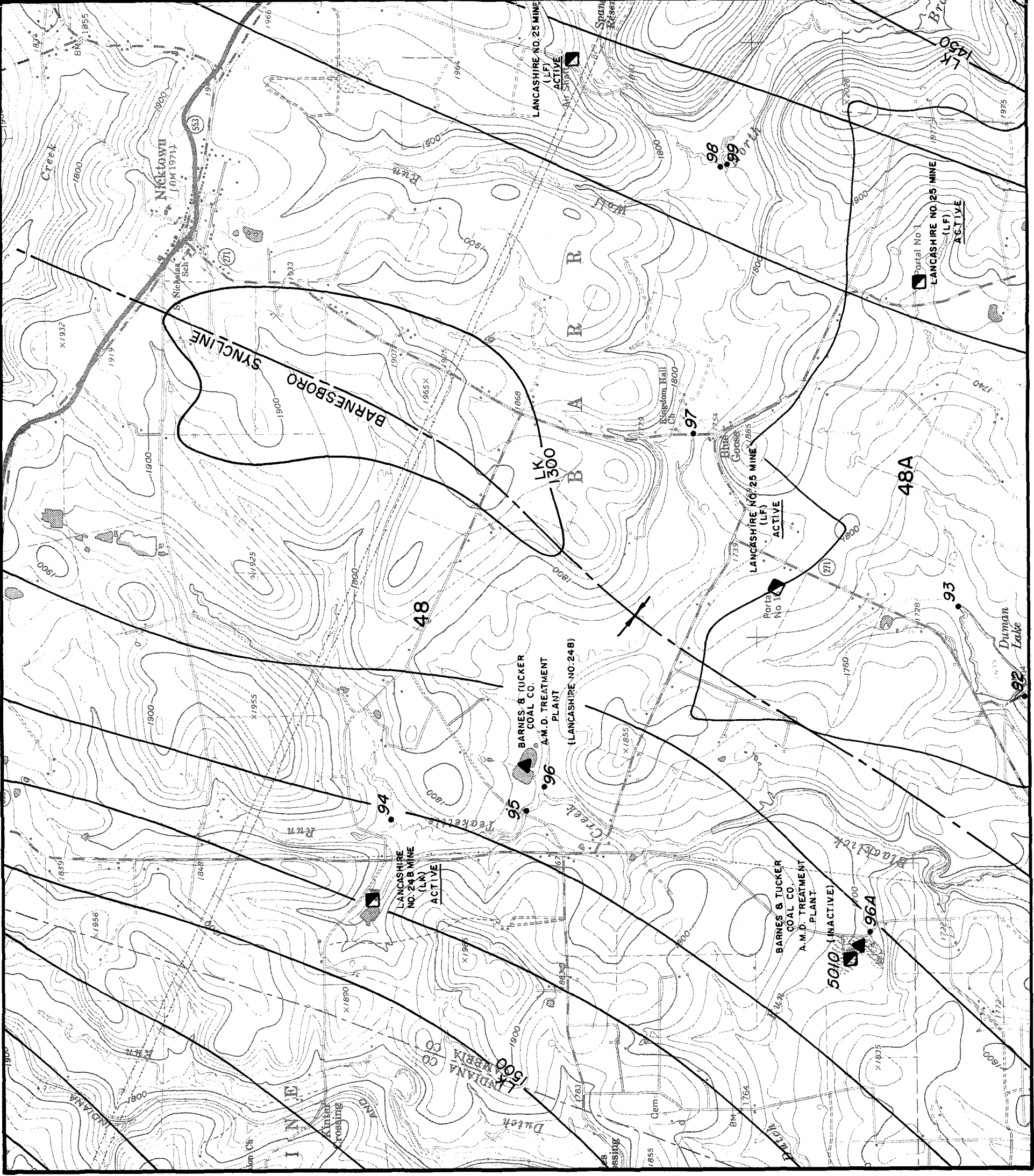
• 21,46C

**COMMONWEALTH OF PENNSYLVANIA**  
**DEPARTMENT OF ENVIRONMENTAL RESOURCES**  
**OPERATION SCARLIFT PROJECT SL 185**  
**BLACKLICK CREEK WATERSHED**  
Cambria & Indiana Counties

**COAL MINING INVENTORY**

SEPT. 1974

SHEET 17 of 27



L E G E N D

9  
LK

9  
LK

D9

D9

Y

Y

Z

Z

■

■

DISCHARGE FROM MINE OPENING

→

STRUCTURE CONTOUR

LK 1500

STRUCTURAL AXIS

SYNCLINE

EXTENT OF DEEP MINING  
(AVAILABLE INFORMATION)  
WITHIN MULTIPLE SEAMS

■

PGH - PITTSBURGH  
UF - UPPER FREEPORT  
LF - LOWER FREEPORT

UK - UPPER KITTANNING  
MK - MIDDLE KITTANNING  
LK - LOWER KITTANNING

WATERSHED DIVIDE

—

SUB - BASIN DIVIDE

—

SUB - BASIN NUMBER

26,48A

WATER QUALITY SAMPLING STATION  
(4895,5125 AND OTHER FOUR DIGIT  
NUMBERS ARE EPA STATIONS)

• 21,46C

COAL PREPARATION PLANT

●

MINE DRAINAGE TREATMENT PLANT

▲

SCALE IN MILES

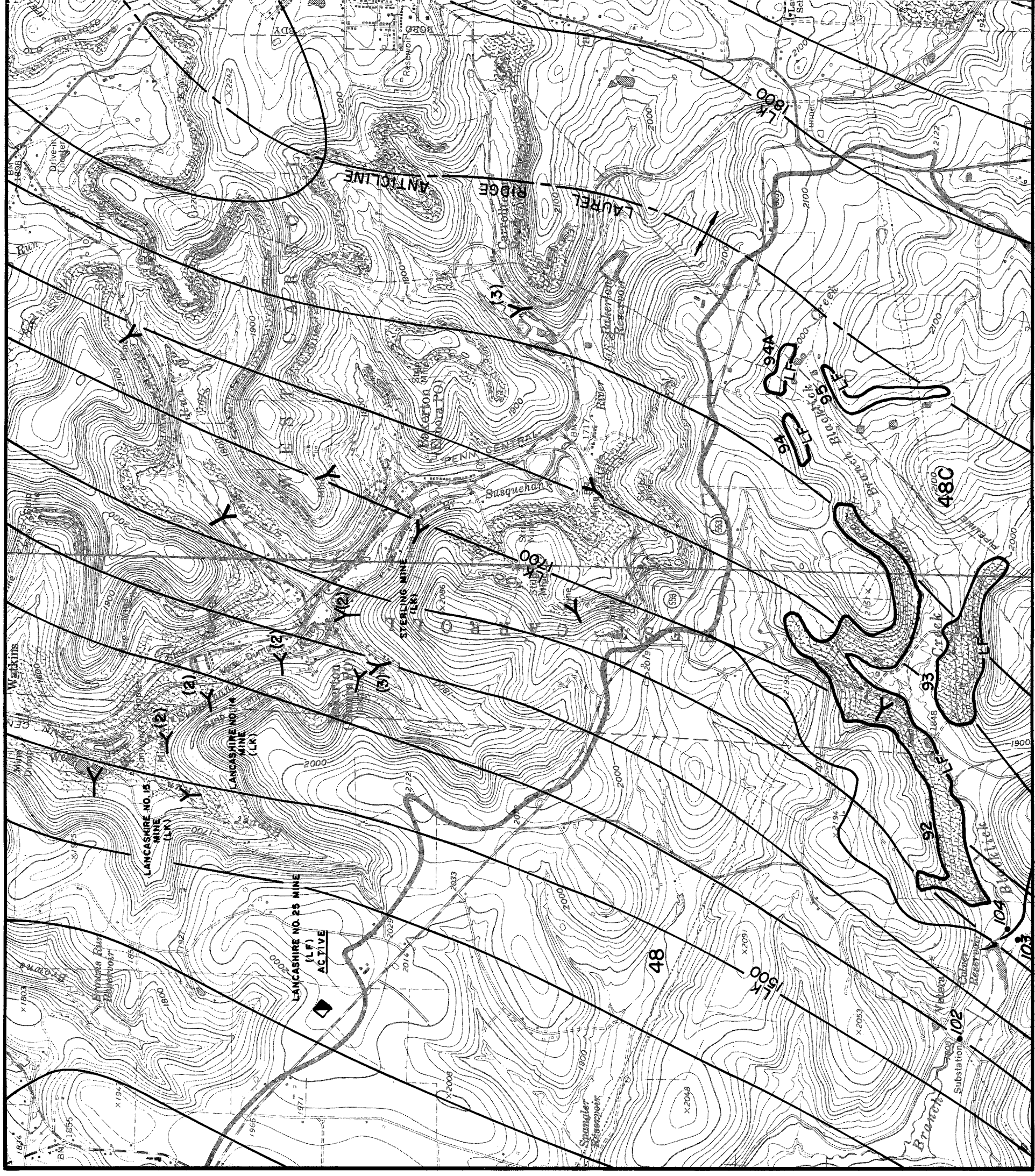
0 1/2 1

COMMONWEALTH OF PENNSYLVANIA  
DEPARTMENT OF ENVIRONMENTAL RESOURCES  
OPERATION SCARLIFT PROJECT SL 185  
BLACKLICK CREEK WATERSHED  
Cambria & Indiana Counties

COAL MINING INVENTORY

SEPT. 1974

SHEET 18 of 27



**L E G E N D**

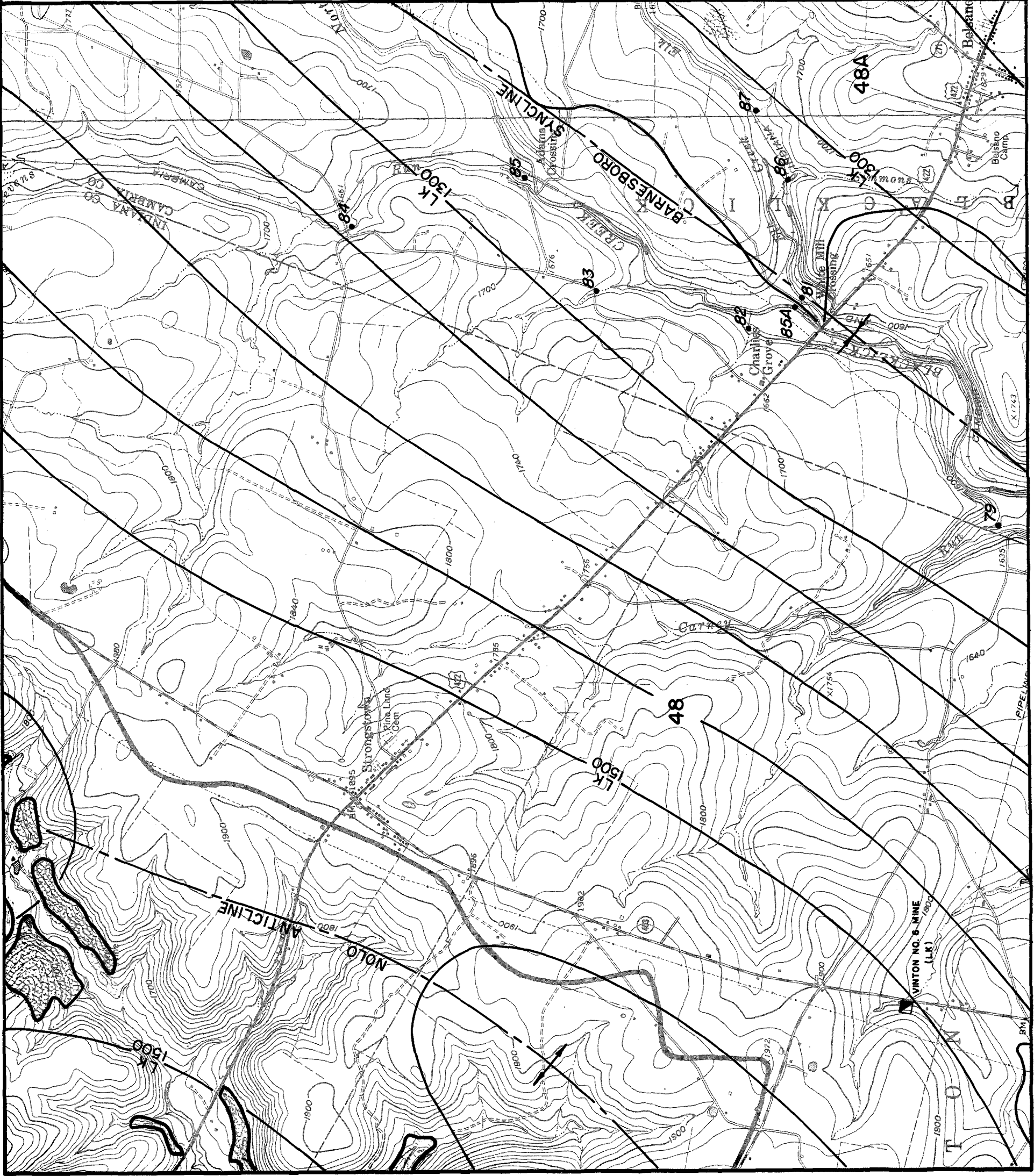
- SURFACE MINE
- COAL WASTE
- DRIFT MINE
- SLOPE MINE
- MINE SHAFT
- DISCHARGE FROM MINE OPENING
- STRUCTURE CONTOUR
- STRUCTURAL AXIS
- EXTENT OF DEEP MINING  
(AVAILABLE INFORMATION)  
WITHIN MULTIPLE SEAMS

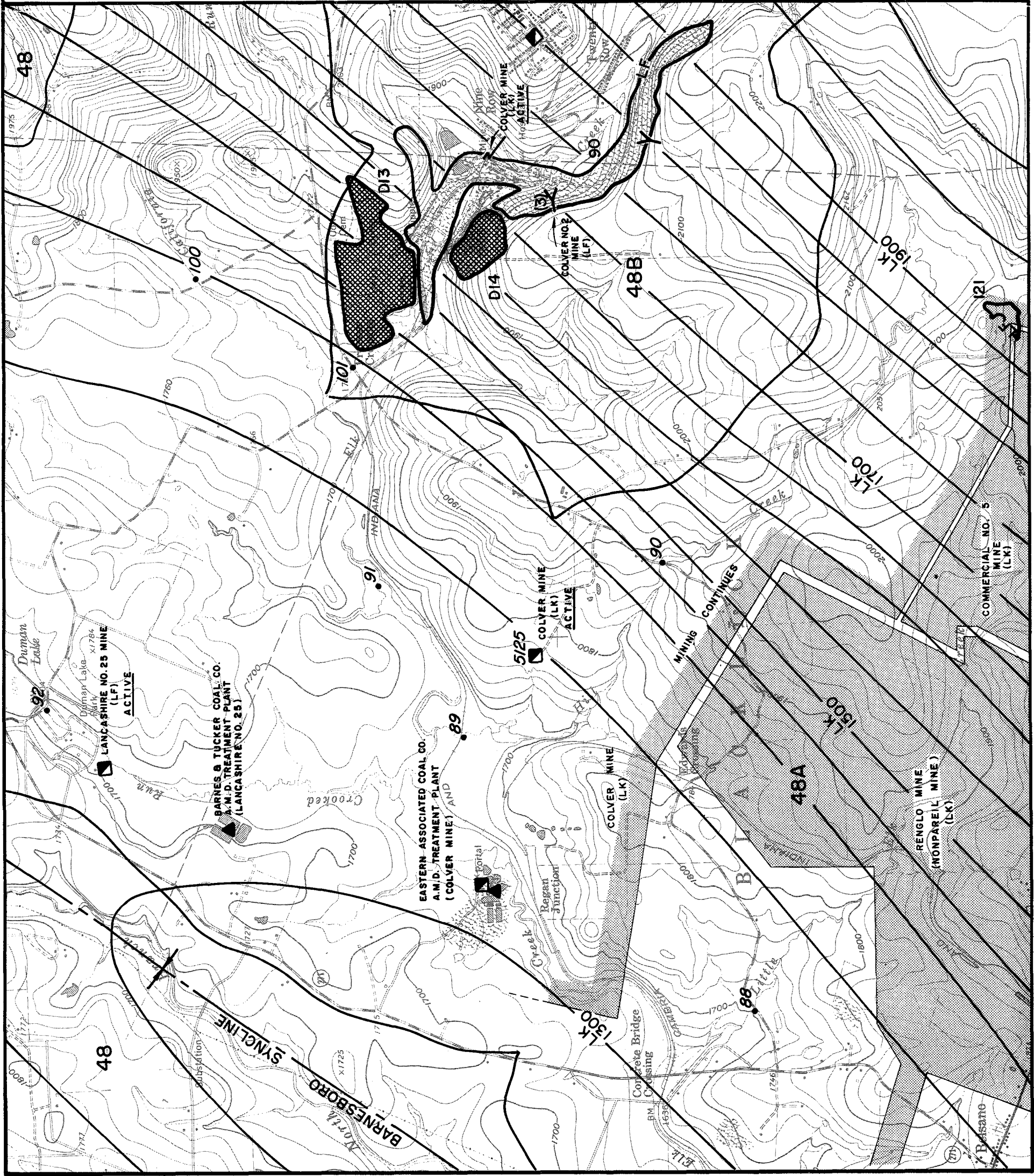
- ANTICLINE
- SYNCLINE
- EXTENT OF DEEP MINING  
(AVAILABLE INFORMATION)  
WITHIN MULTIPLE SEAMS
- PGH—PITTSBURGH
- UF—UPPER FREEPORT
- LF—LOWER FREEPORT
- UK—UPPER KITTANNING
- MK—MIDDLE KITTANNING
- LK—LOWER KITTANNING
- WATERSHED DIVIDE
- SUB-BASIN DIVIDE
- SUB-BASIN NUMBER
- WATER QUALITY SAMPLING STATION  
(4895, 5125 AND OTHER FOUR DIGIT  
NUMBERS ARE EPA STATIONS)
- COAL PREPARATION PLANT
- MINE DRAINAGE TREATMENT PLANT

- SCALE IN MILES
- COMMONWEALTH OF PENNSYLVANIA
- DEPARTMENT OF ENVIRONMENTAL RESOURCES
- OPERATION SCARLIFT PROJECT SL185
- BLACKLICK CREEK WATERSHED  
Cambria & Indiana Counties
- COAL MINING INVENTORY

COMMONWEALTH OF PENNSYLVANIA  
DEPARTMENT OF ENVIRONMENTAL RESOURCES  
OPERATION SCARLIFT PROJECT SL185  
BLACKLICK CREEK WATERSHED  
Cambria & Indiana Counties  
COAL MINING INVENTORY

SHEET 19 of 27  
SEPT. 1974





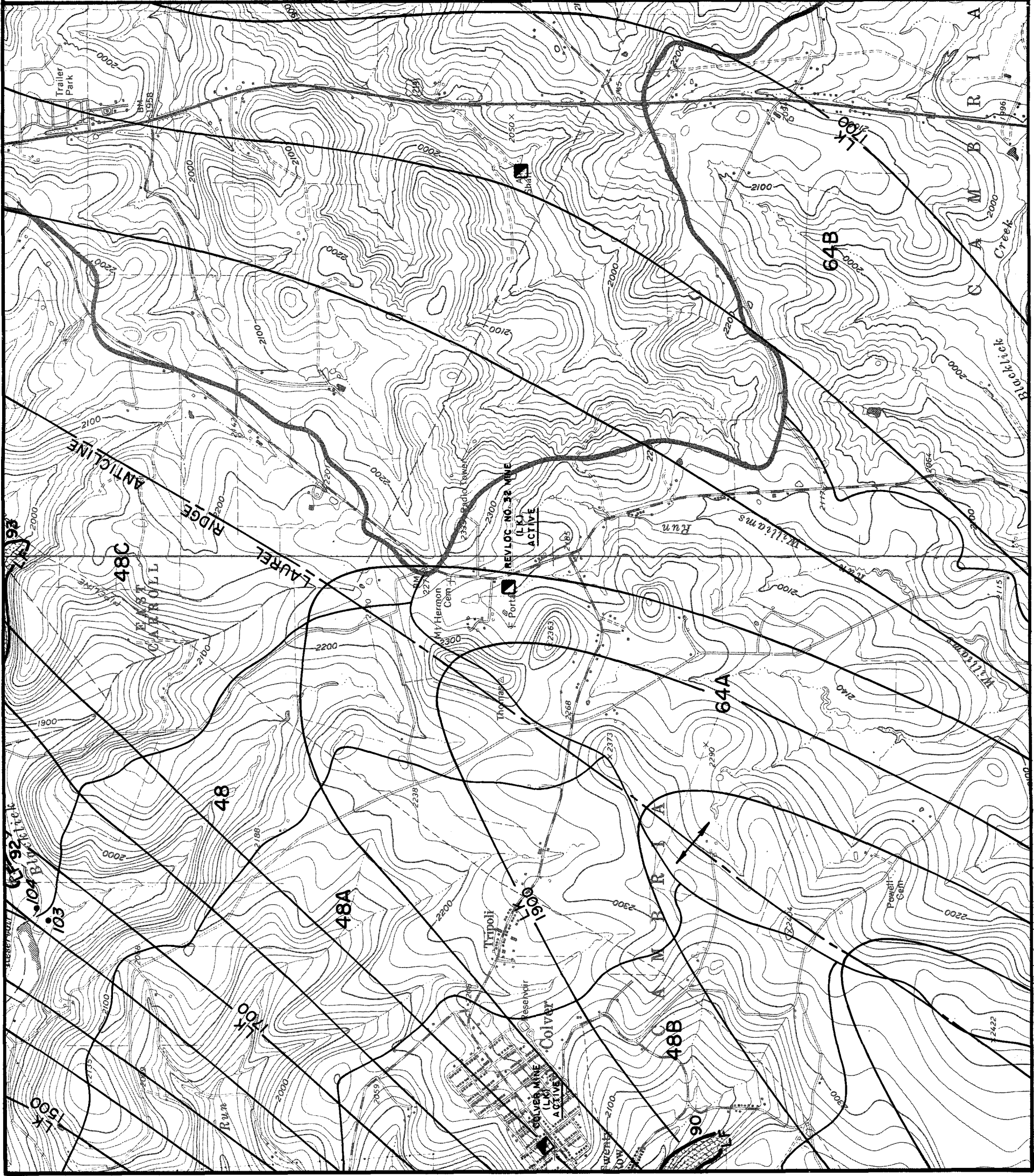
**L E G E N D**

	SURFACE MINE											
	COAL WASTE											
	DRIFT MINE											
	SLOPE MINE											
	MINE SHAFT											
	DISCHARGE FROM MINE OPENING											
	STRUCTURE CONTOUR											
	STRUCTURAL AXIS											
	EXTENT OF DEEP MINING (AVAILABLE INFORMATION) WITHIN MULTIPLE SEAMS											
	PGH - PITTSBURGH											
	UF - UPPER FREEPORT											
		WATERSHED DIVIDE		SUB - BASIN DIVIDE		SUB - BASIN NUMBER		WATER QUALITY SAMPLING STATION (4895, 5125 AND OTHER FOUR DIGIT NUMBERS ARE EPA STATIONS)		COAL PREPARATION PLANT		MINE DRAINAGE TREATMENT PLANT
	WATERSHED DIVIDE											
	SUB - BASIN DIVIDE											
	SUB - BASIN NUMBER											
	WATER QUALITY SAMPLING STATION (4895, 5125 AND OTHER FOUR DIGIT NUMBERS ARE EPA STATIONS)											
	COAL PREPARATION PLANT											
	MINE DRAINAGE TREATMENT PLANT											

0 1/2 1  
SCALE IN MILES

**COMMONWEALTH OF PENNSYLVANIA**  
**DEPARTMENT OF ENVIRONMENTAL RESOURCES**  
**OPERATION SCARLIFT PROJECT SL 185**  
**BLACKLICK CREEK WATERSHED**  
 Cambria & Indiana Counties  
**COAL MINING INVENTORY**

SHEET 20 of 27  
 SEPT. 1974



**L E G E N D**

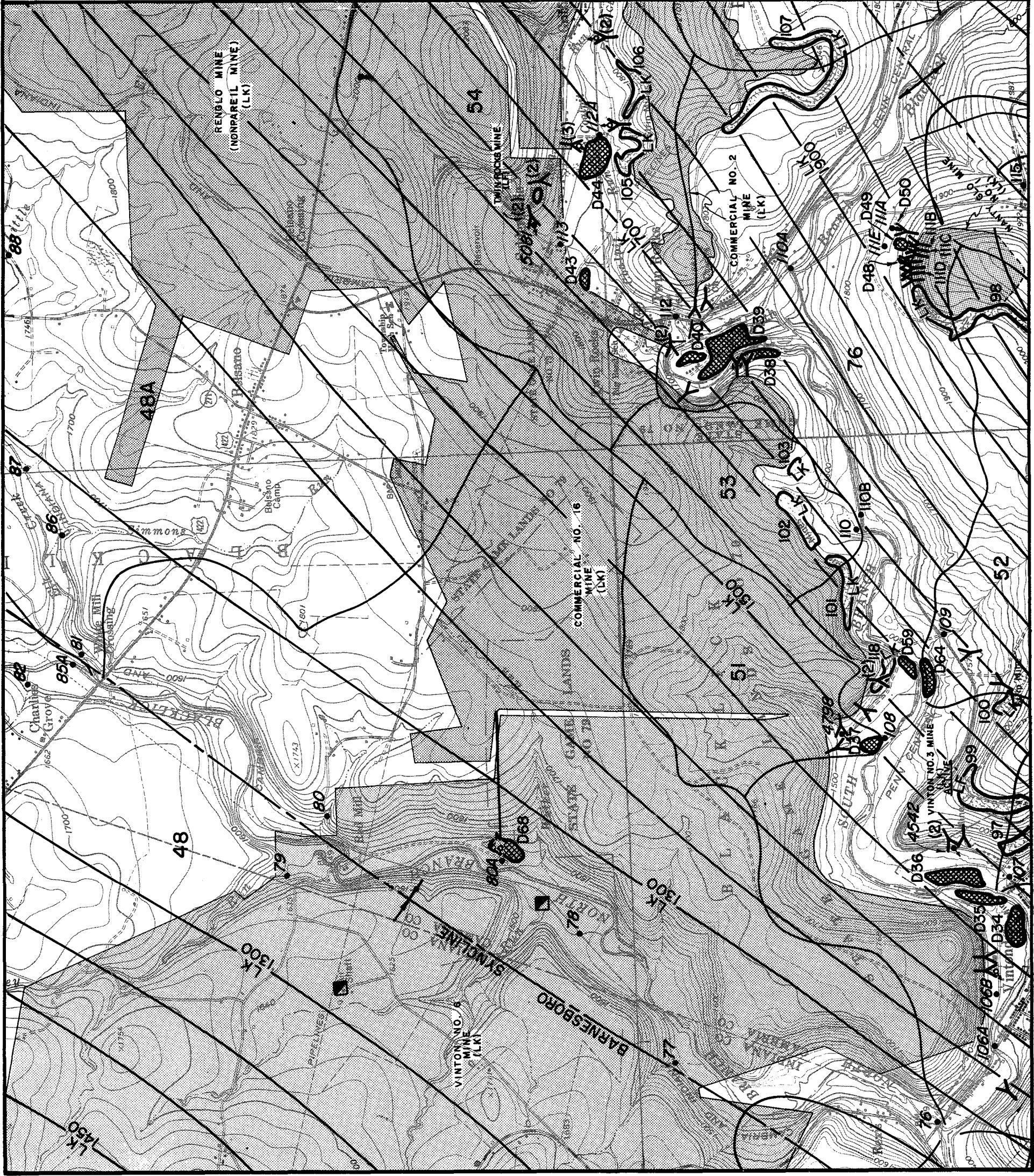
	SURFACE MINE
	COAL WASTE
	DRIFT MINE
	SLOPE MINE
	MINE SHAFT
	DISCHARGE FROM MINE OPENING
	STRUCTURE CONTOUR
	STRUCTURAL AXIS
	EXTENT OF DEEP MINING (AVAILABLE INFORMATION) WITHIN MULTIPLE SEAMS
	PGH - PITTSBURGH
	UF - UPPER FREEPORT
	LF - LOWER FREEPORT
	UK - UPPER KITTANNING
	MK - MIDDLE KITTANNING
	LK - LOWER KITTANNING
	WATERSHED DIVIDE
	SUB-BASIN DIVIDE
	26,48A
	21,46C
	COAL PREPARATION PLANT
	MINE DRAINAGE TREATMENT PLANT

SCALE IN MILES  
0 1/2 1

**COMMONWEALTH OF PENNSYLVANIA**  
**DEPARTMENT OF ENVIRONMENTAL RESOURCES**  
**OPERATION SCARLIFT PROJECT SL 185**  
**BLACKLICK CREEK WATERSHED**  
 Cambria & Indiana Counties  
**COAL MINING INVENTORY**

SEPT. 1974

SHEET 21 of 27



**L E G E N D**

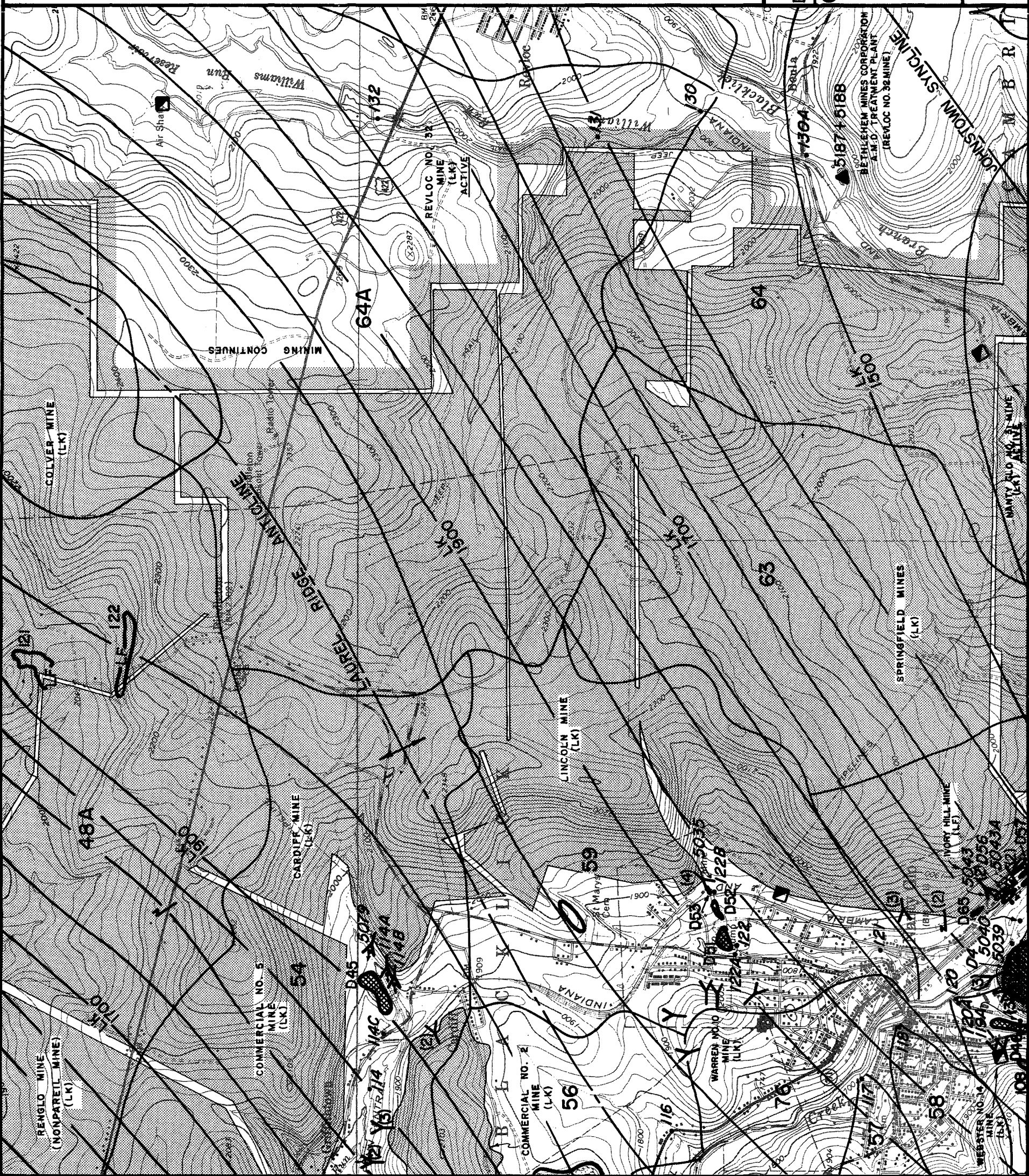
	SURFACE MINE
	COAL WASTE
	DRIFT MINE
	SLOPE MINE
	MINE SHAFT
	DISCHARGE FROM MINE OPENING
	STRUCTURE CONTOUR
	STRUCTURAL AXIS
	EXTENT OF DEEP MINING (AVAILABLE INFORMATION) WITHIN MULTIPLE SEAMS
	ANTICLINE
	SYNCLINE
	WATERSHED DIVIDE
	SUB-BASIN DIVIDE
	SUB-BASIN NUMBER
	WATER QUALITY SAMPLING STATION (4895, 5125 AND OTHER FOUR DIGIT NUMBERS ARE EPA STATIONS)
	COAL PREPARATION PLANT
	MINE DRAINAGE TREATMENT PLANT

SCALE IN MILES  
0 1/2 1

**COMMONWEALTH OF PENNSYLVANIA**  
**DEPARTMENT OF ENVIRONMENTAL RESOURCES**  
**OPERATION SCARLIFT PROJECT SL 185**  
**BLACKLICK CREEK WATERSHED**  
 Cambria & Indiana Counties  
**COAL MINING INVENTORY**

SHEET 22 of 27  
 SEPT. 1974





**L E G E N D**

- SURFACE MINE
- COAL WASTE
- DRIFT MINE
- SLOPE MINE
- MINE SHAFT
- DISCHARGE FROM MINE OPENING
- STRUCTURE CONTOUR
- STRUCTURAL AXIS

- ANTICLINE
- SYNCLINE
- EXTENT OF DEEP MINING  
(AVAILABLE INFORMATION)  
WITHIN MULTIPLE SEAMS

- PGH—PITTSBURGH
- UF—UPPER FREEPORT
- LF—LOWER FREEPORT

- UK—UPPER KITTANNING
- MK—MIDDLE KITTANNING
- LK—LOWER KITTANNING
- WATERSHED DIVIDE
- SUB-BASIN DIVIDE
- SUB-BASIN NUMBER

- WATER QUALITY SAMPLING STATION  
(4895, 5125 AND OTHER FOUR DIGIT  
NUMBERS ARE EPA STATIONS)
- COAL PREPARATION PLANT
- MINE DRAINAGE TREATMENT PLANT



**COMMONWEALTH OF PENNSYLVANIA**  
**DEPARTMENT OF ENVIRONMENTAL RESOURCES**  
**OPERATION SCARLIFT PROJECT SL 185**  
**BLACKLICK CREEK WATERSHED**  
 Cambria & Indiana Counties  
**COAL MINING INVENTORY**

**L E G E N D**

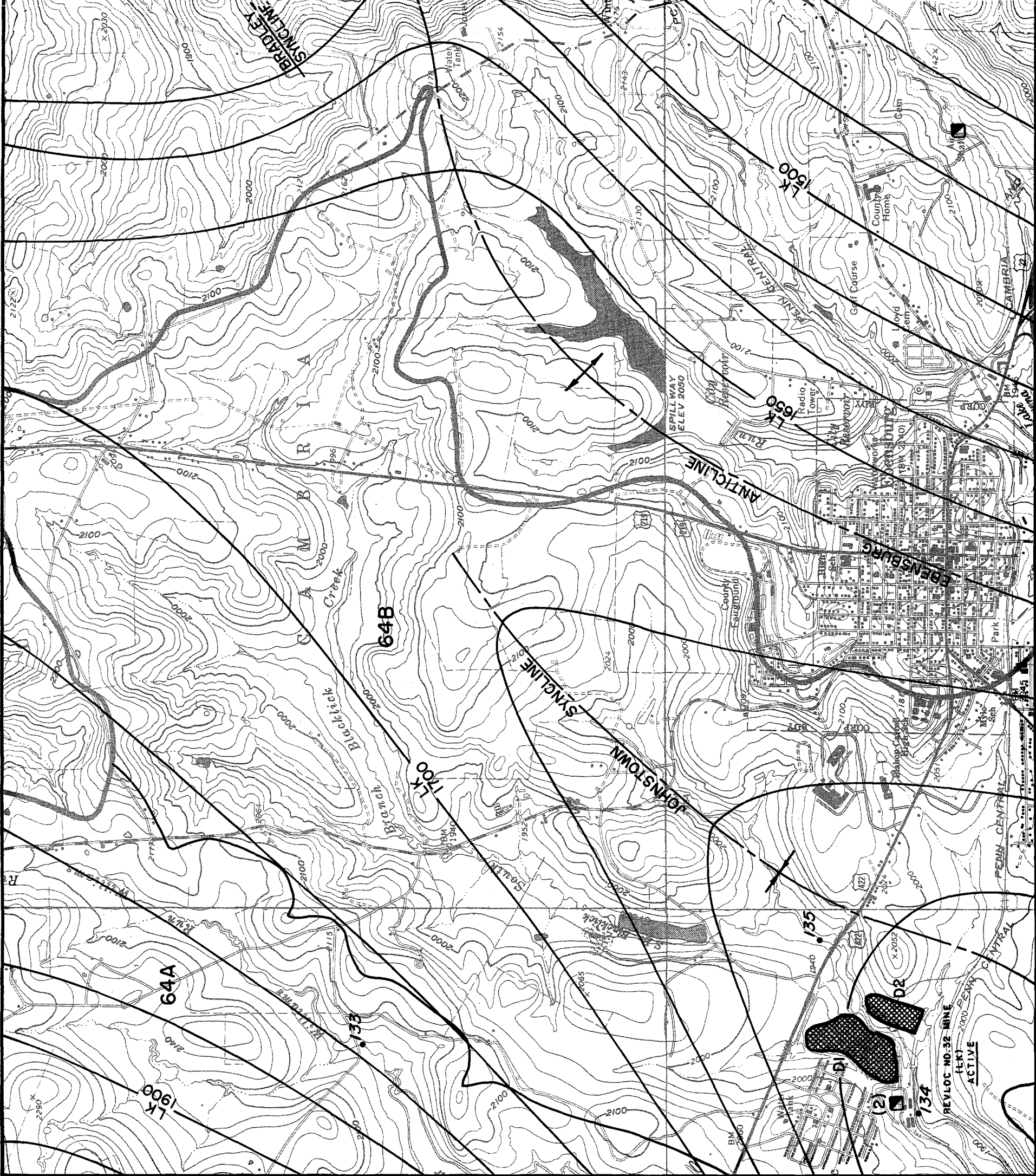
- SURFACE MINE
- COAL WASTE
- DRIFT MINE
- SLOPE MINE
- MINE SHAFT
- DISCHARGE FROM MINE OPENING
- STRUCTURE CONTOUR
- STRUCTURAL AXIS
- EXTENT OF DEEP MINING  
(AVAILABLE INFORMATION)  
WITHIN MULTIPLE SEAMS

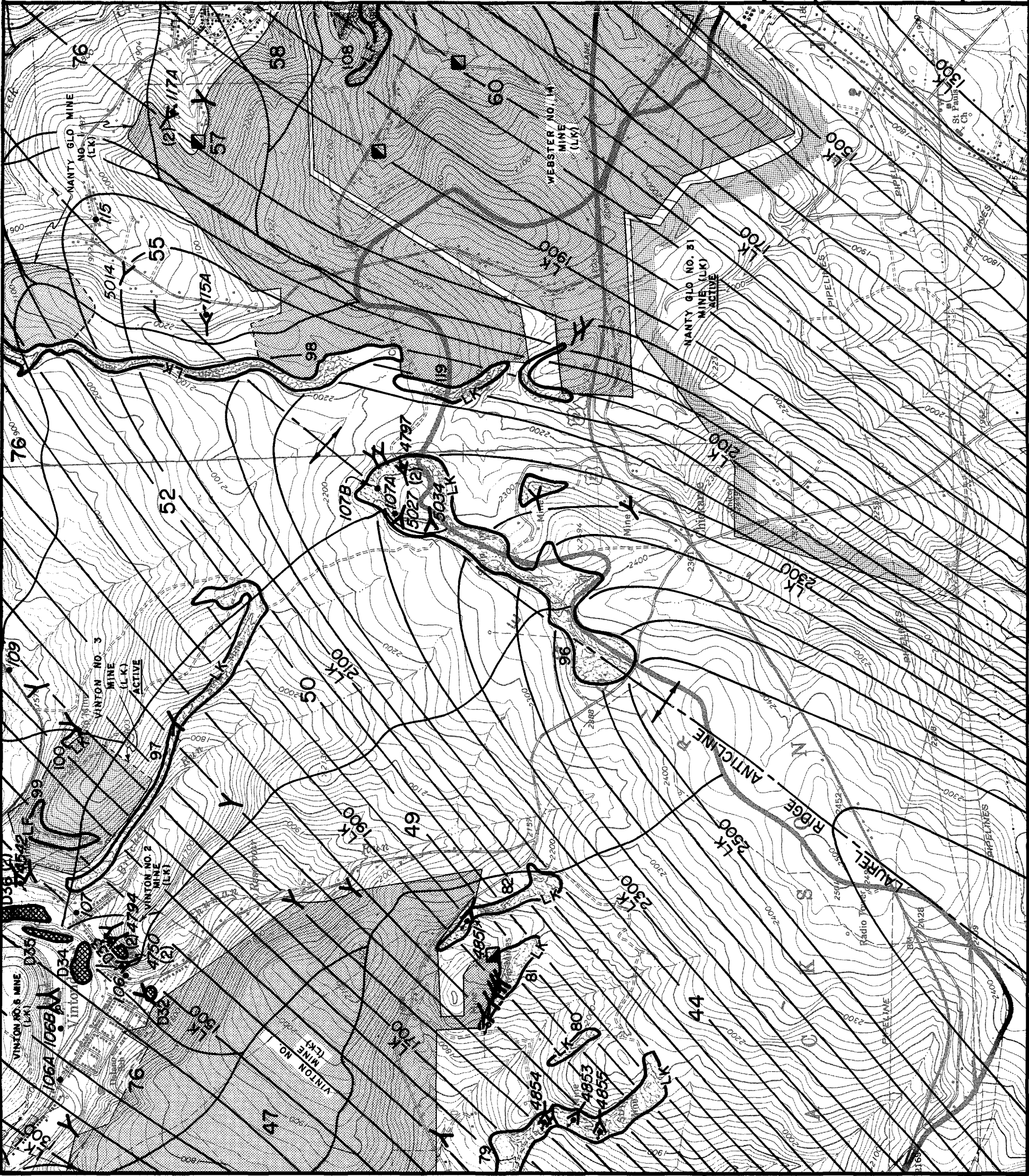
- PGH—PITTSBURGH UK—UPPER KITTANNING
- UF—UPPER FREEPORT MK—MIDDLE KITTANNING
- LF—LOWER FREEPORT LK—LOWER KITTANNING
- WATERSHED DIVIDE
- SUB-BASIN DIVIDE
- SUB-BASIN NUMBER
- WATER QUALITY SAMPLING STATION  
(4895, 5125 AND OTHER FOUR DIGIT  
NUMBERS ARE EPA STATIONS)
- COAL PREPARATION PLANT
- MINE DRAINAGE TREATMENT PLANT



**COMMONWEALTH OF PENNSYLVANIA**  
**DEPARTMENT OF ENVIRONMENTAL RESOURCES**  
**OPERATION SCARLIFT PROJECT SL 185**  
**BLACKLICK CREEK WATERSHED**  
 Cambria & Indiana Counties  
**COAL MINING INVENTORY**

**SHEET 24 of 27**  
 SEPT. 1974





L E G E N D

- SURFACE MINE
- COAL WASTE
- DRIFT MINE
- SLOPE MINE
- MINE SHAFT
- DISCHARGE FROM MINE OPENING
- STRUCTURE CONTOUR
- STRUCTURAL AXIS
- EXTENT OF DEEP MINING (AVAILABLE INFORMATION) WITHIN MULTIPLE SEAMS
- ANTICLINE
- SYNCLINE
- WATERSHED DIVIDE
- SUB-BASIN DIVIDE
- SUB-BASIN NUMBER
- WATER QUALITY SAMPLING STATION (4895, 5125 AND OTHER FOUR DIGIT NUMBERS ARE EPA STATIONS)
- COAL PREPARATION PLANT
- MINE DRAINAGE TREATMENT PLANT

COMMONWEALTH OF PENNSYLVANIA  
 DEPARTMENT OF ENVIRONMENTAL RESOURCES  
 OPERATION SCARLICK PROJECT SL 185  
 BLACKLICK CREEK WATERSHED  
 Cambria & Indiana Counties

COAL MINING INVENTORY

SEPT. 1974

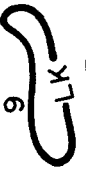






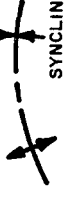
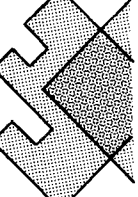
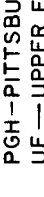
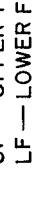




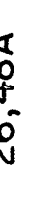
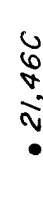




SHEET 25 of 27



26,48A

• 21,46C

L E G E N D

-  SURFACE MINE
-  COAL WASTE
-  DRIFT MINE
-  SLOPE MINE
-  MINE SHAFT
-  DISCHARGE FROM MINE OPENING
-  STRUCTURE CONTOUR
-  STRUCTURAL AXIS
-  EXTENT OF DEEP MINING  
(AVAILABLE INFORMATION)  
WITHIN MULTIPLE SEAMS
-  PGH - PITTSBURGH
-  UF - UPPER FREEPORT
-  LF - LOWER FREEPORT
-  UK - UPPER KITTANNING
-  MK - MIDDLE KITTANNING
-  LF - LOWER KITTANNING
-  WATERSHED DIVIDE
-  SUB-BASIN DIVIDE
-  SUB-BASIN NUMBER
-  WATER QUALITY SAMPLING STATION  
(4895, 5125 AND OTHER FOUR DIGIT  
NUMBERS ARE EPA STATIONS)
-  COAL PREPARATION PLANT
-  MINE DRAINAGE TREATMENT PLANT

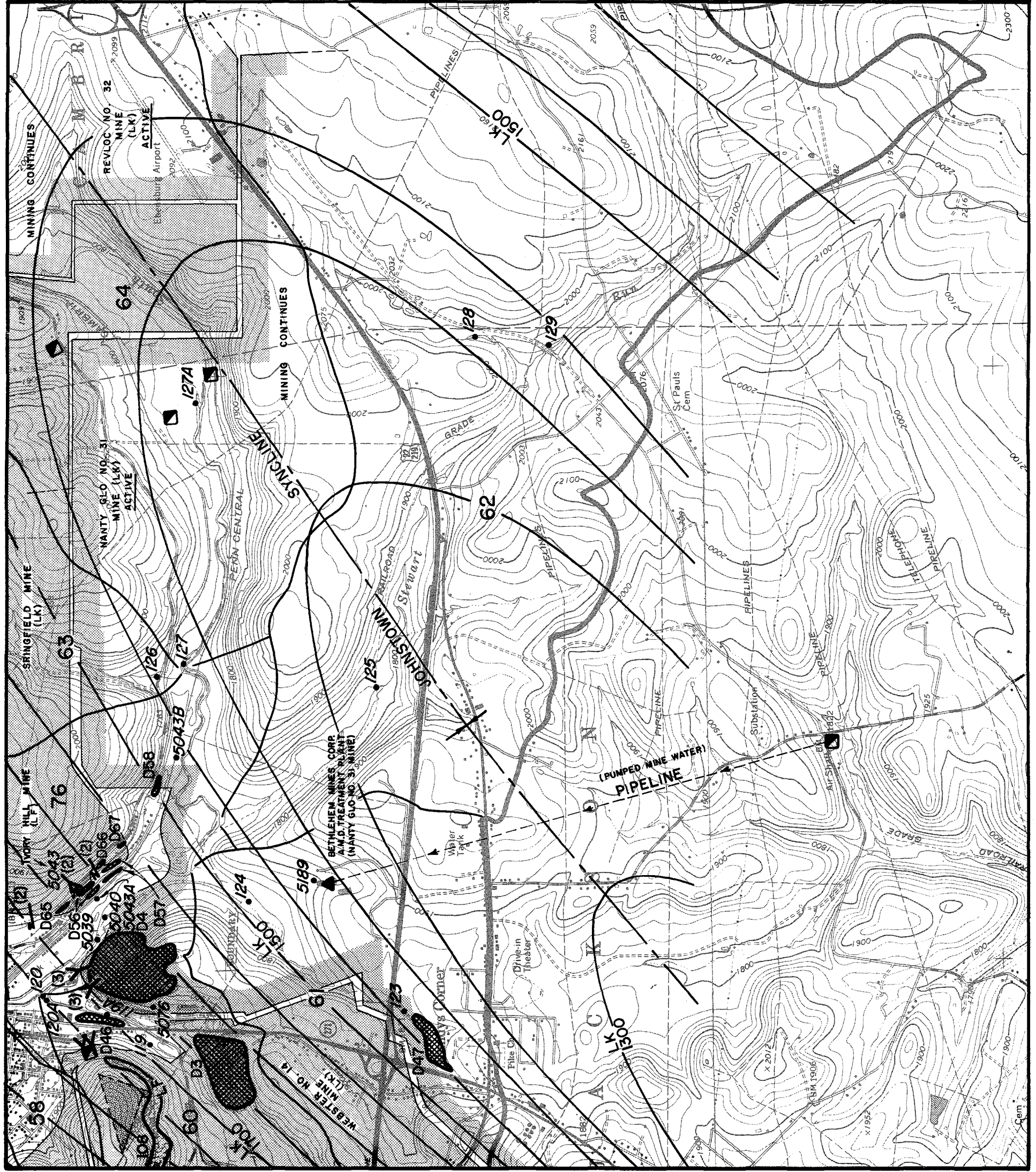


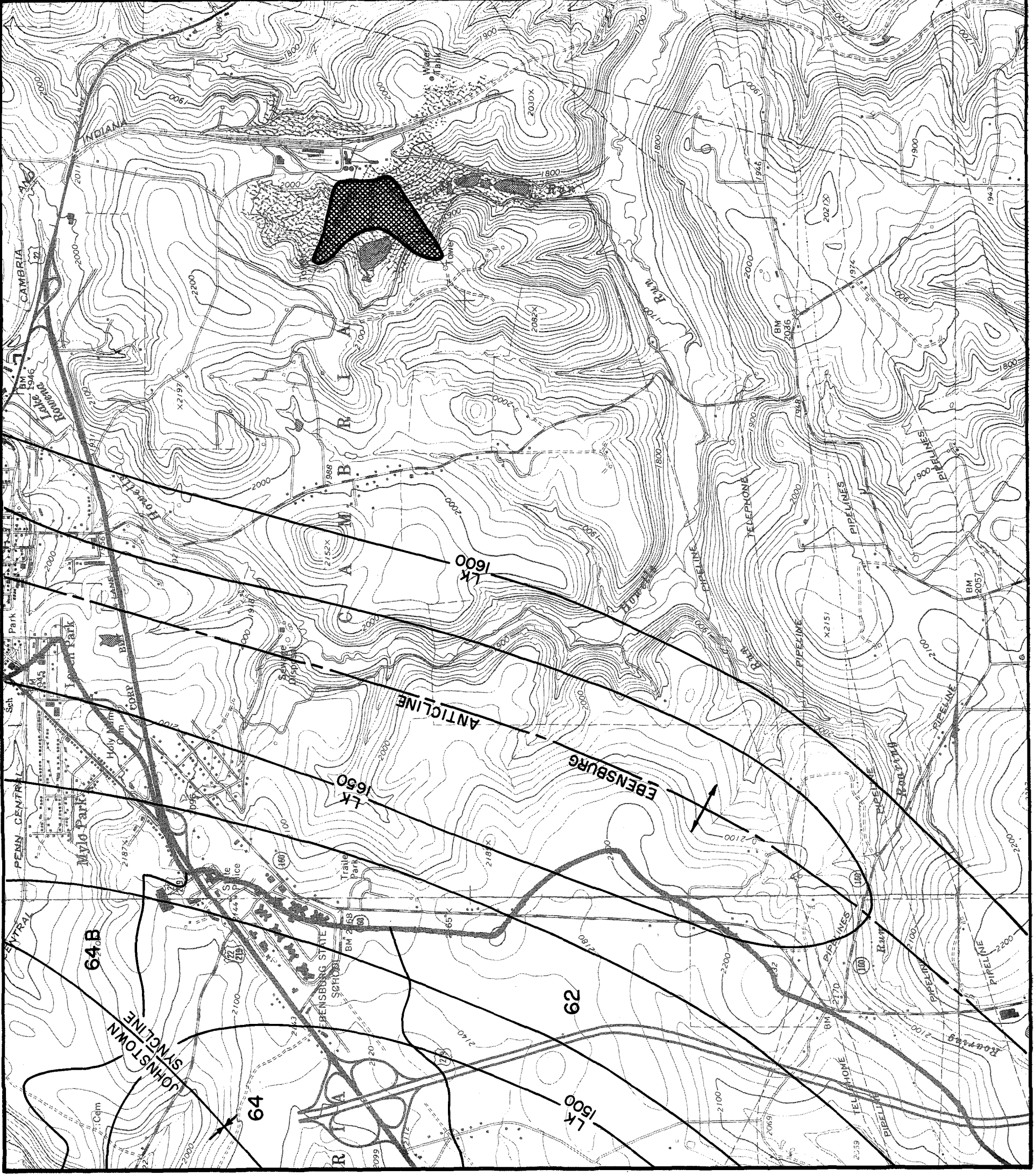
COMMONWEALTH OF PENNSYLVANIA  
 DEPARTMENT OF ENVIRONMENTAL RESOURCES  
 OPERATION SCARLIFT PROJECT SL 185  
 BLACKLICK CREEK WATERSHED  
 Cambria & Indiana Counties

COAL MINING INVENTORY

SEPT. 1974

SHEET 26 of 27





**L E G E N D**

	SURFACE MINE
	COAL WASTE
	DRIFT MINE
	SLOPE MINE
	MINE SHAFT
	DISCHARGE FROM MINE OPENING
	STRUCTURE CONTOUR
	STRUCTURAL AXIS
	EXTENT OF DEEP MINING (AVAILABLE INFORMATION) WITHIN MULTIPLE SEAMS
	ANTICLINE
	SYNCLINE
	WATERSHED DIVIDE
	SUB-BASIN DIVIDE
	SUB-BASIN NUMBER
	WATER QUALITY SAMPLING STATION (4895,5125 AND OTHER FOUR DIGIT NUMBERS ARE EPA STATIONS)
	COAL PREPARATION PLANT
	MINE DRAINAGE TREATMENT PLANT

SCALE IN MILES  
0 1/2 1

**COMMONWEALTH OF PENNSYLVANIA**  
**DEPARTMENT OF ENVIRONMENTAL RESOURCES**  
**OPERATION SCARLIFT PROJECT SL 185**  
**BLACKLICK CREEK WATERSHED**  
 Cambria & Indiana Counties  
**COAL MINING INVENTORY**

**SHEET 27 of 27**

SEPT. 1974