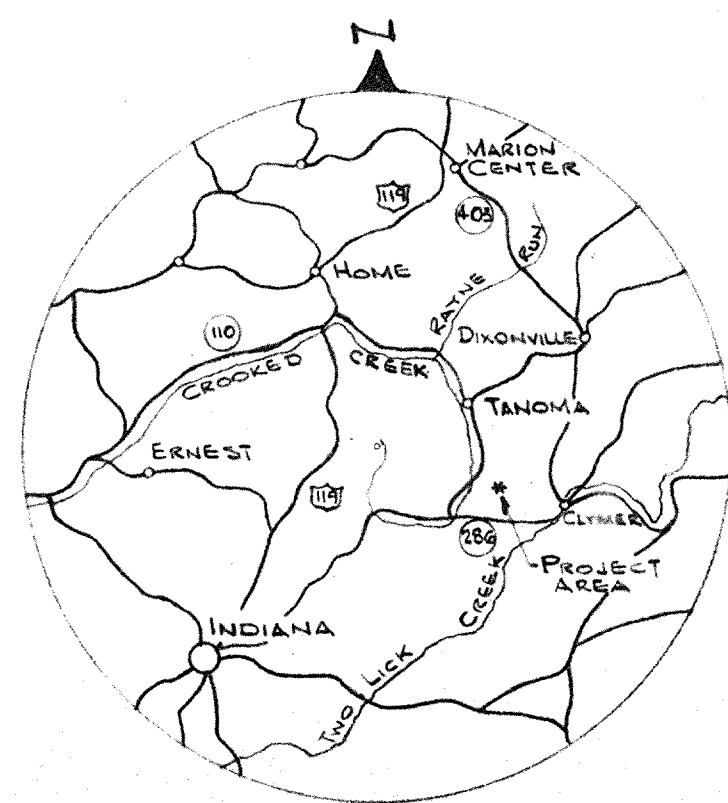


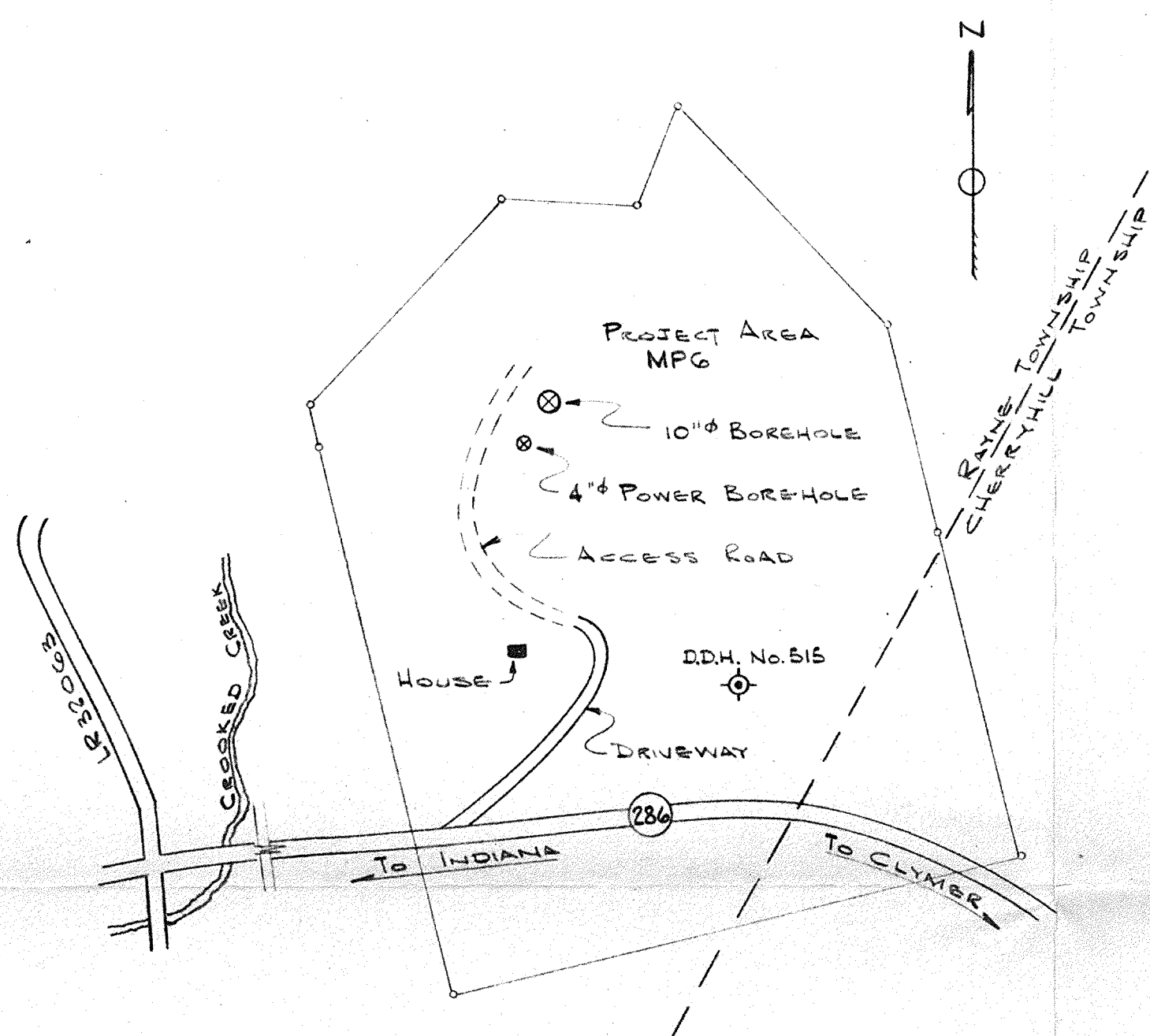
APPENDIX IV

QUICK START PROJECT MP6

Sketch showing procedure used to seal Borehole MP6 and typical section through Clymer No.1 and Clymer No.2 Mines is included in folder immediately following this page.



LOCATION MAP

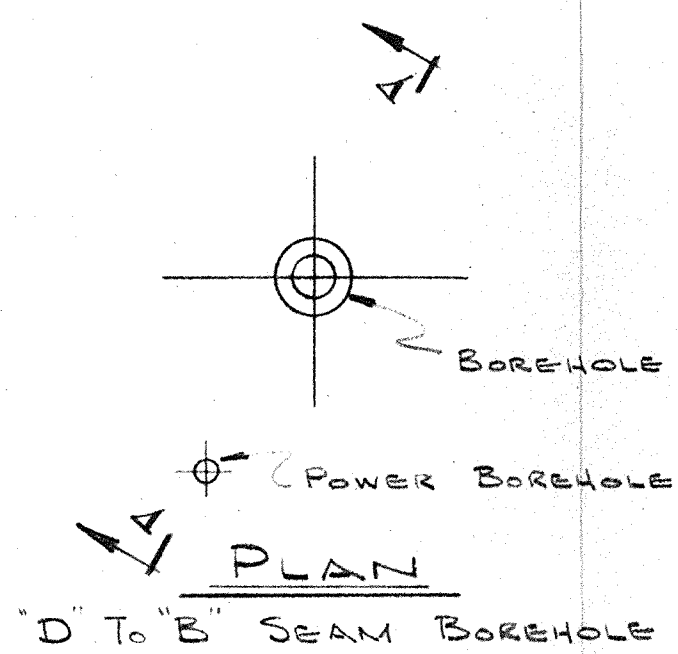


SITE MAP

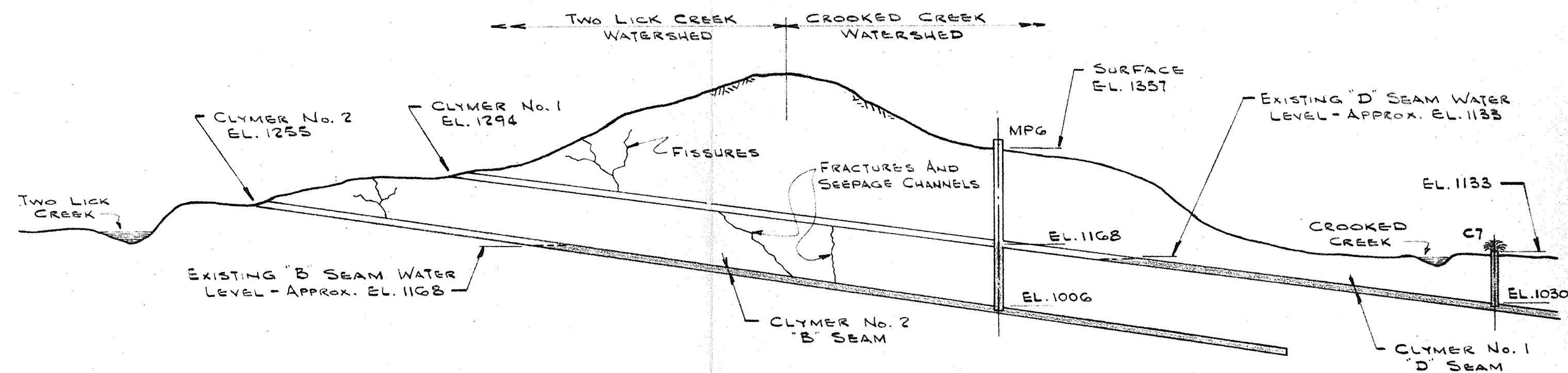
OCA HELMAN PROPERTY
RAYNE TWP, INDIANA COUNTY, PA.

INFORMATION TAKEN FROM C.B.C. RECORDS

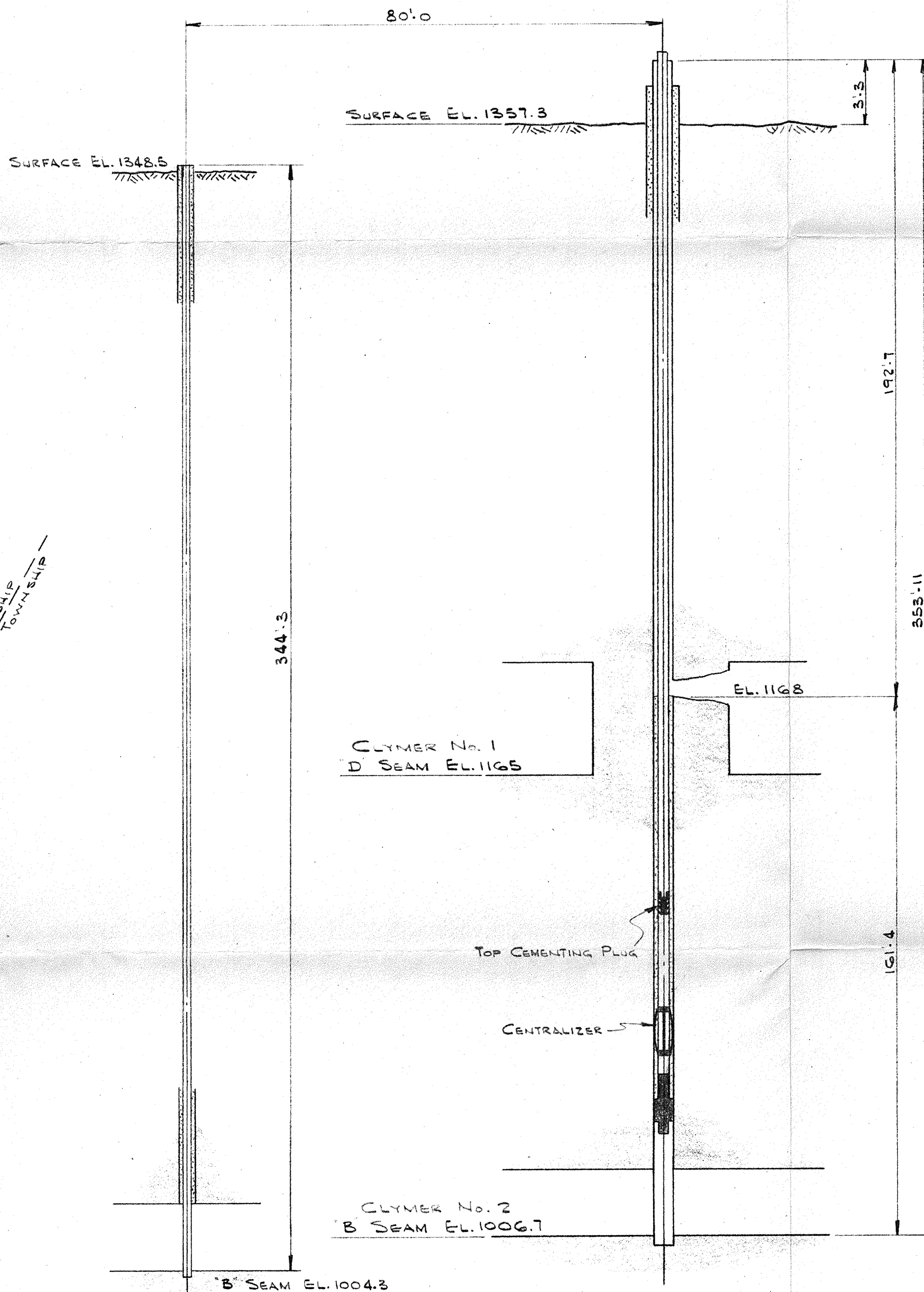
- 14" BOREHOLE - 10" PIPE
- SURFACE EL. 1357.3
- T/CASING EL. 1359.11
- T/10" PIPE EL. 1275.11
- BOT. COAL EL. 1006.7
- BOT. 10" PIPE EL. 1005.8
- 6 1/4" BOREHOLE - 4" PIPE (PEH)
- SURFACE EL. 1348.5
- BOT. GROUT EL. 1007.7
- ROOF EL. 1007.6
- BOT. COAL EL. 1004.3
- BOT. HOLE EL. 1003.8



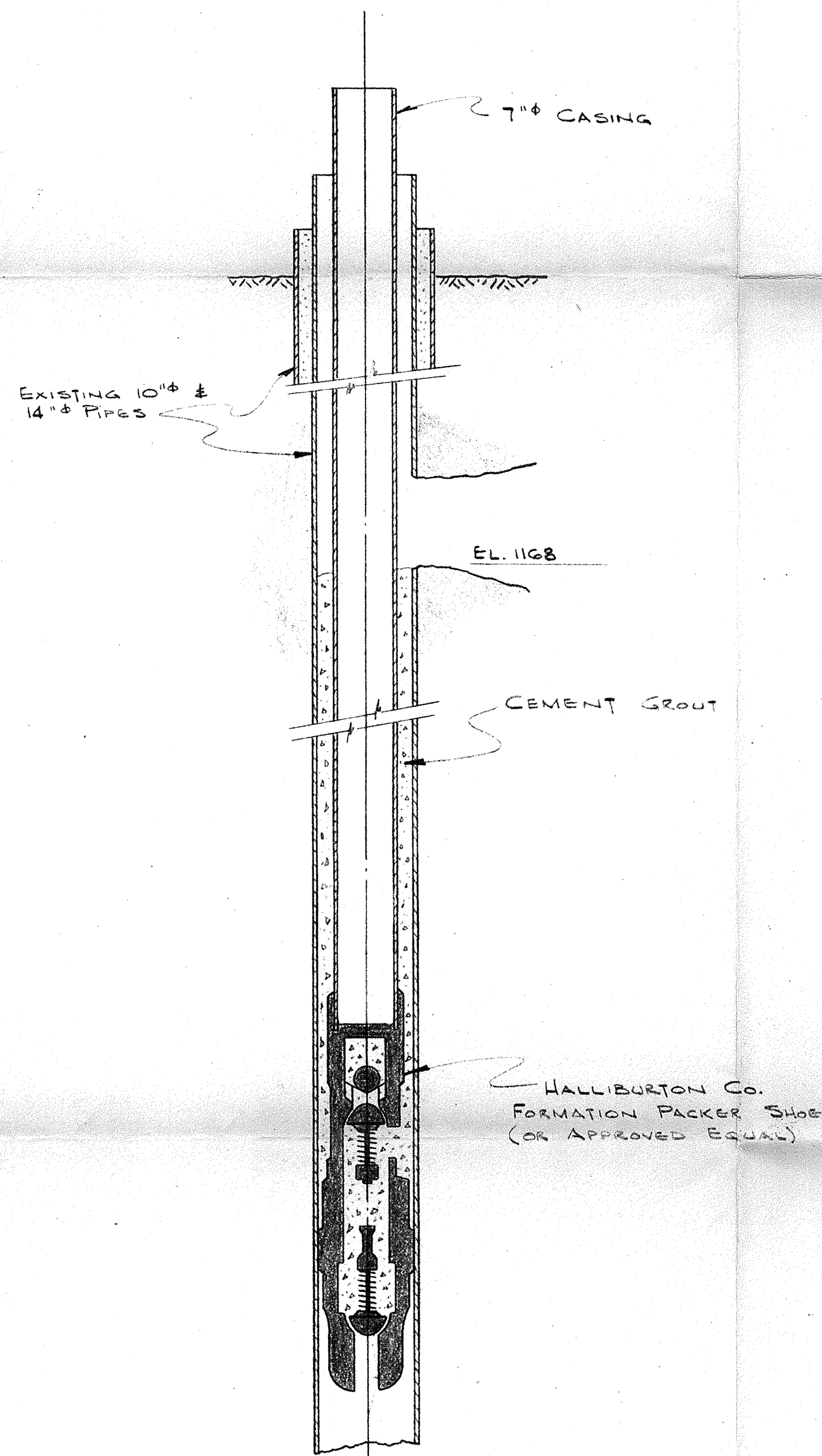
PLAN
"D" TO "B" SEAM BOREHOLE



TYPICAL CROSS SECTION THRU CLYMER No. 1 & CLYMER No. 2 MINES



SECTION A-A



ENLARGED DETAIL

DIAMOND DRILL HOLE No. 515		
STRATA	DEPTH	TOTAL
SURFACE EL. 1351.56	3' 0"	3' 0"
SHALE GRAY BROKEN	25' 0"	28' 0"
SHALE RED AND GRAY SOFT	1' 8"	29' 8"
SHALE GRAY SANDY	13' 4"	43' 0"
CLAY SHALY SOFT	4' 6"	47' 6"
SHALE GRAY	1' 10"	49' 4"
SHALE GRAY SANDY	14' 6"	63' 10"
SHALE AND SLATE SOFT	13' 0"	76' 10"
COAL AND FIRE CLAY MIXED	0' 4"	77' 2"
CLAY SOFT	1' 0"	78' 2"
SHALE GRAY	1' 4"	79' 6"
LIMESTONE	4' 6"	84' 0"
SHALE LIME SOFT LIGHT MIXED	14' 0"	98' 0"
SHALE AND CLAY DARK SOFT	9' 6"	107' 6"
SANDSTONE	5' 6"	113' 0"
SHALE GRAY	19' 0"	132' 0"
SANDSTONE	3' 2"	135' 2"
SHALE GRAY SANDY	4' 4"	139' 6"
SANDSTONE	3' 0"	142' 6"
COAL "D" SEAM EL. 1186.6	4' 6"	147' 0"
CLAY SOFT	4' 4"	151' 4"
CLAY SHALE	7' 3"	158' 7"
SHALE SANDY	3' 0"	161' 7"
SHALE CLAY	9' 0"	170' 7"
SHALE DARK SOFT	2' 8"	173' 5"
SHALE GRAY	15' 4"	188' 9"
SHALE DARK SANDY	15' 6"	204' 5"
SANDSTONE	28' 8"	233' 3"
SHALE DARK	1' 4"	234' 7"
COAL BONY	0' 7"	235' 4"
COAL	0' 8"	236' 2"
FIRE CLAY	1' 5"	237' 7"
SANDSTONE DARK WITH SHALE STREAKS	7' 0"	244' 7"
SHALE DARK	1' 10"	245' 8"
COAL	0' 11"	246' 9"
FIRE CLAY SOFT	6' 0"	252' 9"
SHALE GRAY	10' 8"	263' 7"
SANDSTONE	7' 0"	270' 7"
SHALE DARK	25' 1"	295' 8"
SHALE GRAY	5' 1"	300' 9"
COAL "B" SEAM EL. 1036.1	2' 6"	303' 5"
FIRE CLAY	0' 3"	303' 8"
COAL	0' 3"	304' 1"
FIRE CLAY SANDY	2' 9"	311' 0"

DEPARTMENT OF ENVIRONMENTAL RESOURCES
BUREAU OF PLANNING & DEVELOPMENTAL RESEARCH
HARRISBURG, PENNSYLVANIA 17120

TANOMA COMPLEX, UPPER CROOKED CREEK
INDIANA COUNTY, PENNSYLVANIA

INSTALLATION OF SEAL AT BOREHOLE MPG

PREPARED BY
MCDONALD/PHILLIPS ENG. INC.
850 RIDGE AVE PAH, PA. 15212

DRAWN BY M.S. DATE 5-16-73 DRAWING NO.
CHECKED BY J.B.M. SCALE: NONE SL107-G-1