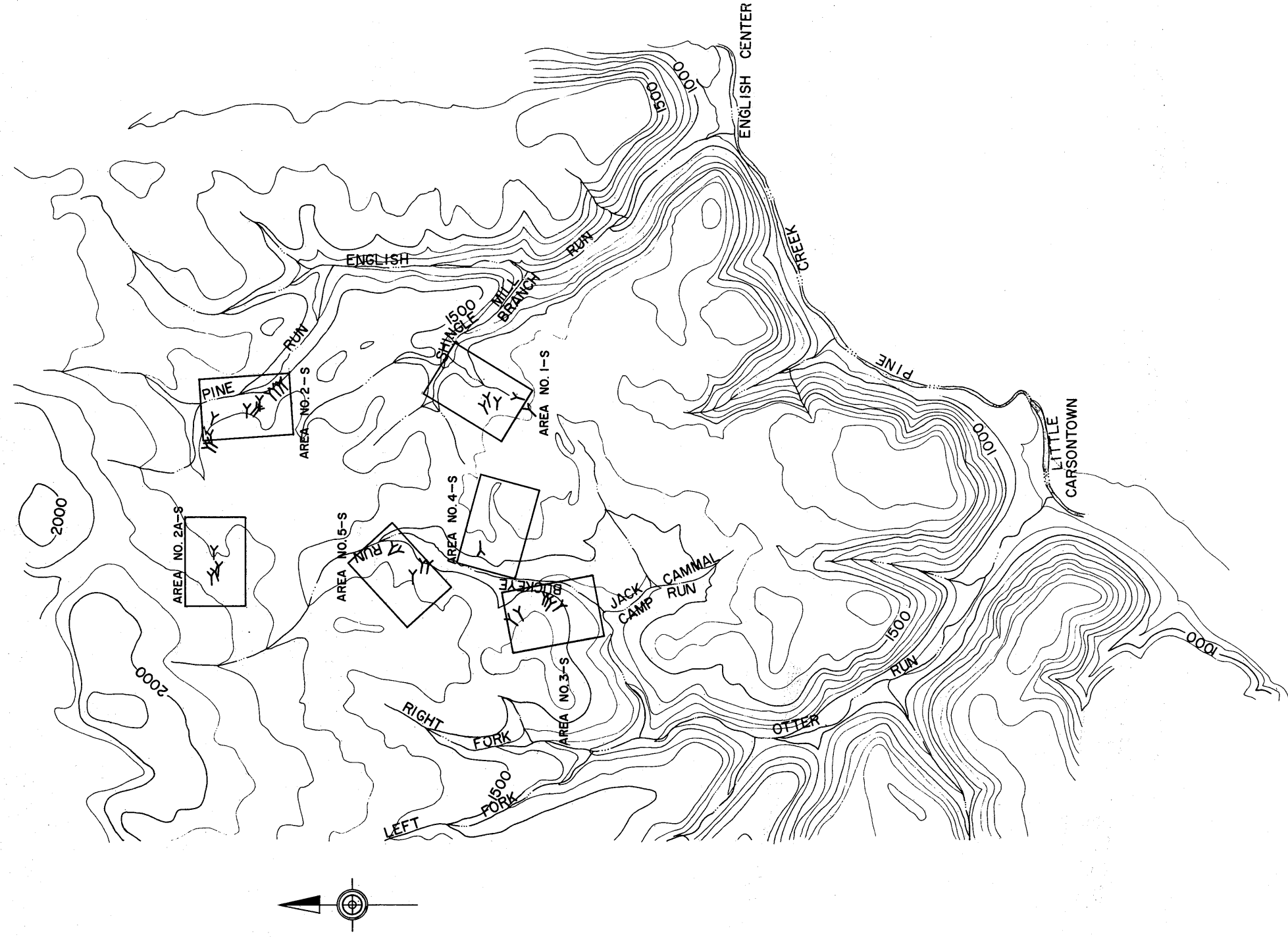


APPENDIX (B)

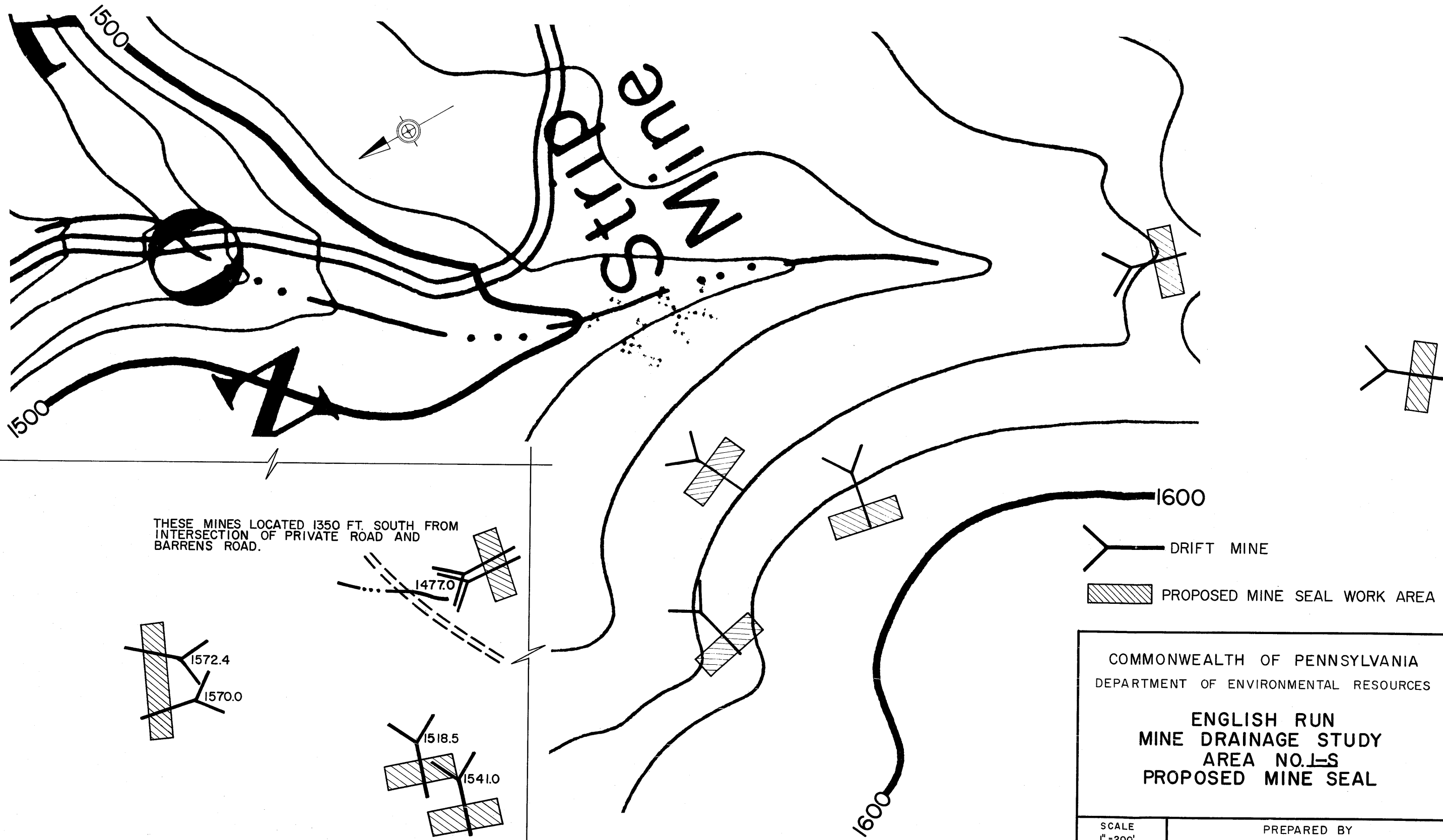


COMMONWEALTH OF PENNSYLVANIA
 DEPARTMENT OF ENVIRONMENTAL RESOURCES

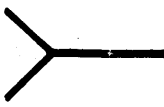

**ENGLISH RUN
 MINE DRAINAGE STUDY
 PROPOSED MINE SEAL INDEX**

SCALE
 1"=4000'
 OCT. 1971

PREPARED BY
 ENGLISH ENGINEERING CORP.
 WILLIAMSPORT, PENNSYLVANIA



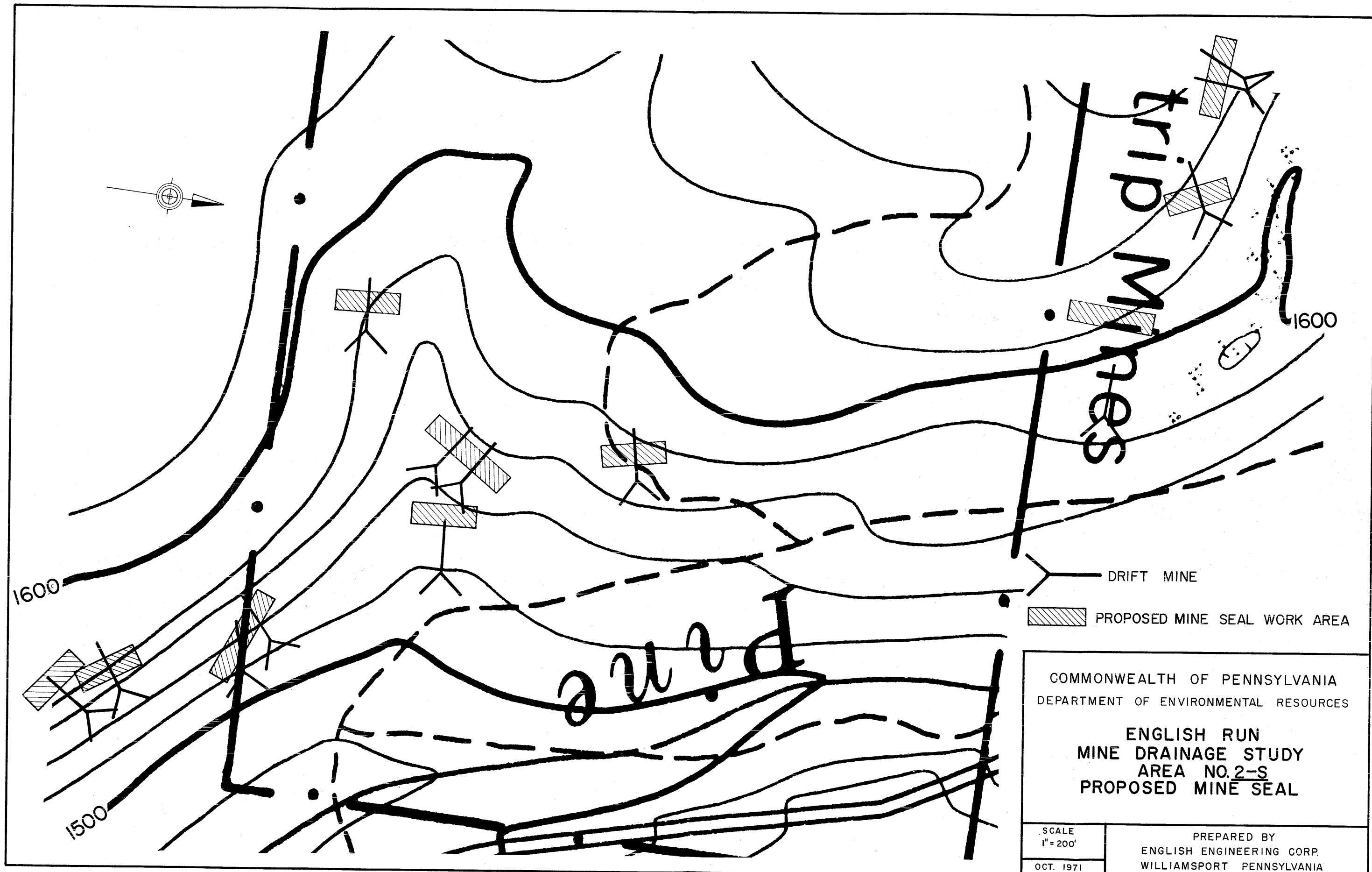
THESE MINES LOCATED 1350 FT. SOUTH FROM INTERSECTION OF PRIVATE ROAD AND BARRENS ROAD.

-  DRIFT MINE
-  PROPOSED MINE SEAL WORK AREA

COMMONWEALTH OF PENNSYLVANIA
DEPARTMENT OF ENVIRONMENTAL RESOURCES

**ENGLISH RUN
MINE DRAINAGE STUDY
AREA NO. 1-S
PROPOSED MINE SEAL**

SCALE 1" = 200'	PREPARED BY ENGLISH ENGINEERING CORP. WILLIAMSPORT, PENNSYLVANIA
OCT. 1971	



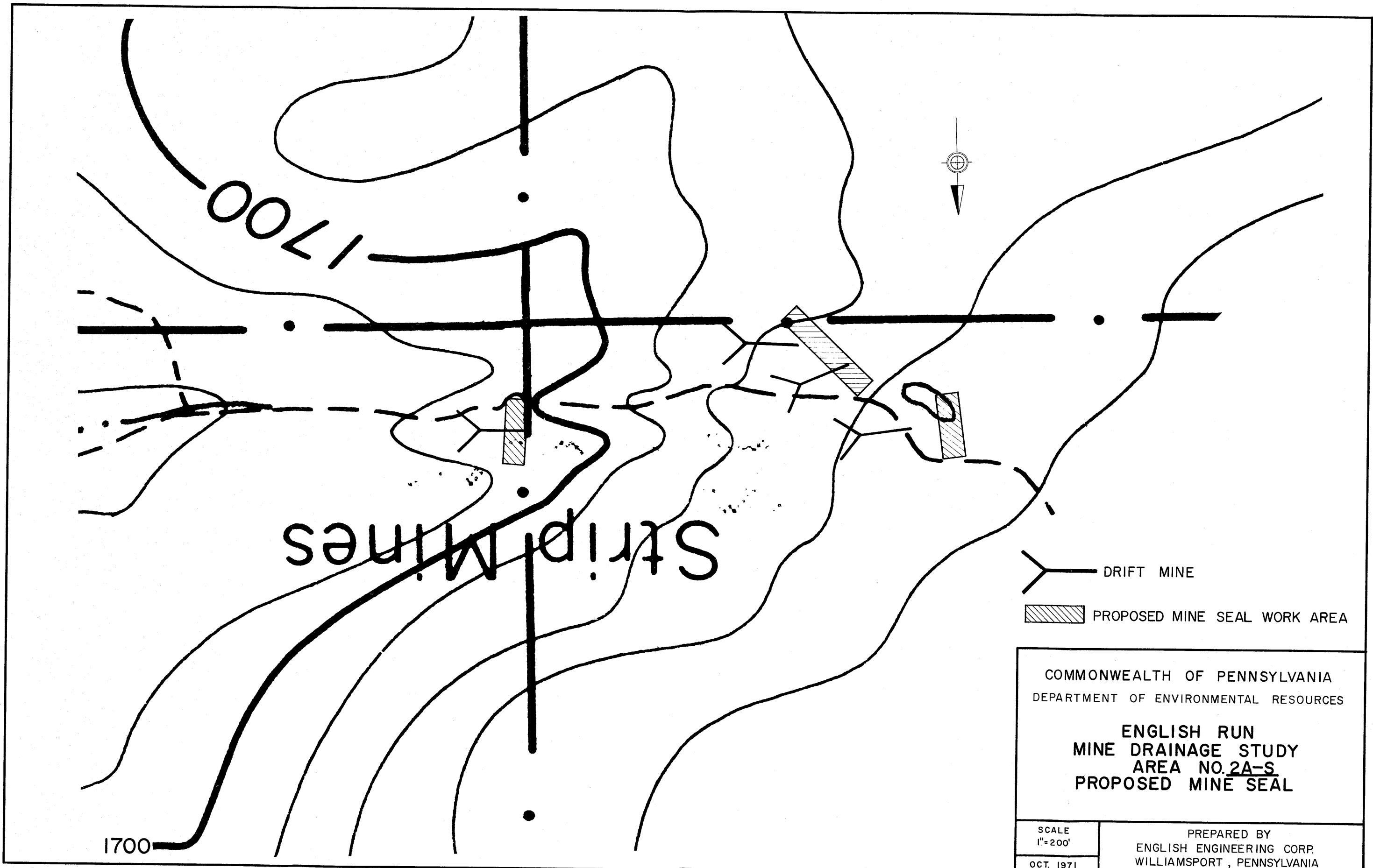
COMMONWEALTH OF PENNSYLVANIA
 DEPARTMENT OF ENVIRONMENTAL RESOURCES

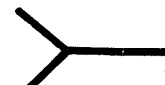

ENGLISH RUN
 MINE DRAINAGE STUDY
 AREA NO. 2-S
 PROPOSED MINE SEAL

SCALE
 1" = 200'

OCT. 1971

PREPARED BY
 ENGLISH ENGINEERING CORP.
 WILLIAMSPORT PENNSYLVANIA



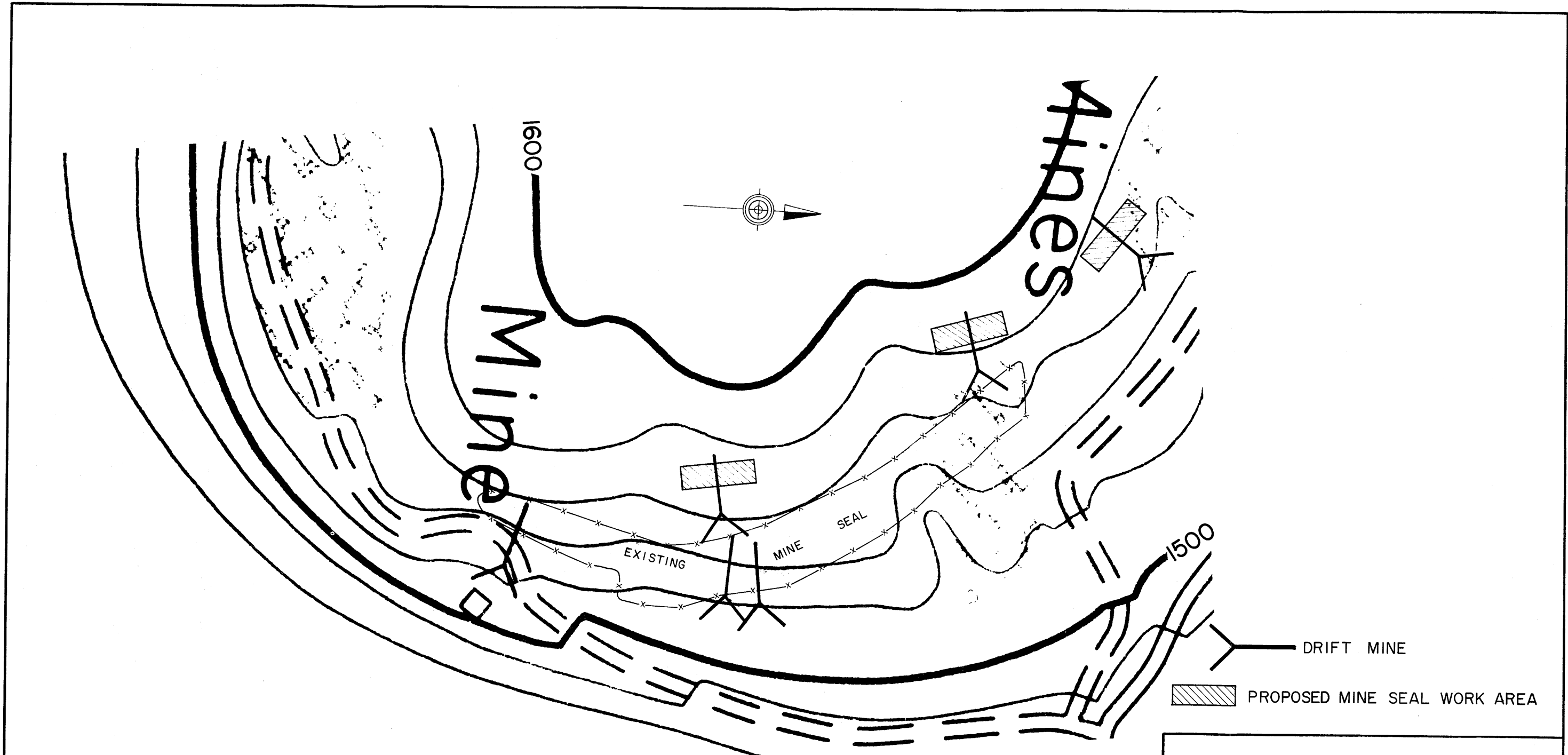
 DRIFT MINE
 PROPOSED MINE SEAL WORK AREA

COMMONWEALTH OF PENNSYLVANIA
 DEPARTMENT OF ENVIRONMENTAL RESOURCES

**ENGLISH RUN
 MINE DRAINAGE STUDY
 AREA NO. 2A-S
 PROPOSED MINE SEAL**

SCALE
 1"=200'
 OCT. 1971

PREPARED BY
 ENGLISH ENGINEERING CORP.
 WILLIAMSPORT, PENNSYLVANIA



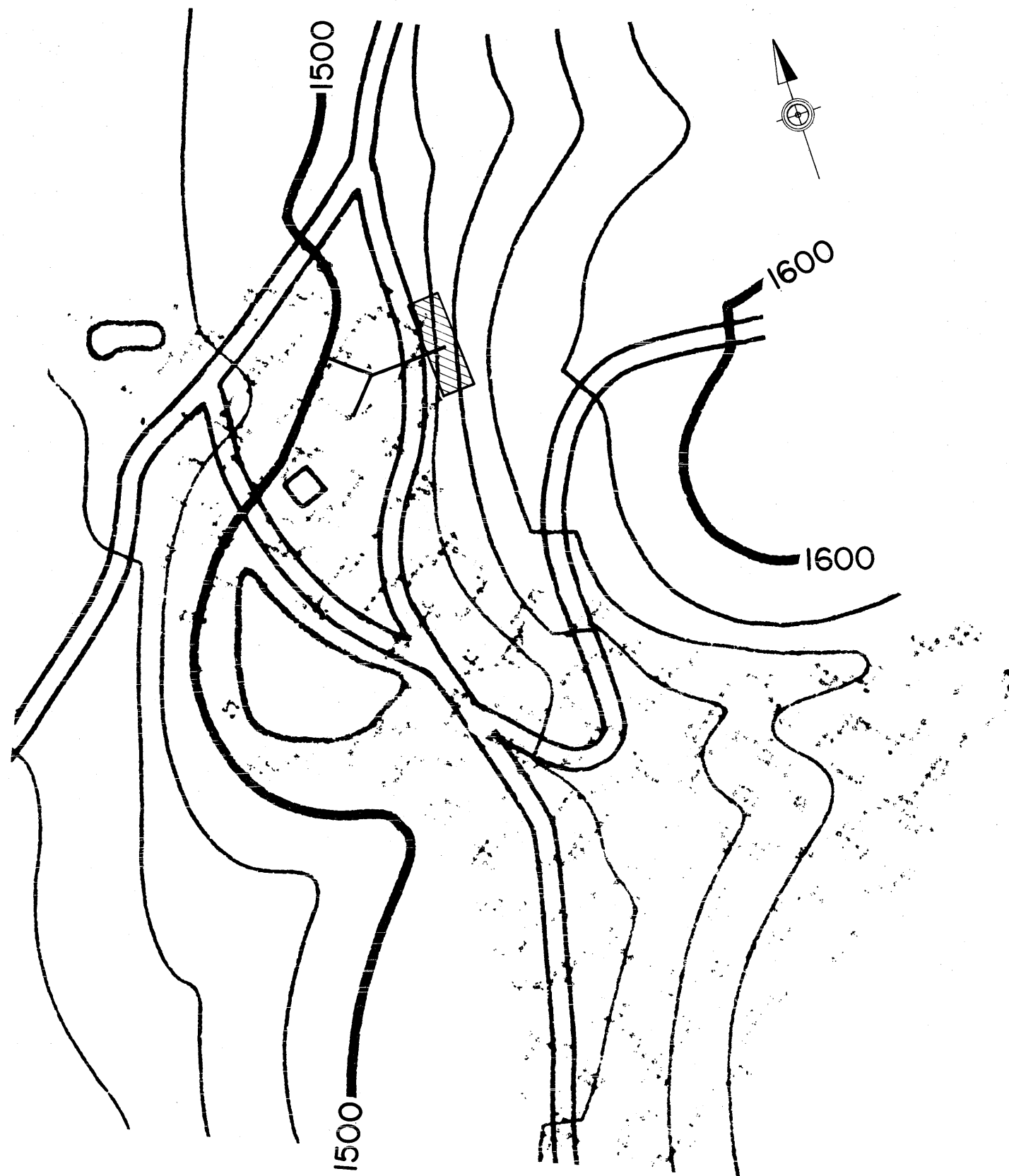
DRIFT MINE

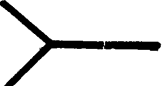
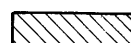
PROPOSED MINE SEAL WORK AREA

COMMONWEALTH OF PENNSYLVANIA
 DEPARTMENT OF ENVIRONMENTAL RESOURCES

**OTTER RUN
 MINE DRAINAGE STUDY
 AREA NO. 3-S
 PROPOSED MINE SEAL**

SCALE 1" = 200'	PREPARED BY ENGLISH ENGINEERING CORP. WILLIAMSPORT, PENNSYLVANIA
OCT. 1971	



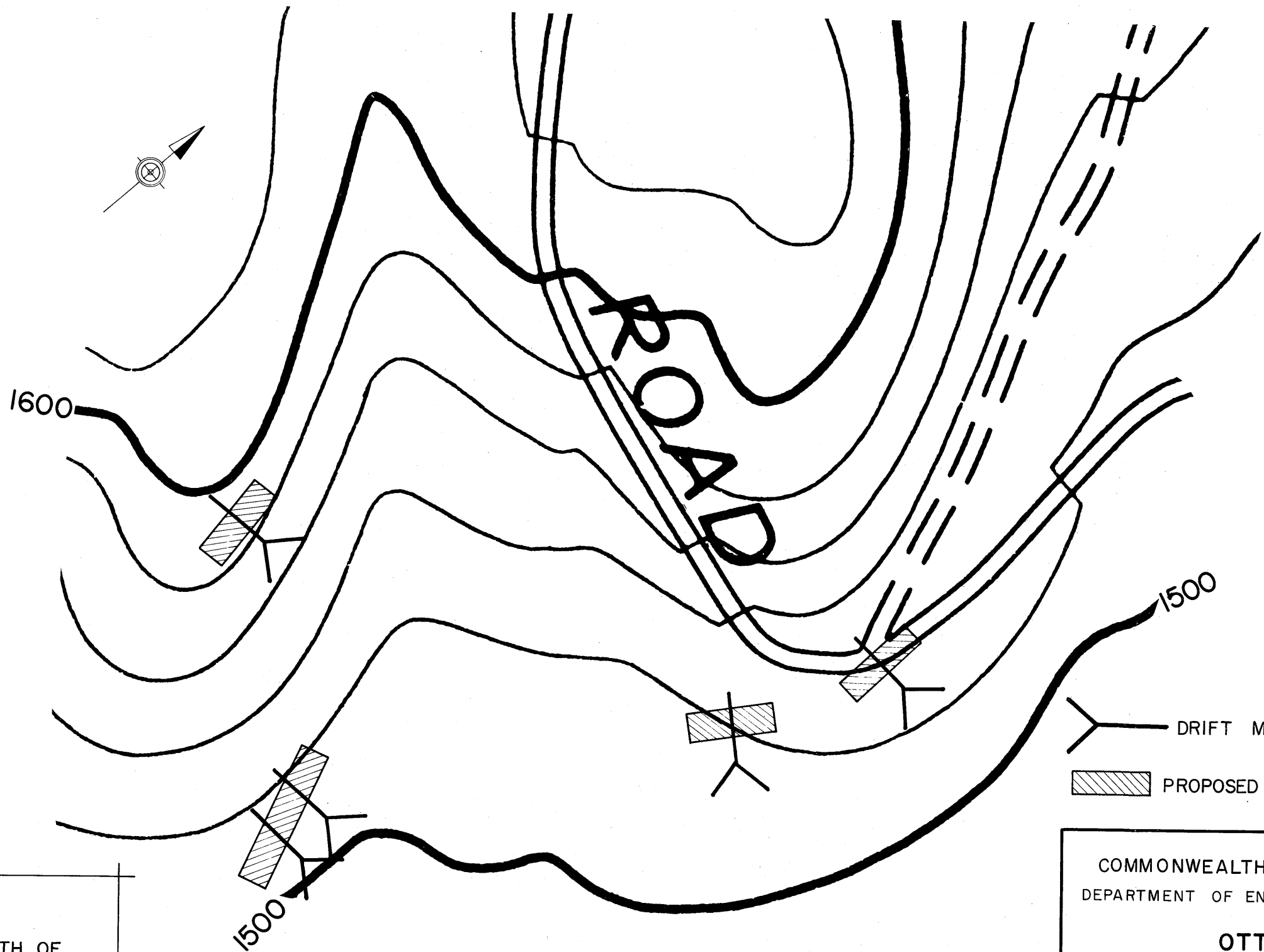
-  DRIFT MINE
-  PROPOSED MINE SEAL WORK AREA

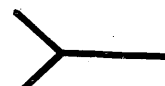

COMMONWEALTH OF PENNSYLVANIA
DEPARTMENT OF ENVIRONMENTAL RESOURCES

**OTTER RUN
MINE DRAINAGE STUDY
AREA NO. 4-S
PROPOSED MINE SEAL**

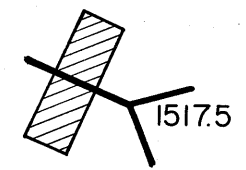
SCALE
1" = 200'
OCT. 1971

PREPARED BY
ENGLISH ENGINEERING CORP.
WILLIAMSPORT, PENNSYLVANIA



-  DRIFT MINE
-  PROPOSED MINE SEAL WORK AREA

THIS MINE 1300 FT. SOUTH OF
TWO ADJACENT MINE



COMMONWEALTH OF PENNSYLVANIA DEPARTMENT OF ENVIRONMENTAL RESOURCES	
OTTER RUN MINE DRAINAGE STUDY AREA NO.5-S PROPOSED MINE SEAL	
SCALE 1" = 200'	PREPARED BY ENGLISH ENGINEERING CORP. WILLIAMSPORT, PENNSYLVANIA
OCT. 1971	