

MATCH TO SHEET NO. 4

MATCH TO SHEET NO. 6

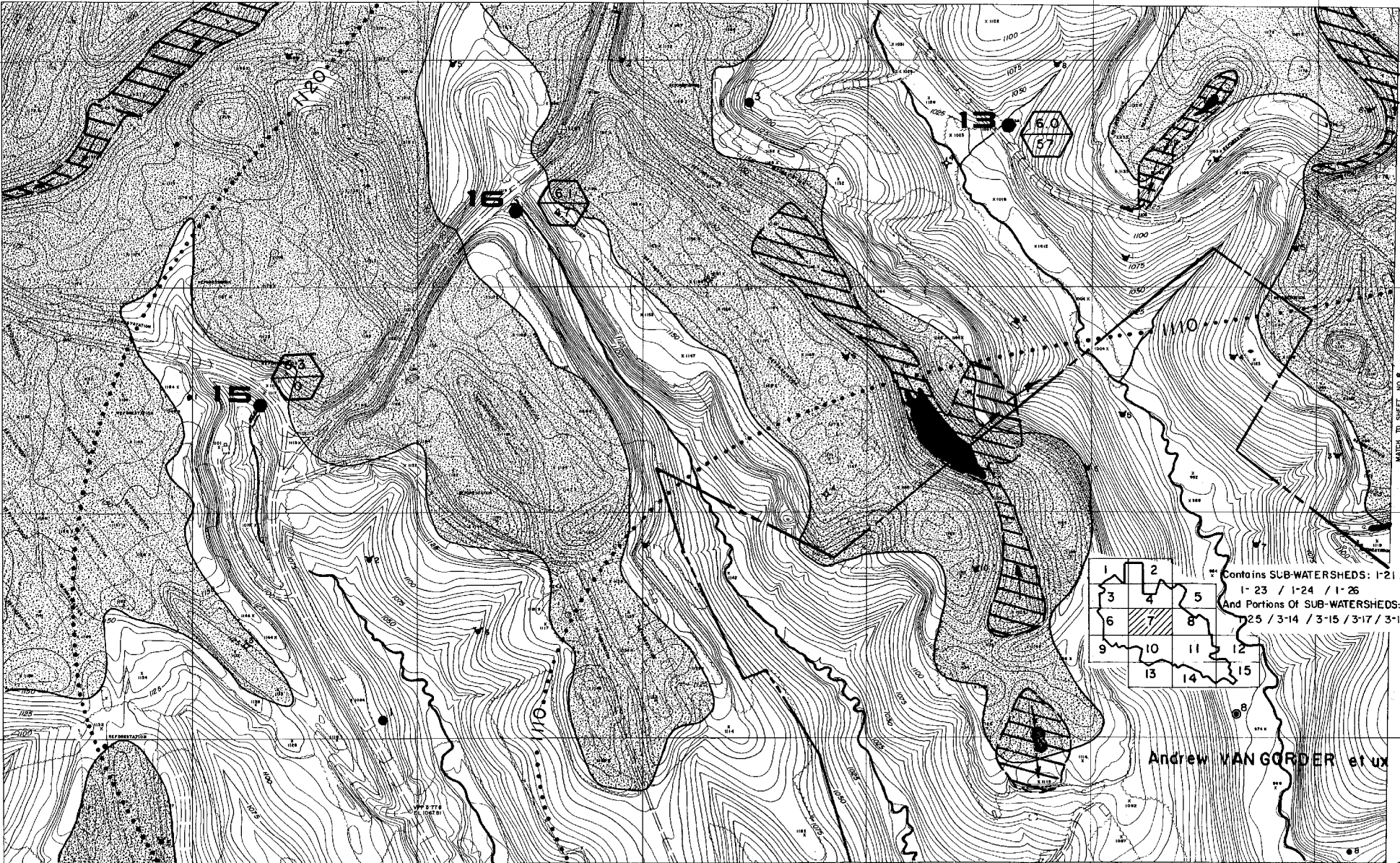
N 89,000

N 88,000

N 87,000

MATCH TO SHEET NO. 8

N 86,000



1	2	
3	4	5
6	7	8
9	10	11
	13	14
		15

Contains SUB-WATERSHEDS: 1-21 / 1-22
 1-23 / 1-24 / 1-26
 And Portions Of SUB-WATERSHEDS: 1-18
 2-5 / 3-14 / 3-15 / 3-17 / 3-18

Andrew VAN GORDER et ux

MATCH TO SHEET NO 10

SHEET 7



Contains SUB-WATERSHEDS: 3-16 / 4-10

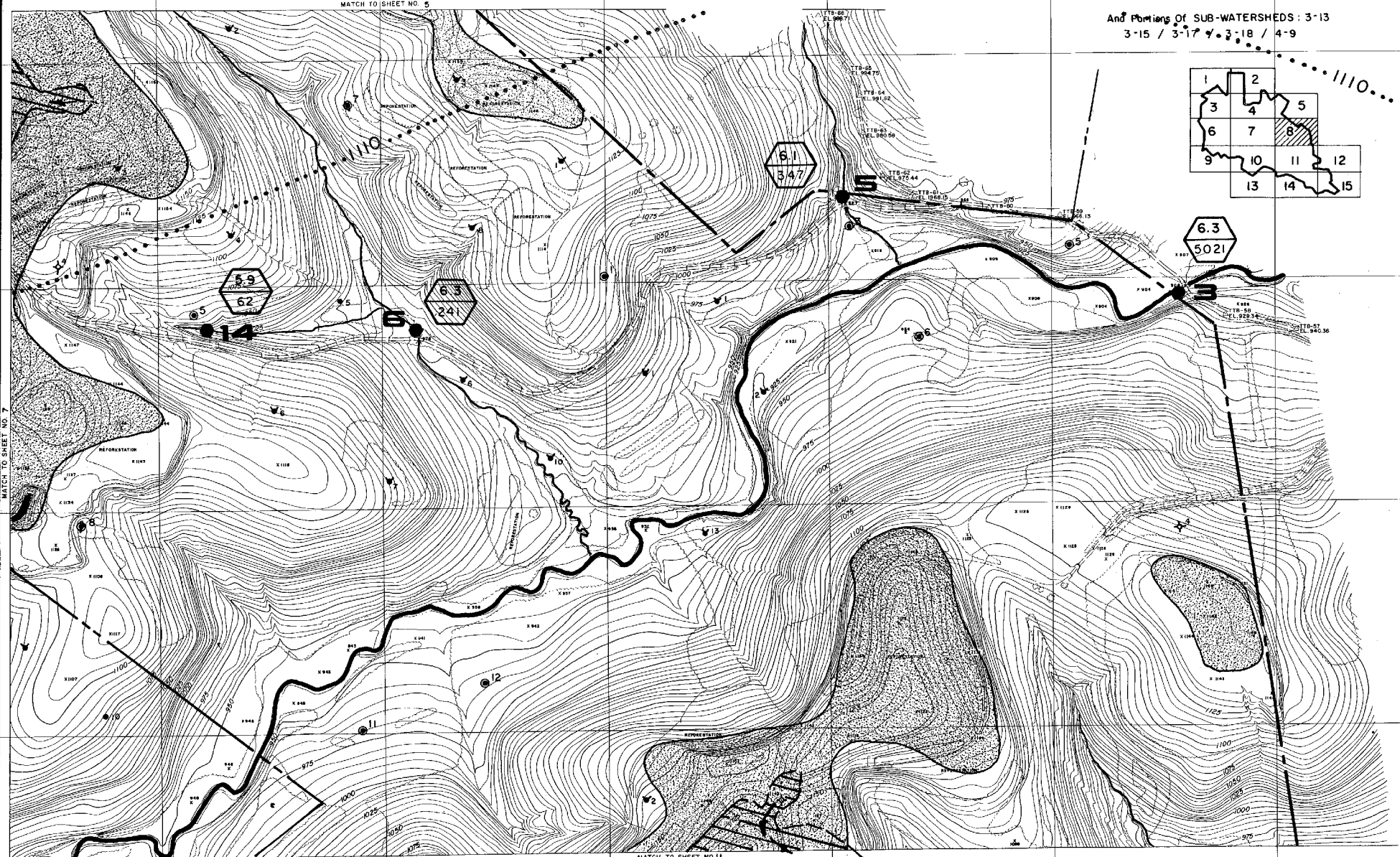
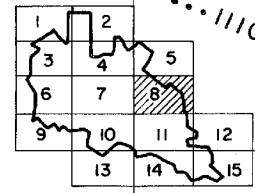
And Portions Of SUB-WATERSHEDS: 3-13
3-15 / 3-17 & 3-18 / 4-9

N 89,000

N 88,000

N 87,000

N 86,000



MATCH TO SHEET NO 5

MATCH TO SHEET NO 11

MATCH TO SHEET NO 7

E 102,000

E 103,000

E 104,000

E 105,000

E 106,000

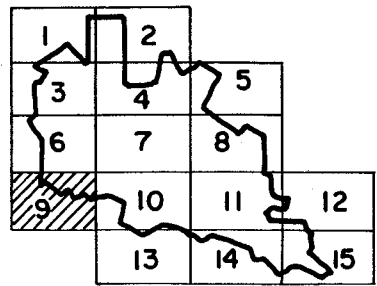
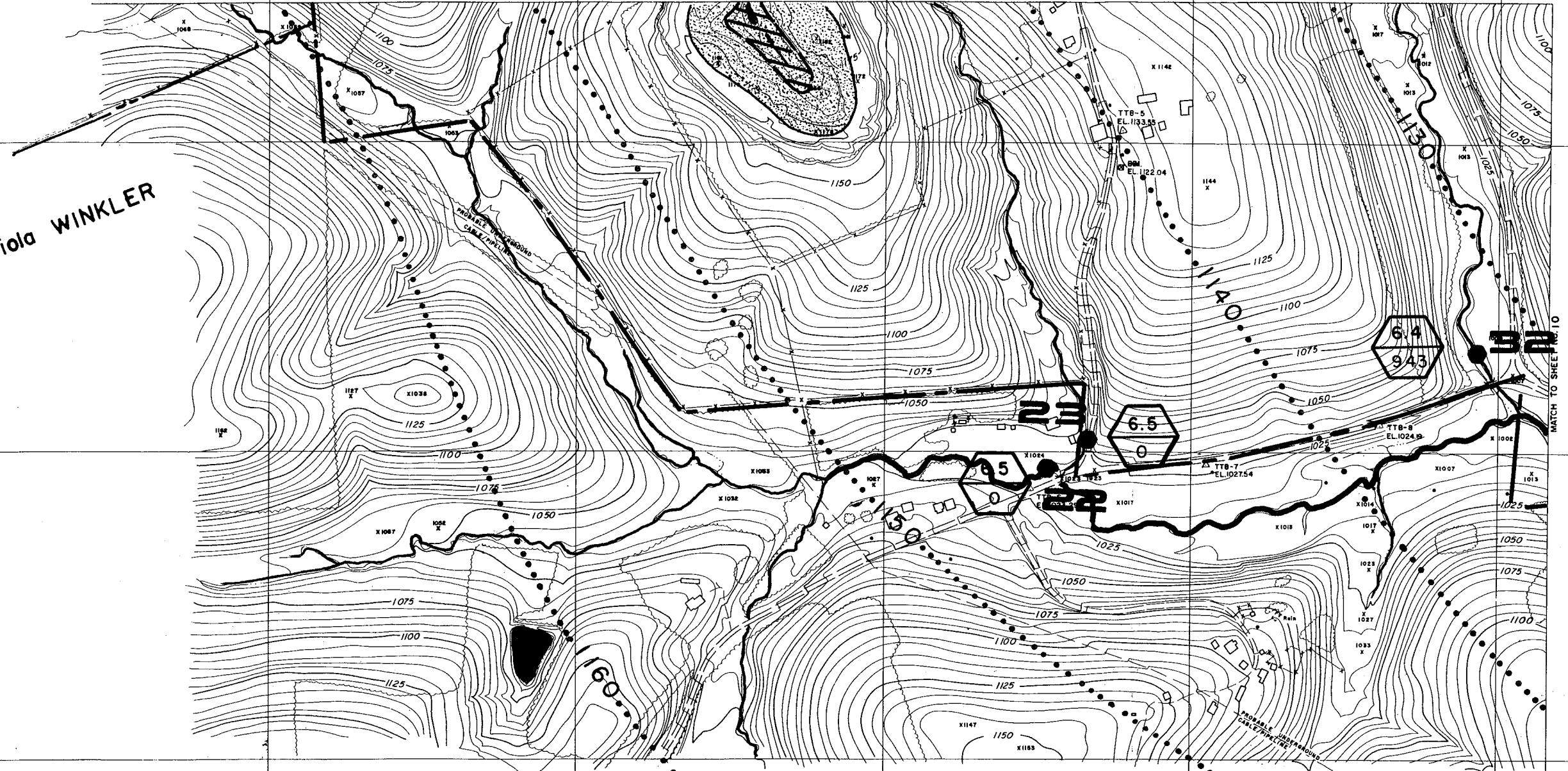
E 107,000

SHEET
8



MATCH TO SHEET NO. 6

Viola WINKLER



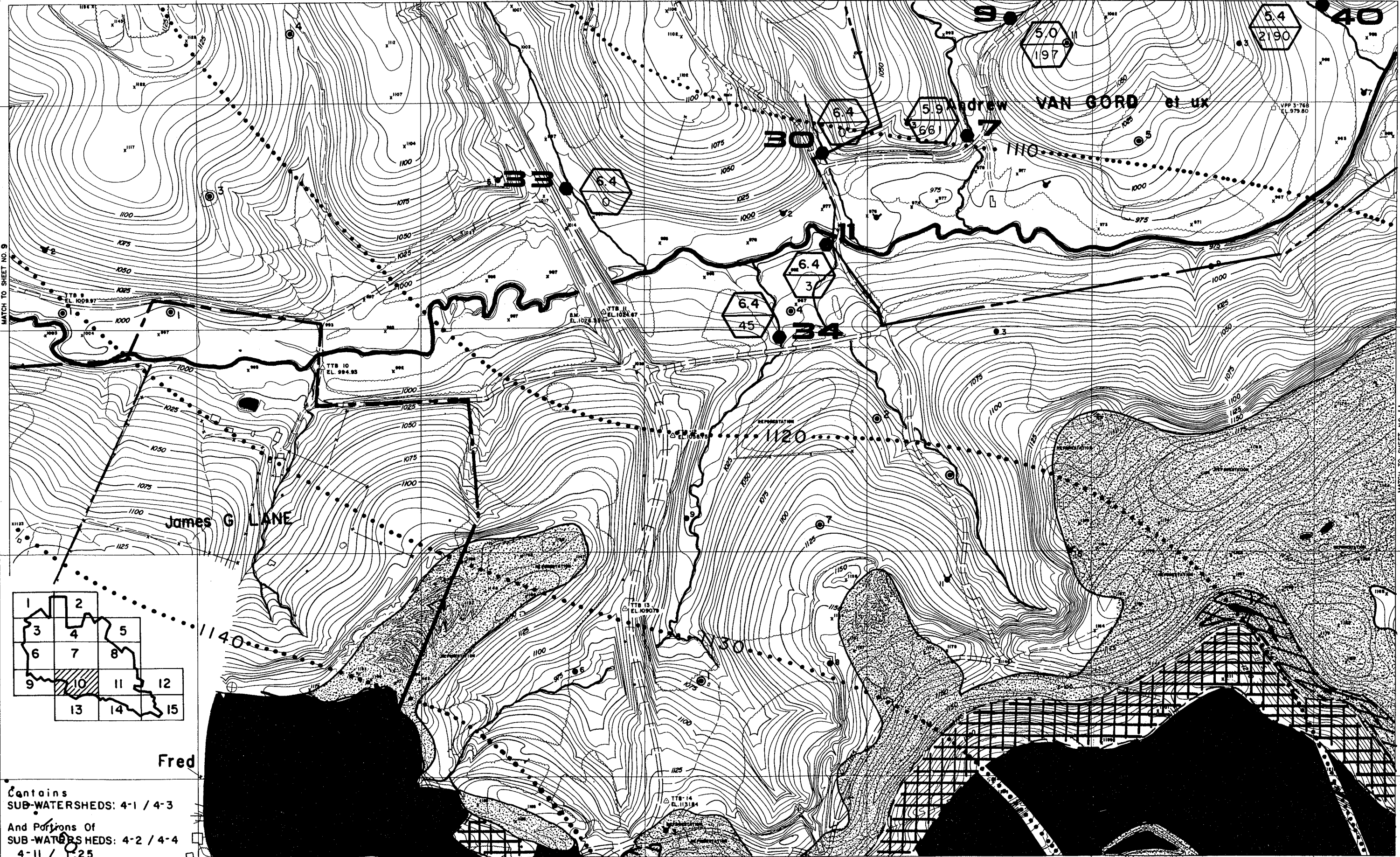
Contains Portion Of SUB-WATERSHED: 2-9

2-102



10

MATCH TO SHEET NO. 7



MATCH TO SHEET NO. 9

N 85,000

N 84,000

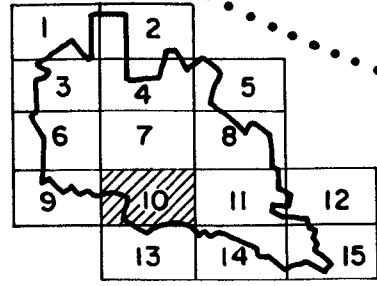
N 83,000

N 82,000

MATCH TO SHEET NO. 11

MATCH TO SHEET NO. 13

E 96,000 E 97,000 E 98,000 E 99,000 E 100,000 E 101,000

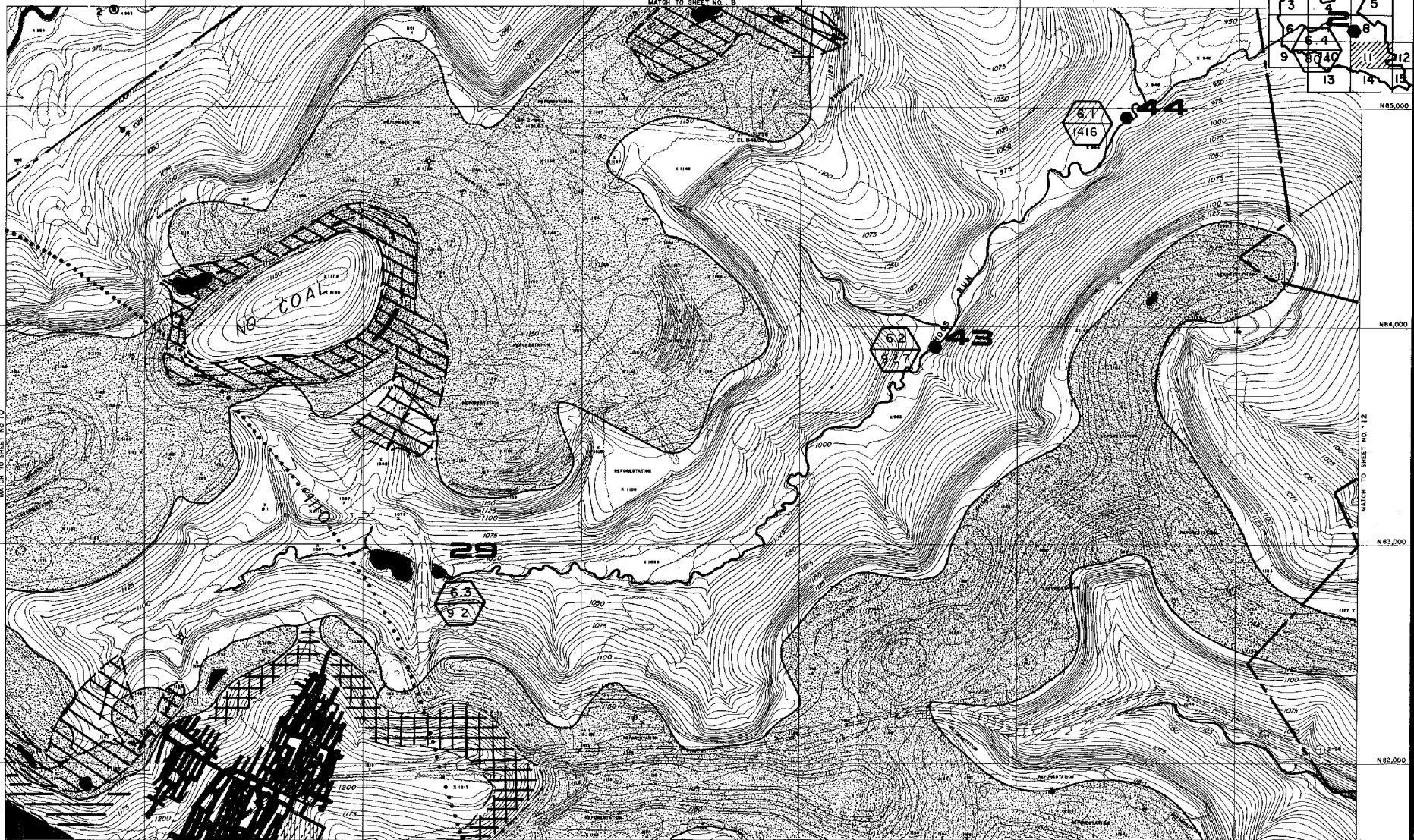
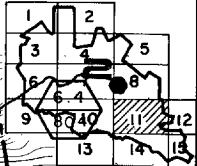


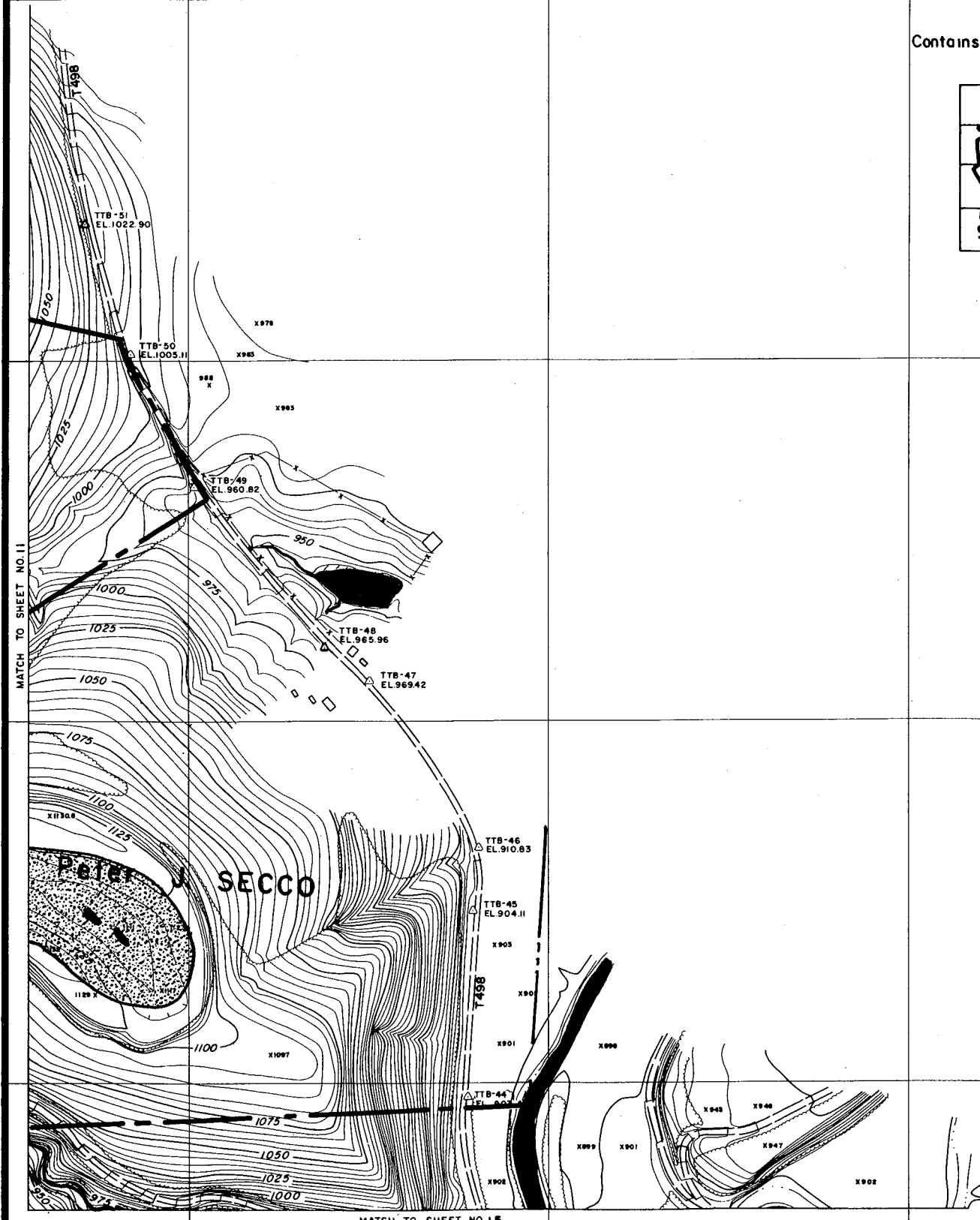
Contains
SUB-WATERSHEDS: 4-1 / 4-3
And Portions Of
SUB-WATERSHEDS: 4-2 / 4-4
4-11 / 1-25



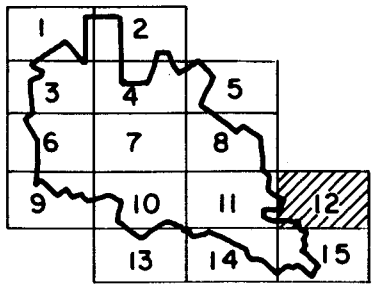
Contains SUB-WATERSHEDS: 4-5 / 4-6
4-7 / 4-8 / 4-12 / 4-20

And Portions Of SUB-WATERSHEDS: 4-4
4-9 / 4-11 / 4-13 / 4-16 / 4-21





Contains Portion Of SUB-WATERSHED: 4-21



N85,000

N84,000

N83,000

N82,000

E08,000

E09,000

E10,000

E11,000

E12,000

E13,000

⊕
2-97

MATCH TO SHEET NO 15

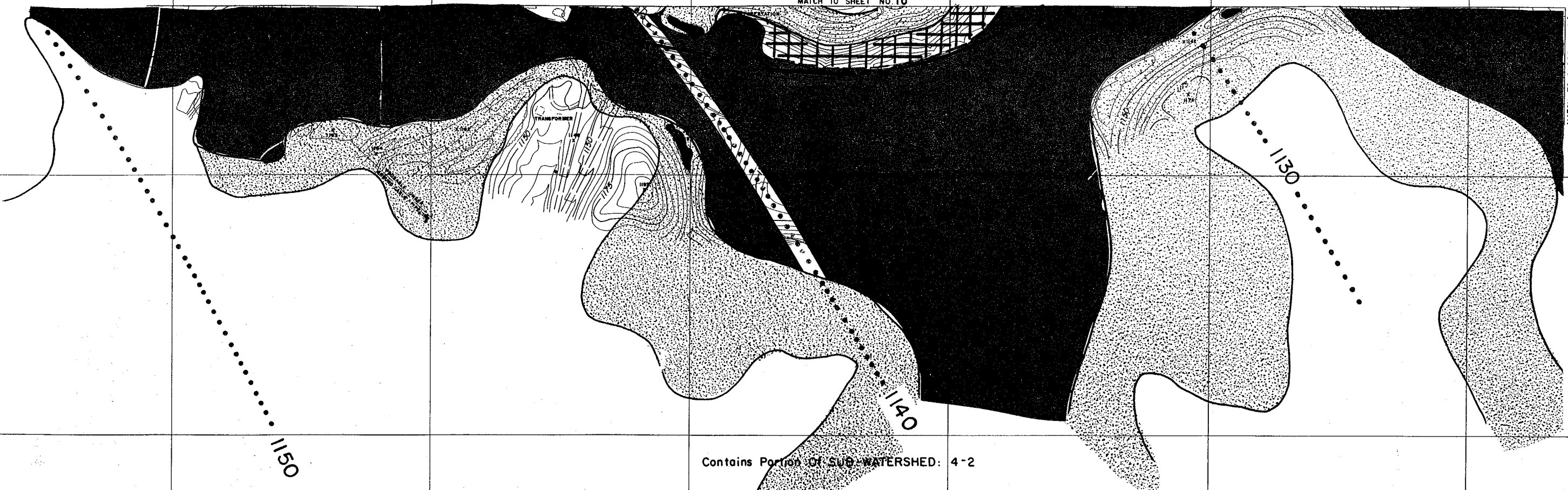
MATCH TO SHEET NO 11

SHEET
12



MATCH TO SHEET NO. 10

MATCH TO SHEET NO. 14



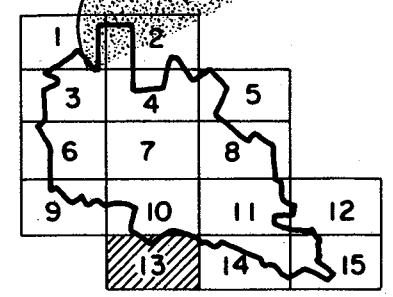
N81,000

N80,000

N79,000

N78,000

Contains Portion Of SUB-WATERSHED: 4-2



E96,000

E97,000

E98,000

E99,000

E100,000

E101,000

SHEET
13

