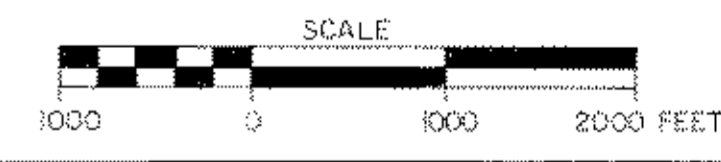


PLAN

NOTE:
U.S.G.S. DATUM APPROXIMATELY
4 FT. HIGHER THAN LANGELOTH
MINE DATUM.

- LEGEND**
- STRIP MINED AREAS (BOUNDARIES UNCERTAIN)
 - UNMINED
 - BASE OF COAL CONTOUR, ELEV. FT. (LANGELOTH MINE DATUM)
 - RAILROAD
 - STREAM
 - Y-DRIFT OR SLOPE ENTRY
 - APPROXIMATE OUTCROP OF PITTSBURGH COAL



DEPARTMENT OF ENVIRONMENTAL RESOURCES
COMMONWEALTH OF PENNSYLVANIA

E. D'APPOLONIA
CONSULTING ENGINEERS, INC.
15 DUFF ROAD MR 522E
PITTSBURGH, PA. 15235 CHESTERTON, IND. 46304

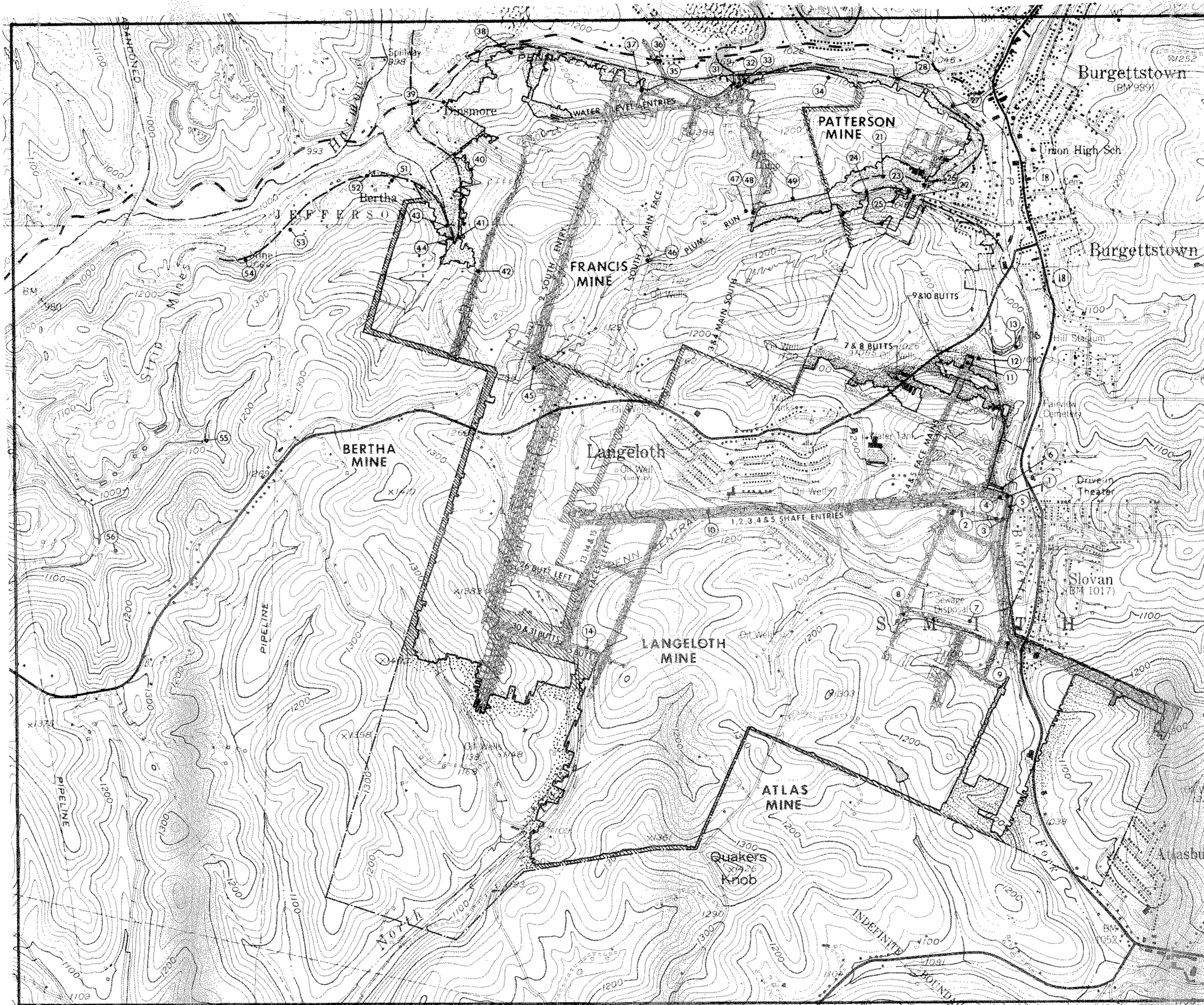
PLAN OF LANGELOTH AND FRANCIS MINES
WITH CONTOURS OF BASE OF COAL

DRAWN BY	cjb	7-19-71	DRAWING NO.
CHECKED BY	Beane	12.13.71	69-118-E 3
APPROVED BY	clap	12.13.71	

MINE MAP OF LANGELOTH MINE BY AMERICAN ZINC & CHEMICAL CO.
DATED MARCH 1921 - SCALE: 1" = 300'

REVISION	DESCRIPTION

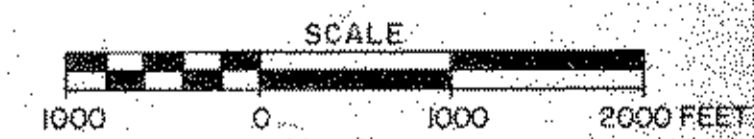
REFERENCE DRAWINGS



MINE OPENINGS ACCORDING TO ELEVATION		
ELEVATION (FEET)	LOCATION NO.	DESCRIPTION
1000	13	POLLUTED POND, RECEIVES POLLUTED SEWAGE FROM STRIPPED AREA
1012	5	SEWER PIPE DISCHARGING INTO BURGETTS FORK, MAY COME FROM LANGELOTH MINE
1016	22	ENTRY, PARTLY SEALED, POLLUTED WATER IS DISCHARGING
1017	23	COVERED MINE OPENINGS
1018	7	PUMP BOREHOLE, FLOWING, PUMP BOREHOLE #3
1020	9	BOREHOLE, NOT FLOWING, PUMP BOREHOLE #4
1020	12	CREEK NEAR TO HIGH WALL OF STRIPPED GROUND, DISAPPEARS IN DRY WEATHER
1020	21	STRIP MINING OPERATIONS, HAVE DEMATERING SYSTEM IN OPERATION
1020	26	WIRE ENTRY, MAY BE REMOVED BY STRIP MINING
1023	24	PARTLY COVERED MINE ENTRY
1025	49	STRIP MINING OPERATIONS, CONTINUATION OF WORK DESCRIBED IN LOCATION NO. 21
1030	27	OLD TIEPIT AND CRITZE, COVERED MINE ENTRIES
1034	11	THREE PIZZOMETER INSTALLATIONS
1035	3	PUMP BOREHOLE, BURIED, PUMP BOREHOLE #1
1037	1	MAIN SHAFT, CONCRETE COVERED
1037	2	AIR SHAFT, FILLED IN
1037	4	TWO PIZZOMETER INSTALLATIONS
1040	6	SLOPE ENTRY
1040	56	SEALED ENTRIES
1050	28	TWO COVERED MINE ENTRIES
1050	31	OPEN AREA, DRY
1050	32	COVERED MAIN ENTRY
1050	33	COVERED SIDE ENTRY
1050	41	FILLED IN DRIFT ENTRY, SUBSIDENCE INTO GRIFT BRIND OPENING
1050	63	FILLED IN MINE ENTRY
1050	64	FILLED IN MINE ENTRY, POND IN FRONT
1050	48	STRIPHOLE, POSSIBLE LOCATION OF MINE ENTRANCE THROUGH STAIRCASE
1050	55	PARTLY COVERED MINE ENTRIES IN STRIPPED AREA, LARGE POLLUTED DISCHARGE
1060	75	SEALED PIPE IN BOREHOLE WITH REMNANTS OF HEAT PROBE
1060	34	SUBSIDENCE WITH PIPE EMERGING
1060	35	END OF FILE DRAIN AT MINE SAGRE LOT
1060	37	SINKHOLE AND PUMP BOREHOLE #1
1060	40	MINE ENTRIES
1064	54	MINE ENTRANCE IN STRIPPED AREA
1065	36	MINE ENTRY, COVERED
1070-1090	38	RAILROAD CUT INTO MINE WORKS
1070	47	SINKHOLES AND SUBSIDENCE
1070	53	MINE ENTRANCE IN STRIPPED AREA
1071	8	PUMP BOREHOLE, NOT FLOWING, PUMP BOREHOLE #2
1090	39	COVERED ENTRY AND SUBSIDENCE
1090	42	AIR SHAFT, CONCRETE COVERED
1090	46	PUMP INSTALLATION, NOT VISIBLE
1090	51	MINE ENTRY IN STRIP MINED AREA
1090	52	MINE ENTRY IN STRIP MINED AREA
1110	15	UTILITY BOREHOLE, PLUGGED
1140	14	AIR SHAFT, CONCRETE COVERED
1160	45	PUMP AND UTILITY BOREHOLES, PLUGGED, PUMP BOREHOLE #2

LEGEND:

- BARRIER BETWEEN OR IN MINES.
- UNMINED COAL AT THE LIMIT OF MINE.
- APPROXIMATE PROPERTY LINE FOR MINES.
- APPROXIMATE OUTCROP OF PITTSBURGH COAL.



DEPARTMENT OF ENVIRONMENTAL RESOURCES
COMMONWEALTH OF PENNSYLVANIA

E. D'APPOLONIA
CONSULTING ENGINEERS, INC.
15 DUFF ROAD MR 522B
PITTSBURGH, PA. 15235 CHESTERTON, IND. 46304

PLAN AND LOCATION OF MINE OPENINGS
LANGELOTH-FRANCIS MINE COMPLEX

DRAWN BY: NCF 7-7-71 DRAWING NO.
CHECKED BY: [Signature] 69-118-E 2
APPROVED BY: [Signature]

MAP OF GREENSBURG CONNELLSVILLE COAL & COKE CO'S.
FRANCIS MINE - BURGETTSTOWN, PA. BY GEO. S. BATON & CO.
PITTSBURGH, PA. DATED MAY, 1933 - SCALE: 1" = 300'

MAP OF AMERICAN ZINC & CHEMICAL CO'S. LANGELOTH MINE -
BURGETTSTOWN, PA. BY GEO. S. BATON & CO. PITTSBURGH, PA.
DATED MARCH, 1921 - SCALE: 1" = 300'

REFERENCE DRAWINGS