

SECTION V

INVENTORY OF WATERSHED SAMPLING POINTS*

Sample Point No. 1. Stream No. 1 (0.64), latitude 41° 07' 21", longitude 079° 34' 04", is located on Licking Creek, southwest of the Borough of Callensburg, in Licking Township. Samples are collected approximately 250 feet upstream of the concrete bridge on Pennsylvania State Route No. 368 adjacent to the intersection with Legislative Route No. 16019.

Sample Point No. 2. Stream No. 1-01 (0.02), latitude 41° 07' 20", longitude 079° 33' 59", is located on Cherry Run, southwest of the Borough of Callensburg, in Licking Township. Samples are collected approximately 1/4 mile upstream of the concrete bridge on Pennsylvania State Route 368.

Sample Point No. 3. Stream No. 1 (0.80), latitude 41° 07' 21", longitude 079° 33' 56", is located on Licking Creek, southwest of the Borough of Callensburg, in Licking Township. Samples are collected approximately 0.2 miles upstream from the confluence of Cherry Run and Licking Creek.

Sample Point No. 4. Point Source No. 502, latitude 41° 06' 48", longitude 079° 33' 57", is located on a tributary to Cherry Run, south of the Borough of Callensburg, in Licking Township. Samples are collected approximately 50 feet south of the intersection of Legislative Route No. 16019 and Township Route No. 368.

Sample Point No. 5. Environmental Protection Agency Point Source No. 1227, latitude 41° 06' 31", longitude 079° 34' 09", is located on a tributary to Cherry Run, south of the Borough of Callensburg, in Licking Township. Samples are collected approximately 2,000 feet south of the intersection of Legislative Route No. 16019 and Township Route No. 368.

Sample Point No. 6. Environmental Protection Agency Point Source No. 1226, latitude 41° 06' 23", longitude 079° 34' 12", is located on a tributary to Cherry Run, south of the Borough of Callensburg, in Licking Township. Samples are collected approximately 0.5 miles south of the intersection of Legislative Route No. 16019 and Township Route No. 368.

Sample Point No. 7. Stream No. 1-01-01 (0.19), latitude 41° 16' 14", longitude 079° 34' 12", is located on a tributary to Cherry Run, south of the Borough of Callensburg, in Licking Township. Samples are collected approximately 1,000 feet north of the intersection of Township Route Nos. 368 and 341.

* See Exhibit XII

Sample Point No. 8, Stream No. 1-01 (2.00), latitude 41° 05' 56", longitude 079° 33' 53", is located on Cherry Run, south of the Borough of Callensburg, in Licking Township. Samples are collected approximately 500 feet west of the intersection of Legislative Route No. 16019 and Township Route No. 341.

Sample Point No. 9, Stream No. 1-01-07 (0.39), latitude 41° 04' 45", longitude 079° 33' 11", is located on a tributary to Cherry Run, south of the Borough of Callensburg, in Toby Township. Samples are collected approximately 100 feet downstream of a concrete bridge on Legislative Route No. 16020 adjacent to the intersection with Township Route No. 368.

Sample Point No. 10, Stream No. 1-01 (4.31), latitude 41° 04' 42", longitude 079° 32' 13", is located on Cherry Run, west of the Village of Huey, in Toby Township. Samples are collected approximately 0.4 miles west of the intersection of Legislative Route Nos. 16019 and 16021.

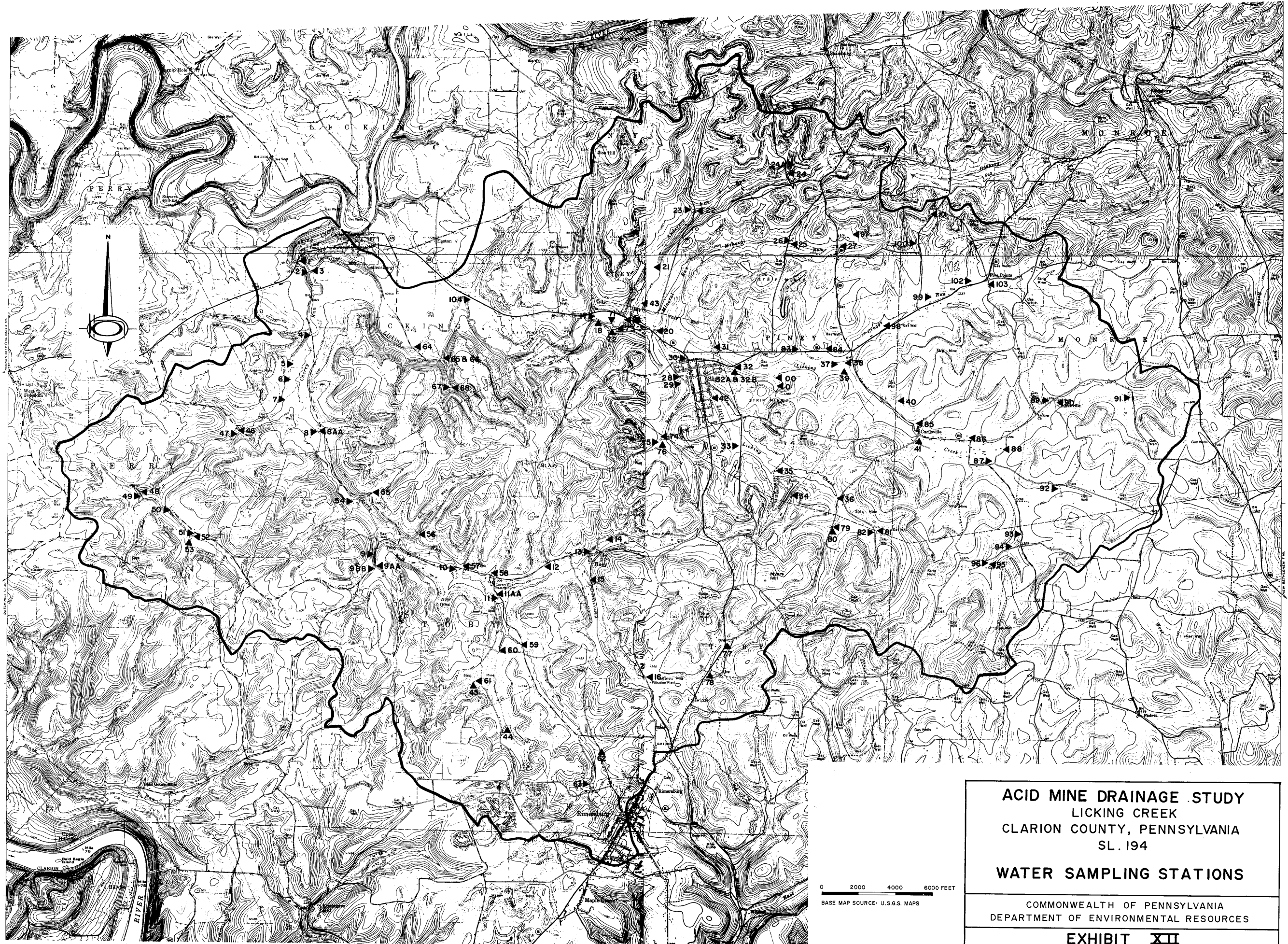
Sample Point No. 11, Stream No. 1-01 (4.96), latitude 41° 04' 27", longitude 079° 31' 44", is located on Cherry Run, west of the Village of Huey and south of the Cherry Run Campground, in Toby Township. Samples are collected approximately 1,000 feet south of the intersection of Legislative Route Nos. 16019 and 16021.

Sample Point No. 11 AA, Stream 1-01-14 (0.01), latitude 41° 04' 28", longitude 079° 31' 45", is located on a tributary to Cherry Run, west of the Village of Huey and south of the Cherry Run Campground, in Toby Township. Samples are collected approximately 1,000 feet south of the intersection of Legislative Route Nos. 16019 and 16021,

Sample Point No. 12, Stream No. 1-01-14-02 (0.09), latitude 41° 04' 44", longitude 079° 31' 11", is located on a tributary to Cherry Run, west of the Village of Huey, in Toby Township. Samples are collected approximately 0.5 miles east of the intersection of Legislative Route Nos. 16019 and 16021.

Sample Point No. 13, Stream No. 1-01-14-04 (0.19), latitude 41° 04' 51", longitude 079° 30' 39", is located on a tributary to Cherry Run, in the Village of Huey, in Toby Township. Samples are collected approximately 1 mile east of the intersection of Legislative Route Nos. 16019 and 16021.

Sample Point No. 14, Environmental Protection Agency Point Source No. 4420, latitude 41° 04' 59", longitude 079° 30' 27", is located on a tributary to Cherry Run, in the Village of Huey, in Toby Township. Samples are collected approximately 0.25 Miles north of the intersection of Legislative Route No. 16021 and Township Route No. 450.



ACID MINE DRAINAGE STUDY
LICKING CREEK
CLARION COUNTY, PENNSYLVANIA
SL. 194

WATER SAMPLING STATIONS

COMMONWEALTH OF PENNSYLVANIA
DEPARTMENT OF ENVIRONMENTAL RESOURCES

EXHIBIT XII

Sample Point No. 15, Stream No. 1-01-14 (1.21), latitude 41° 14' 34", longitude 079° 30' 37", is located on a tributary to Cherry Run, south of the Village of Huey, in Toby Township. Samples are collected approximately 0.50 miles south of the intersection of Legislative Route No. 16021 and the Sligo Branch of the Penn Central Railroad.

Sample Point No. 16, Stream No. 1-01-14 (2.31), latitude 41° 03' 45", longitude 079° 29' 53", is located on a tributary to Cherry Run, north of the Borough of Rimersburg, in Toby Township. Samples are collected approximately 1 mile north of the intersection of Pennsylvania State Route No. 68 and Township Route No. 452.

Sample Point No. 17, Stream No. 1-06 (0.00), latitude 41° 06' 56", longitude 079° 30' 35", is located on a tributary to Licking Creek, in the northwest portion of the Borough of Sligo, within Piney Township. Samples are collected approximately 300 feet south of the intersection of Pennsylvania State Route No. 368 and Township Route No. 374.

Sample Point No. 18, Stream No. 1 (5.60), latitude 41° 06' 55", longitude 079° 30' 34", is located on Licking Creek, in the northern portion of the Borough of Sligo, within Piney Township. Samples are collected approximately 300 feet south of the intersection of Pennsylvania State Route No. 368 and Township Route No. 374.

Sample Point No. 19, Stream No. 1-08 (0.12), latitude 41° 06' 55", longitude 079° 30' 15", is located on Anderson Run, in the northern portion of the Borough of Sligo, within Piney Township. Samples are collected approximately 1,700 feet west of the intersection of Pennsylvania State Route No. 368 and Legislative Route No. 16031.

Sample Point No. 20, Stream No. 1-01 (0.05), latitude 41° 06' 49", longitude 079° 29' 54", is located on Mineral Run, in the northern portion of the Borough of Sligo, within Piney Township. Samples are collected at the intersection of Pennsylvania State Route No. 368 and Legislative Route No. 16031.

Sample Point No. 21, Stream No. 1-08 (0.75), latitude 41° 07' 24", longitude 079° 29' 56", is located on Anderson Run, north of the Borough of Sligo, in Piney Township. Samples are collected north of a haul road which intersects Legislative Route No. 16031 approximately 2,000 feet north of the intersection of Pennsylvania State Route No. 368 and Legislative Route No. 16031.

Sample Point No. 22, Stream No. 1-08 (1.45), latitude 41° 07' 53", longitude 079° 29' 26", is located on Anderson Run, north of the Borough of Sligo, in Piney Township. Samples are collected approximately 1,600 feet north of the intersection of Legislative Route Nos. 16031 and 16069.

Sample Point No. 23, Stream No. 1-08-02 (0.05), latitude 41° 07' 53", longitude 079° 29' 28", is located on a tributary to Anderson Run, north of the Borough of Sligo, in Piney Township. Samples are collected approximately 200 feet west of Sample Point No. 22.

Sample Point No. 24, Stream No. 1-08 (2.45), latitude 41° 08' 13", longitude 079° 28' 23", is located on Anderson Run, north of the Borough of Sligo, in Piney Township. Samples are collected approximately 600 feet north of the intersection of Legislative Route No. 16039 and Township Route No. 428.

Sample Point No. 25, Stream No. 1-01 (1.88), latitude 41° 07' 36", longitude 079° 28' 18", is located on Mineral Run, northeast of the Borough of Sligo, in Piney Township. Samples are collected approximately 1,000 feet north of the intersection of Township Route Nos. 426 and 435.

Sample Point No. 26, Stream No. 1-01-02 (0.02), latitude 41° 07' 37", longitude 079° 28' 18", is located on a tributary to Mineral Run northeast of the Borough of Sligo, in Piney Township. Samples are collected at the same location as described in Sample Point No. 25 except that this point is 20 feet upstream of the bridge of Township Route No. 426.

Sample Point No. 27, Stream No. 1-01 (2.38), latitude 41° 07' 35", longitude 079° 27' 45", is located in Mineral Run, northeast of the Borough of Sligo, in Piney Township. Samples are collected approximately 800 feet north of the intersection of Pennsylvania State Route No. 854 and Township Route No. 435.

Sample Point No. 28, Stream No. 1-11 (0.21), latitude 41° 06' 25", longitude 079° 29' 36", is located on Little Licking Creek, in the Borough of Sligo, within Piney Township. Samples are collected approximately 3 feet downstream of the Sligo Branch, Penn Central Railroad Bridge.

Sample Point No. 29, Stream No. 1-11-01 (0.01), latitude 41° 06' 24", longitude 079° 29' 37", is located on a tributary to Little Licking Creek, in the Borough of Sligo, within Piney Township. Samples are collected 200 feet southwest of the Sligo Branch, Penn Central Railroad Bridge over Little Licking Creek.

Sample Point No. 30, Stream No. 1 (6.73), latitude 41° 06' 35", longitude 079° 29' 31", is located on Licking Creek, in the Borough of Sligo, within Piney Township. Samples are collected approximately 50 feet downstream of Pennsylvania State Route No. 368 concrete bridge.

Sample Point No. 31, Stream No. 1-12 (0.07), latitude 41° 06' 38", longitude 079° 29' 13", is located on an unnamed tributary to Licking Creek in Piney Township, just outside the Borough of Sligo. Samples are taken approximately 65 feet upstream of the concrete bridge on Pennsylvania State Route No. 368 over Licking Creek.

Sample Point No. 32. Stream No. 1 (7.21) latitude 41° 06' 30", longitude 079° 28' 58", is located on Licking Creek in Piney Township. Samples are taken approximately 65 feet upstream of the concrete bridge on Pennsylvania State Route No. 368 over Licking Creek.

Sample Point No. 33. Stream No. 1-11 (1.21), latitude 41° 05' 48", longitude 079° 28' 53", is located on Little Licking Creek in Piney Township. Samples are collected approximately 0.3 mile south of the intersection of Legislative Route No. 16022 and Township Route No. 442.

Sample Point No. 34. Environmental Protection Agency Point Source No. 4485, latitude 41° 05' 22", longitude 079° 28' 15", forms an unnamed tributary to Little Licking Creek in Piney Township. Samples are taken east of the haul road near the base of the spoil pile.

Sample Point No. 35. Stream No. 1-11 (1.64), latitude 41° 05' 35", longitude 079° 28' 28", is located on Little Licking Creek in Piney Township. Samples are taken 5 feet upstream of the wooden bridge on Township Route No. 448, approximately 1/2 mile from the intersection of Legislative Route No. 16022 and Township Route No. 448.

Sample Point No. 36. Stream No. 1-11 (2.51), latitude 41° 05' 20", longitude 079° 27' 44", is located on Little Licking Creek in Piney Township. Samples are taken 200 feet southwest of the intersection of Legislative Route No. 16023 and Township Route No. 441.

Sample Point No. 37. Stream No. 1 (8.33), latitude 41° 06' 49", longitude 079° 29' 54". is located on Licking Creek in the eastern portion of Piney Township. Samples are collected 50 feet downstream from the mouth of Craggs Run.

Sample Point No. 38. Stream No. 1-18 (0.00), latitude 41° 06' 32", longitude 079° 27' 43", is located on Craggs Run in the eastern portion of Piney Township. Samples are collected 100 feet upstream of the confluence of Craggs Run and Licking Creek.

Sample Point No. 39. Stream No. 1 (8.38), latitude 41° 06' 31", longitude 079° 27' 43", is located on Licking Creek in the eastern portion of Piney Township. Samples are collected 150 feet upstream from the confluence of Licking Creek and Craggs Run.

Sample Point No. 40. Stream No. 1-20, latitude 41° 06' 12", longitude 079° 27' 03", is located on an unnamed tributary to Licking Creek in Piney Township. Samples are collected approximately 500 feet north of the intersection of Pennsylvania State Route No. 854 and Township Route No. 648.

Sample Point No. 41, Stream No. 1 (9.50), latitude 41° 05' 58", Longitude 079° 26' 47", is located on the main stem of Licking Creek in the Village of Curllsville, Monroe Township. Samples are collected 100 feet south of the intersection of Pennsylvania State Route No. 854 and Legislative Route No. 16022.

Sample Point No. 42, Environmental Protection Agency Point Source No. 4491, latitude 41° 06' 13", longitude 079° 29' 15", is located adjacent to Little Licking Creek in Sligo Borough. Samples are taken 500 feet east of Pennsylvania State Route No. 68 in Sligo at a gas well.

TABLE 5-1
HIGH AND LOW FLOW RECORDED AT
MAIN SAMPLE POINTS

Point #	Stream	Location	High Flow	Date	Low Flow	Date
1	1	1 (0.64)	224.81 cfs	5/13/74	15.10 cfs	8/20/74
2	1-01	1-01 (0.02)	84.83 cfs	5/13/74	5.64 cfs	9/27/74
3	1	1 (0.80)	139.98 cfs	5/23/74	9.84 cfs	6/11/74
19	1-08	1-08 (0.12)	10.00 cfs	11/1/73	0.60 cfs	7/18/74
20	1-10	1-10 (0.05)	8.14 cfs	11/28/73	0.55 cfs	9/12/73
28	1-11	1-11 (0.21)	14.79 cfs	3/30/74	1.58 cfs	8/09/73
11AA	1-01-14	1-01-14 (0.01)	17.02 cfs	5/15/74	1.19 cfs	8/20/74