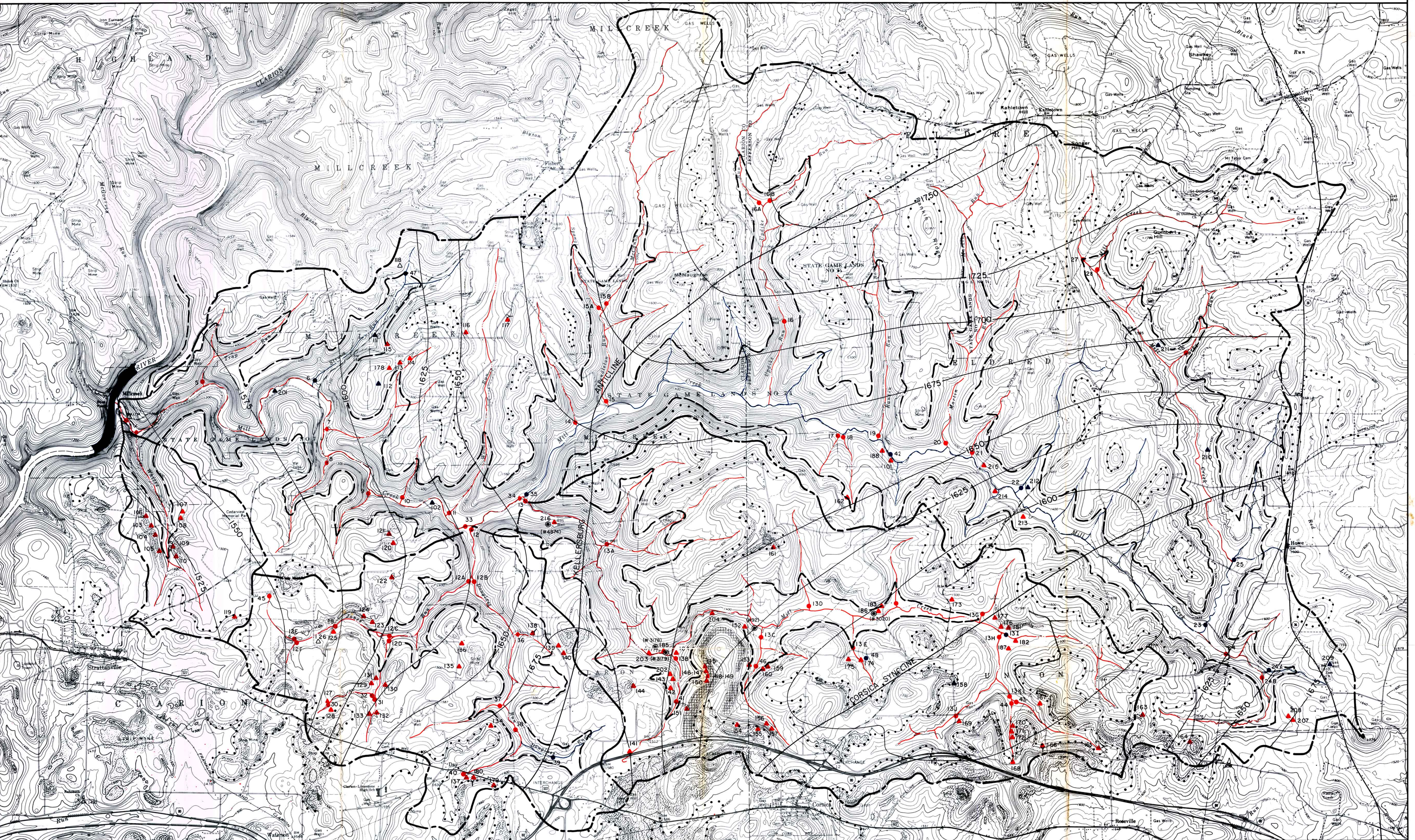
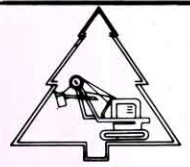


MILL CREEK WATERSHED

CLARION COUNTY, JEFFERSON COUNTY PENNSYLVANIA



LEGEND

- WATERSHED BOUNDARY
- SURFACE CONTOURS
- STATE GAME LANDS
- BROOKVILLE COAL OUTCROP
- LOWER KITTANNING COAL OUTCROP
- 1700 STRUCTURE CONTOURS ON LOWER KITTANNING COAL
- GAS WELL SEALED UNDER D.E.R. PROJECT NO. SL 133-1
- DEPARTMENT OF ENVIRONMENTAL RESOURCES RECLAMATION PROJECT NO. SL 133-4-101.1
- STREAM SAMPLING STATION
- △ MINE DRAINAGE DISCHARGE
- STREAMS
- PH 0-3.9
- PH 4.0-5.9
- PH 6.0-14.0

COMMONWEALTH OF PENNSYLVANIA
DEPARTMENT OF ENVIRONMENTAL RESOURCES
MINE DRAINAGE PROJECT SL 133-5

