

GENERAL ANALYTICS, INC.

PLATES

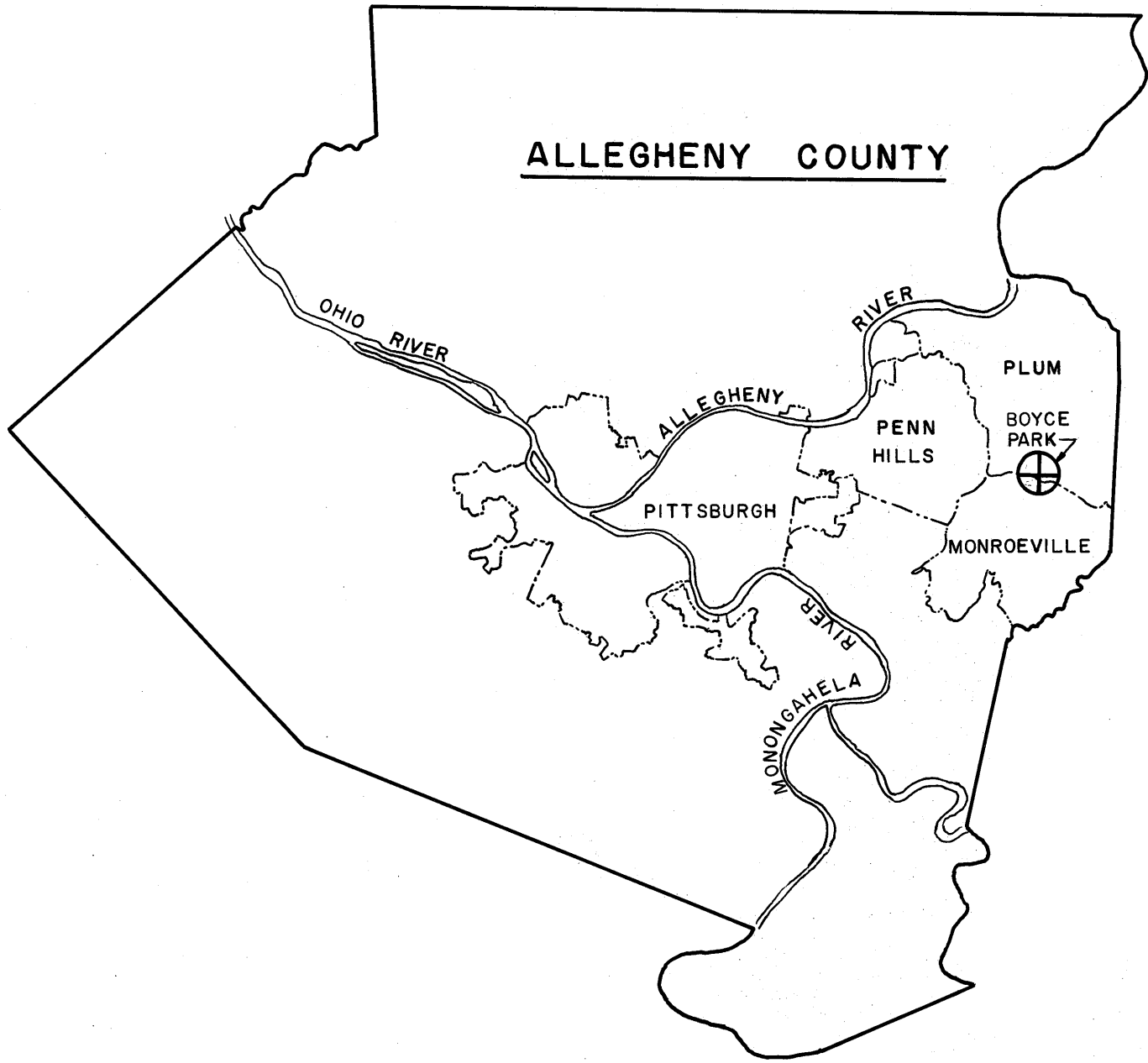
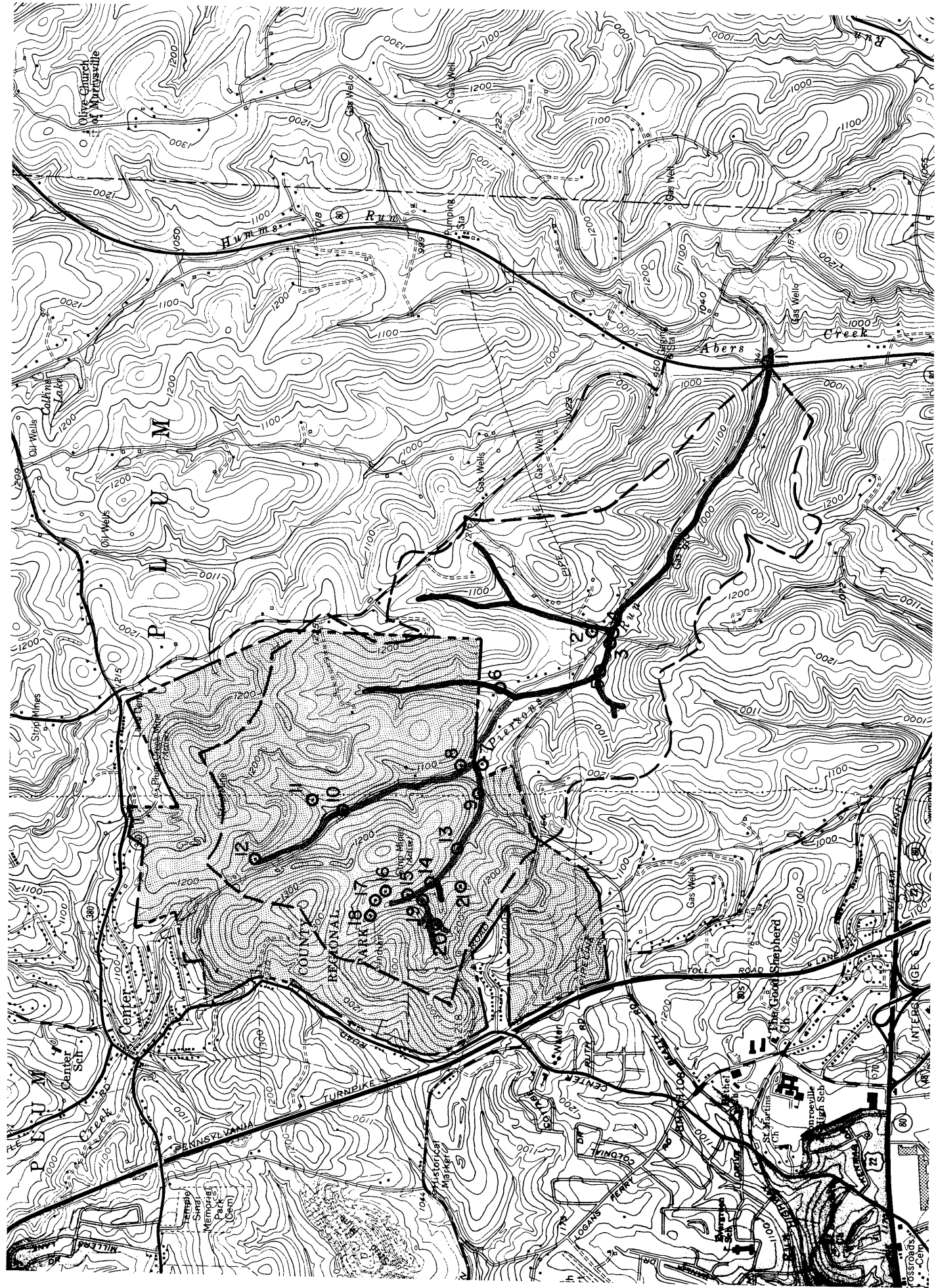


PLATE I
LOCATION MAP

A B C D E F G H I J K L M N O P Q

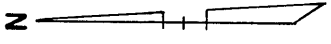
1 2 3 4 5 6 7 8 9 10



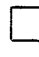
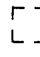















LEGEND

- BOYCE PARK BOUNDARY
- LIMIT OF WATERSHED
- SAMPLE LOCATIONS
- PREDOMINANTLY ACID FLOW
- PREDOMINANTLY ALKALINE FLOW
- VARIABLE ACID-ALKALINE FLOW

PLATE 2
PIERSONS RUN WATERSHED




LEGEND

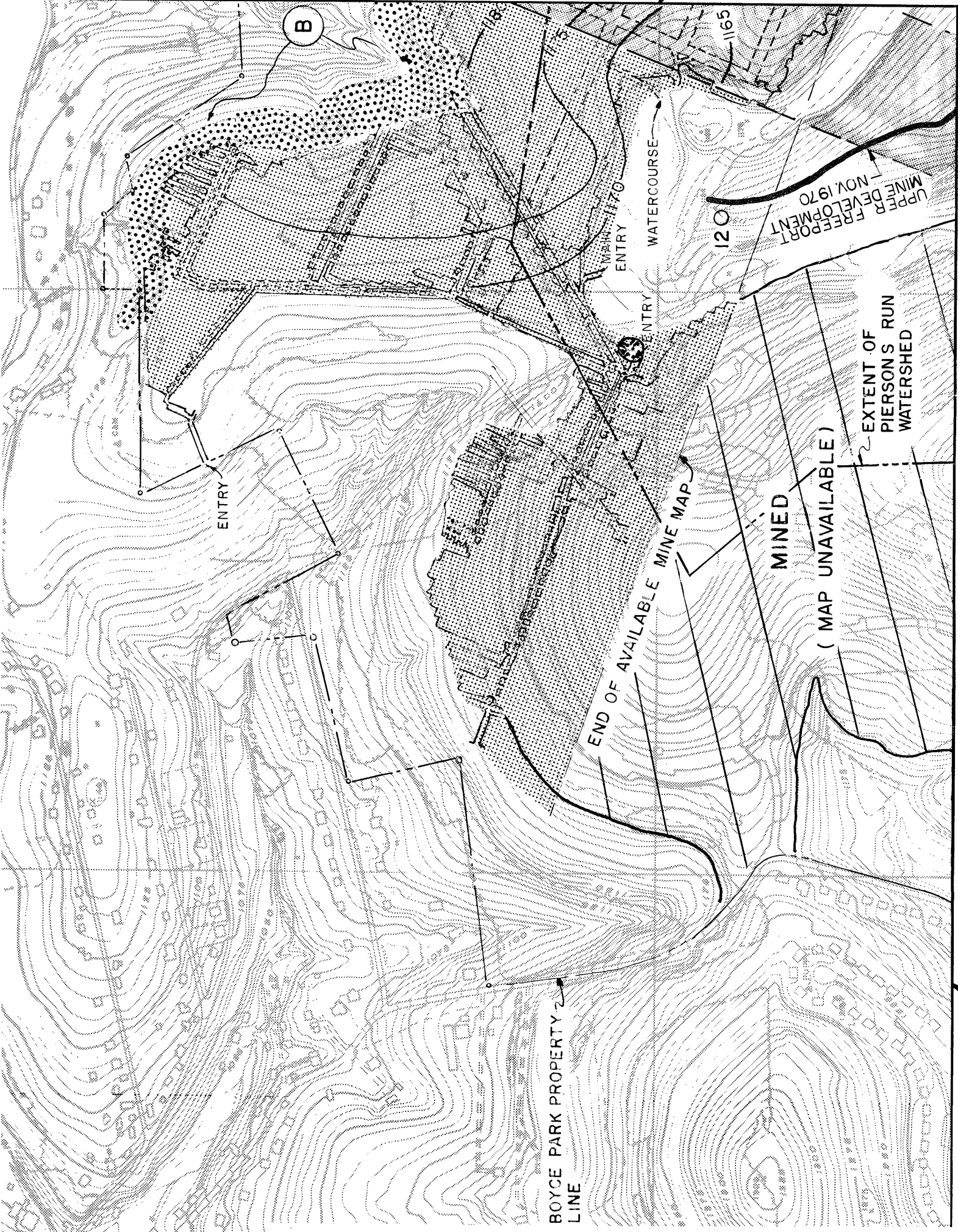
-  STRIP MINES AND ASSOCIATED AREAS GRADED TO DRAIN AWAY FROM THE DEEP MINE.
-  APPROXIMATE LIMIT OF STRIP MINES AND ASSOCIATED AREAS REGRADED TO NATURAL CONTOURS.
-  STRIP MINES AND ASSOCIATED AREAS GRADED TO DRAIN TOWARD THE DEEP MINE.
-  UPPER FREEPORT MINE DEVELOPMENT - NOV. 1970
-  DEEP MINE AREA DETAIL MINING MAPS AVAILABLE.
-  MINED (MAP UNAVAILABLE).
-  PREDOMINANTLY ACID FLOW
-  PREDOMINANTLY ALKALINE FLOW
-  VARIABLE ACID - ALKALINE FLOW
-  SAMPLE POINT.
-  SINKHOLE.
-  EXISTING GROUND SURFACE CONTOURS.
-  BASE OF COAL CONTOURS.
-  BOYCE PARK PROPERTY LINE.
-  CONSOLIDATION COAL CO. PROPERTY LINE (UPPER FREEPORT COAL SEAM ONLY).
-  AREA OF SPECIAL CONSIDERATION.
-  EXTENT OF PIERSONS RUN WATERSHED.

REFERENCE DRAWINGS:

MINE MAPS - BOYCE PARK
PITTSBURGH CONSOLIDATION COAL CO.
PLUM CREEK MINE
TRACING A-682-014 EAST
A-621-014 WEST

INDEX

	2
3	4
5	6



MATCH LINE DWG. 69-209-B3

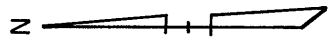
GENERAL ANALYTICS, INC.
CONSULTING ENGINEERS
MONROEVILLE, PENNSYLVANIA

COMMONWEALTH OF PENNSYLVANIA
DEPARTMENT OF ENVIRONMENTAL RESOURCES
CONTRACT NO. SL-157

LOCATION MAP SHEET I
MINE DRAINAGE ABATEMENT SURVEY
PIERSONS RUN WATERSHED
ALLEGHENY COUNTY, PENNSYLVANIA

DWN. BY	FAF	8-16-71	SCALE 1" = 400'
CKD. BY	CRR	8-16-71	DRAWING NO.
APPR'D.	REG	8-16-71	69-209-BI

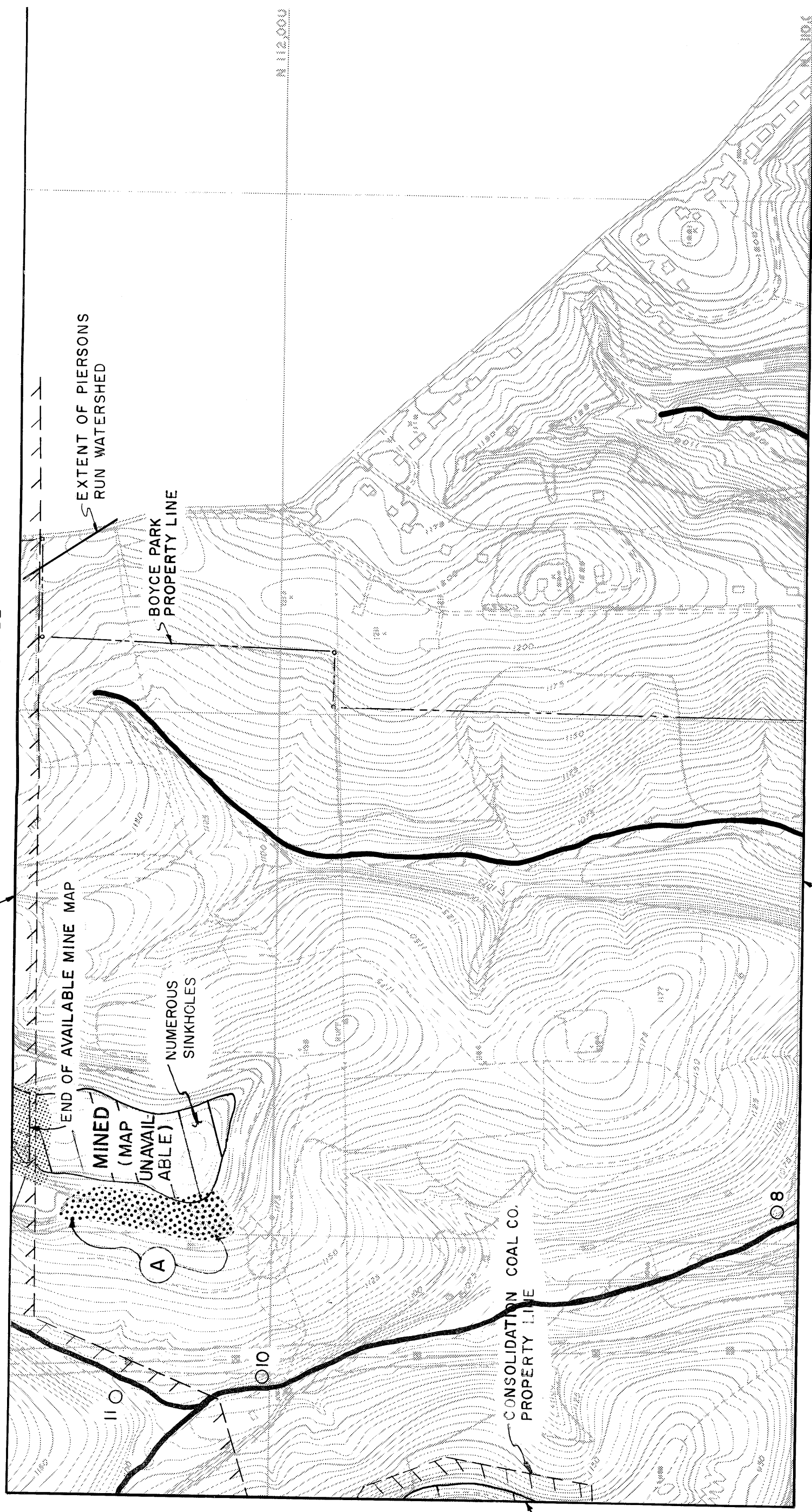
MATCH LINE DWG. 69-209-B2



MATCH LINE DWG. 69-209-B3

MATCH LINE DWG. 69-209-B2

MATCH LINE DWG. 69-209-B6



REFERENCE DRAWINGS:

MINE MAPS - BOYCE PARK
 PITTSBURGH CONSOLIDATION COAL CO.
 PLUM CREEK MINE
 TRACING A-682-014 EAST
 A-621-014 WEST

INDEX

1	2
3	4
5	6

NOTE:
 FOR LEGEND SEE DWG.
 69-209-B1

GENERAL ANALYTICS, INC.
 CONSULTING ENGINEERS
 MONROEVILLE, PENNSYLVANIA

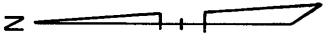
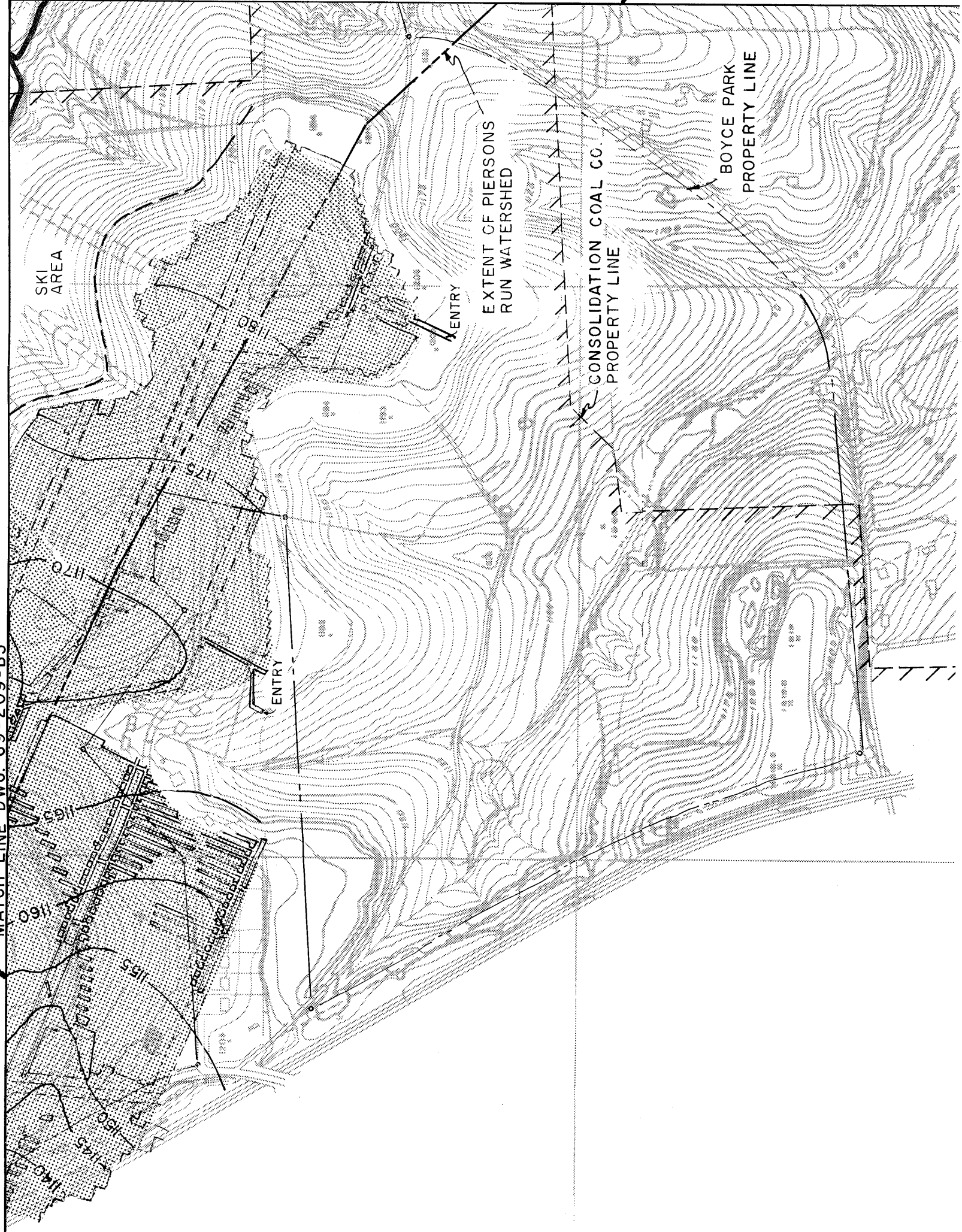
COMMONWEALTH OF PENNSYLVANIA
 DEPARTMENT OF ENVIRONMENTAL RESOURCES
 CONTRACT NO. SL-157

LOCATION MAP SHEET 4
 MINE DRAINAGE ABATEMENT SURVEY
 PIERSONS RUN WATERSHED
 ALLEGHENY COUNTY, PENNSYLVANIA

DWN. BY	FAF	8-16-71	SCALE 1" = 400'
CKD. BY	CRR	8-16-71	DRAWING NO.
APPR'D.	REG	8-16-71	69-209-B4

MATCH LINE DWG. 69-209-B3

MATCH LINE DWG. 69-209-B6



REFERENCE DRAWINGS:
 MINE MAPS- BOYCE PARK
 PITTSBURGH CONSOLIDATION COAL CO.
 PLUM CREEK MINE
 TRACING A-682-014 EAST
 A-621-014 WEST

INDEX

1	2
3	4
5	6

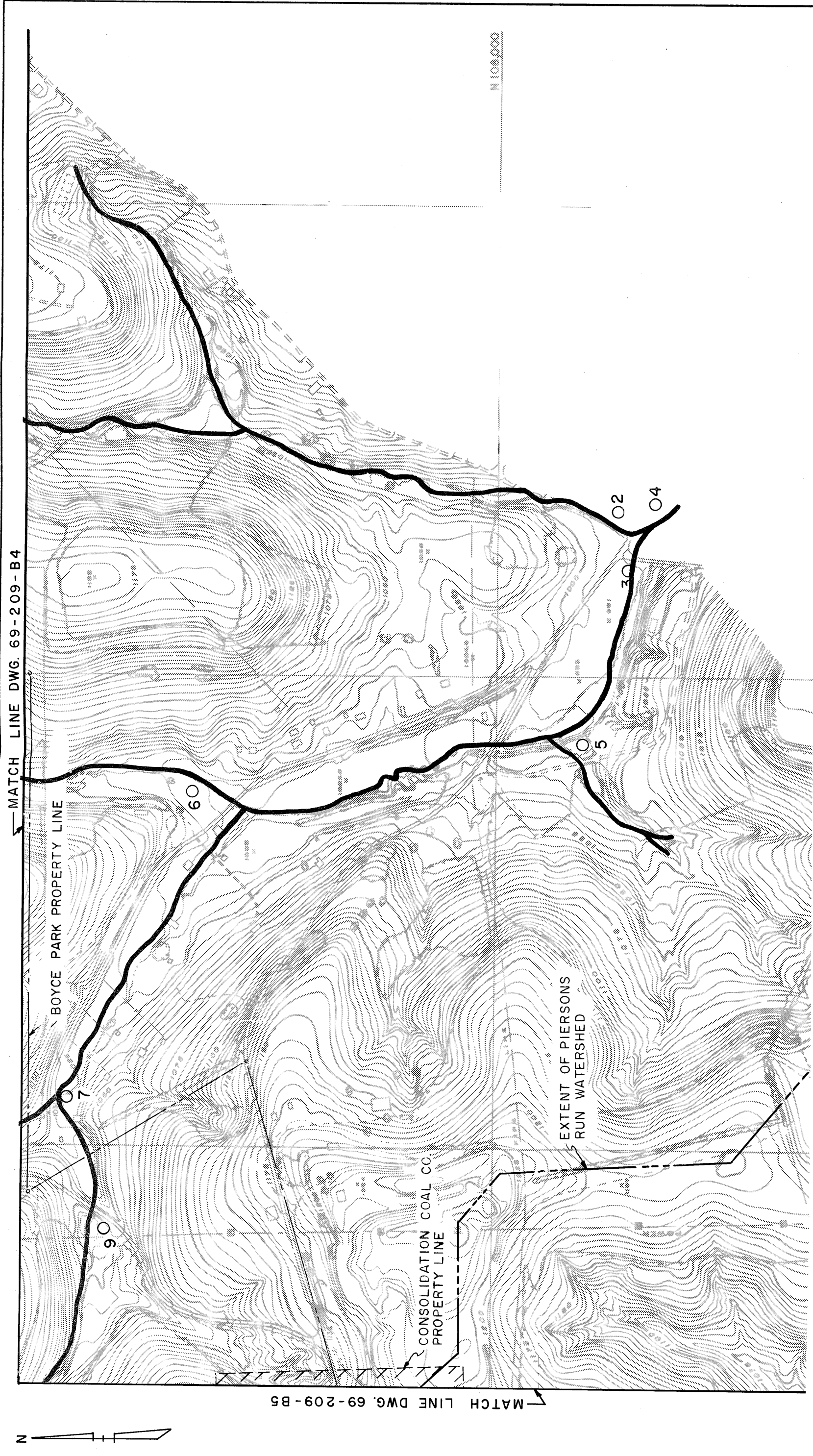
NOTE:
 FOR LEGEND SEE DWG.
 69-209-B1

GENERAL ANALYTICS, INC.
 CONSULTING ENGINEERS
 MONROEVILLE, PENNSYLVANIA

COMMONWEALTH OF PENNSYLVANIA
 DEPARTMENT OF ENVIRONMENTAL RESOURCES
 CONTRACT NO. SL-157

LOCATION MAP SHEET 5
 MINE DRAINAGE ABATEMENT SURVEY
 PIERSONS RUN WATERSHED
 ALLEGHENY COUNTY, PENNSYLVANIA

DWN. BY	FAF	8-16-71	SCALE 1" = 400'
CKD. BY	CRR	8-16-71	DRAWING NO.
APPR'D.	REG	8-16-71	69-209-B5



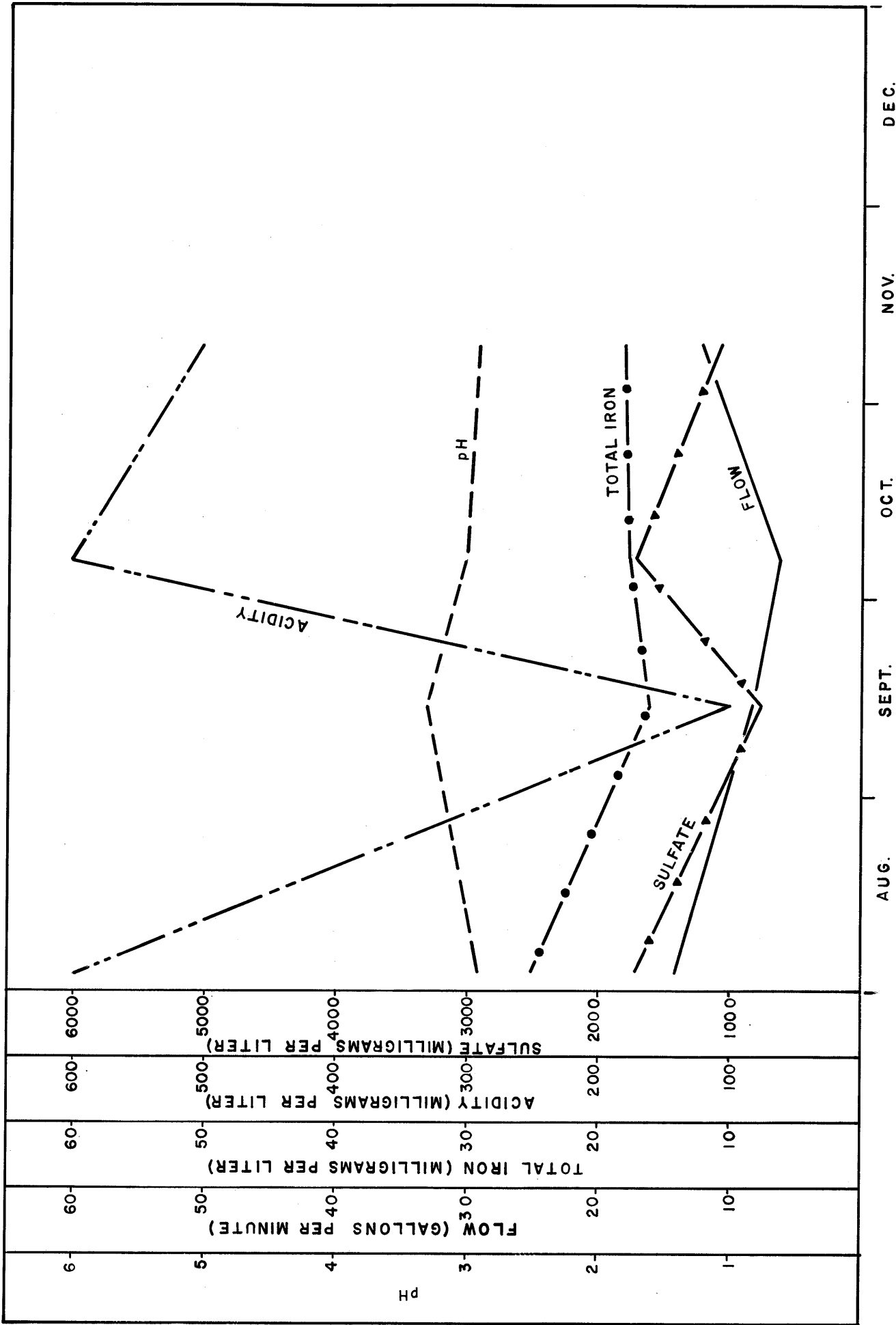
REFERENCE DRAWINGS:
 MINE MAPS - BOYCE PARK
 PITTSBURGH CONSOLIDATION COAL CO.
 PLUM CREEK MINE
 TRACING A-682-014 EAST
 A-621-014 WEST

INDEX

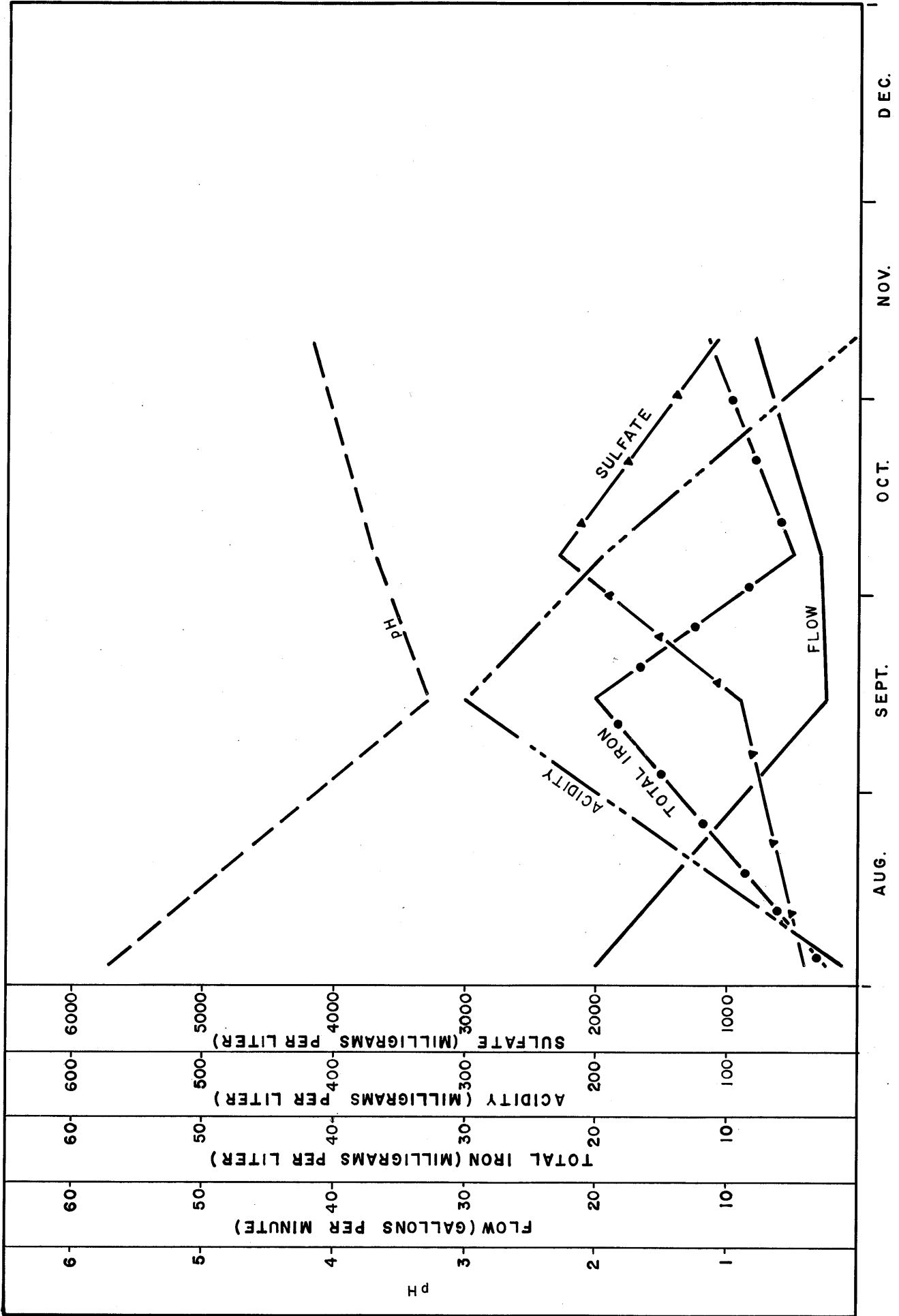
1	2
3	4
5	6

NOTE:
 FOR LEGEND SEE DWG.
 69-209-B1

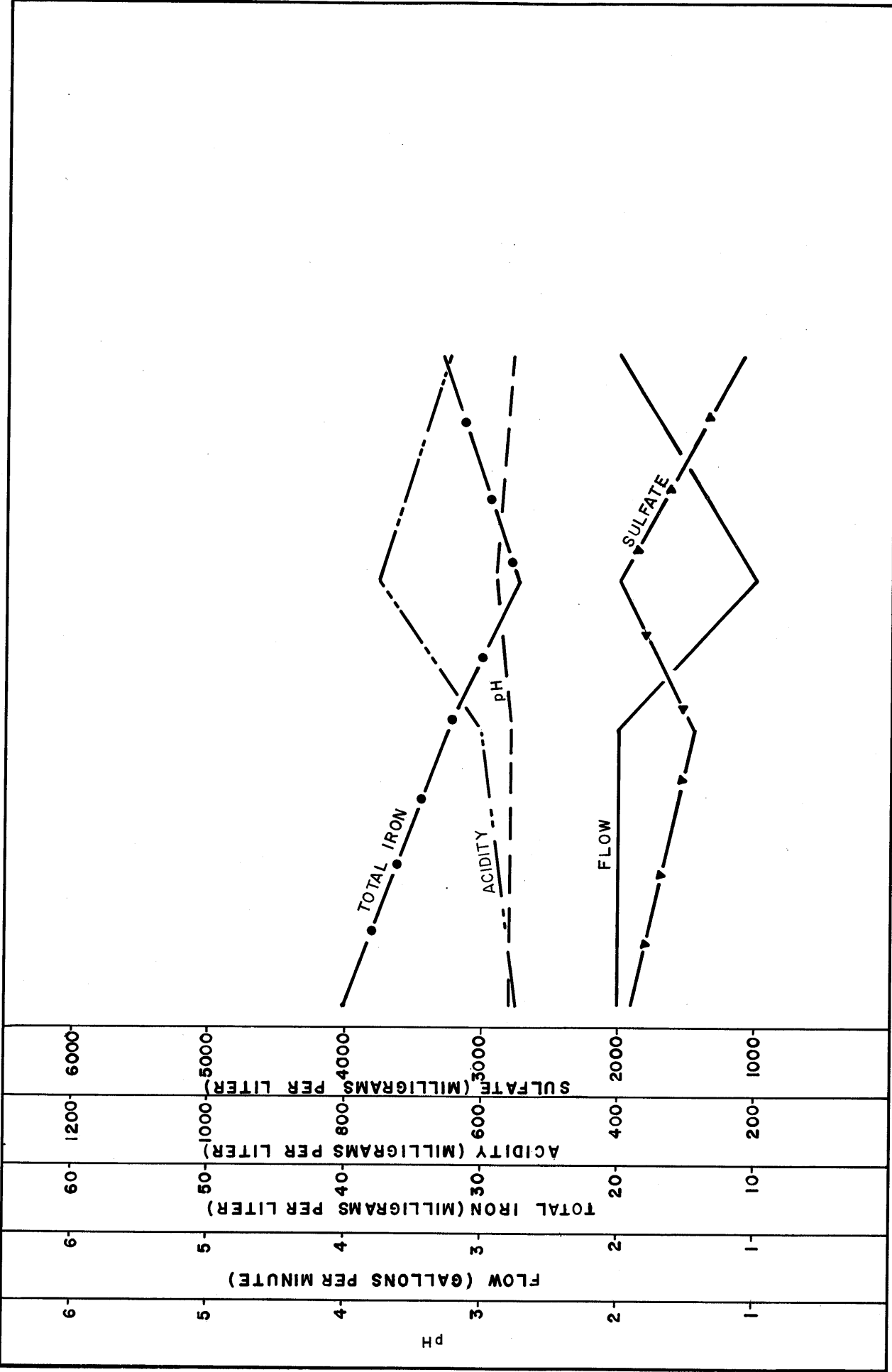
GENERAL ANALYTICS, INC. CONSULTING ENGINEERS MONROEVILLE, PENNSYLVANIA		LOCATION MAP SHEET 6 MINE DRAINAGE ABATEMENT SURVEY PIERSONS RUN WATERSHED ALLEGHENY COUNTY PENNSYLVANIA	
COMMONWEALTH OF PENNSYLVANIA DEPARTMENT OF ENVIRONMENTAL RESOURCES CONTRACT NO. SL-157		DWN. BY	FAF
		CKD. BY	CRR
		APPR'D.	REG
		8-16-71	8-16-71
		8-16-71	8-16-71
		8-16-71	8-16-71
		SCALE 1" = 400'	DRAWING NO. 69-209-B6



WATER QUALITY CHART
SAMPLE POINT 18



WATER QUALITY CHART
SAMPLE POINT 19



WATER QUALITY CHART
SAMPLE POINT 20